

PokéDolls

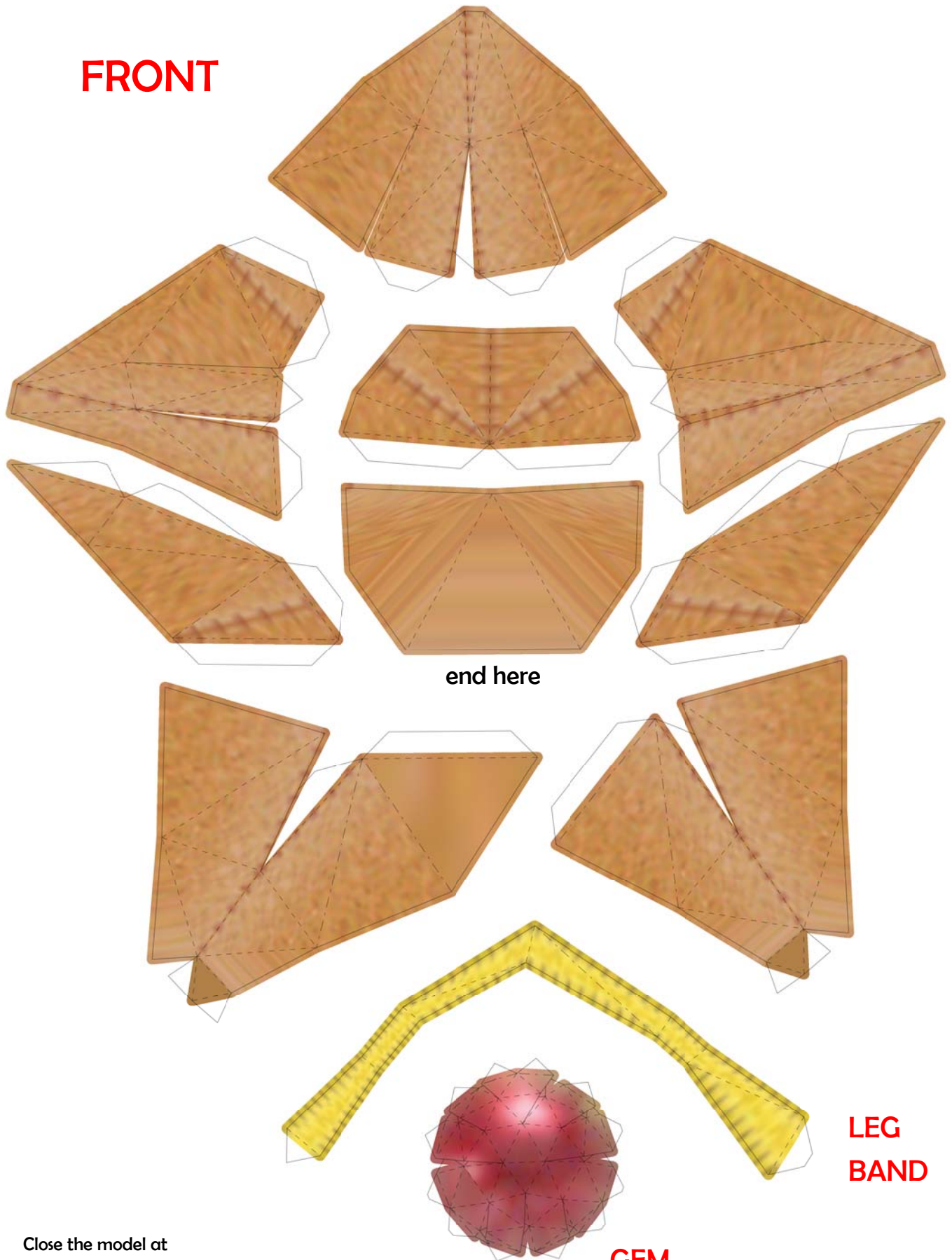


Staryu

by PMF and Paperbuff

Paper Pokés
paperpokes.blogspot.com

FRONT



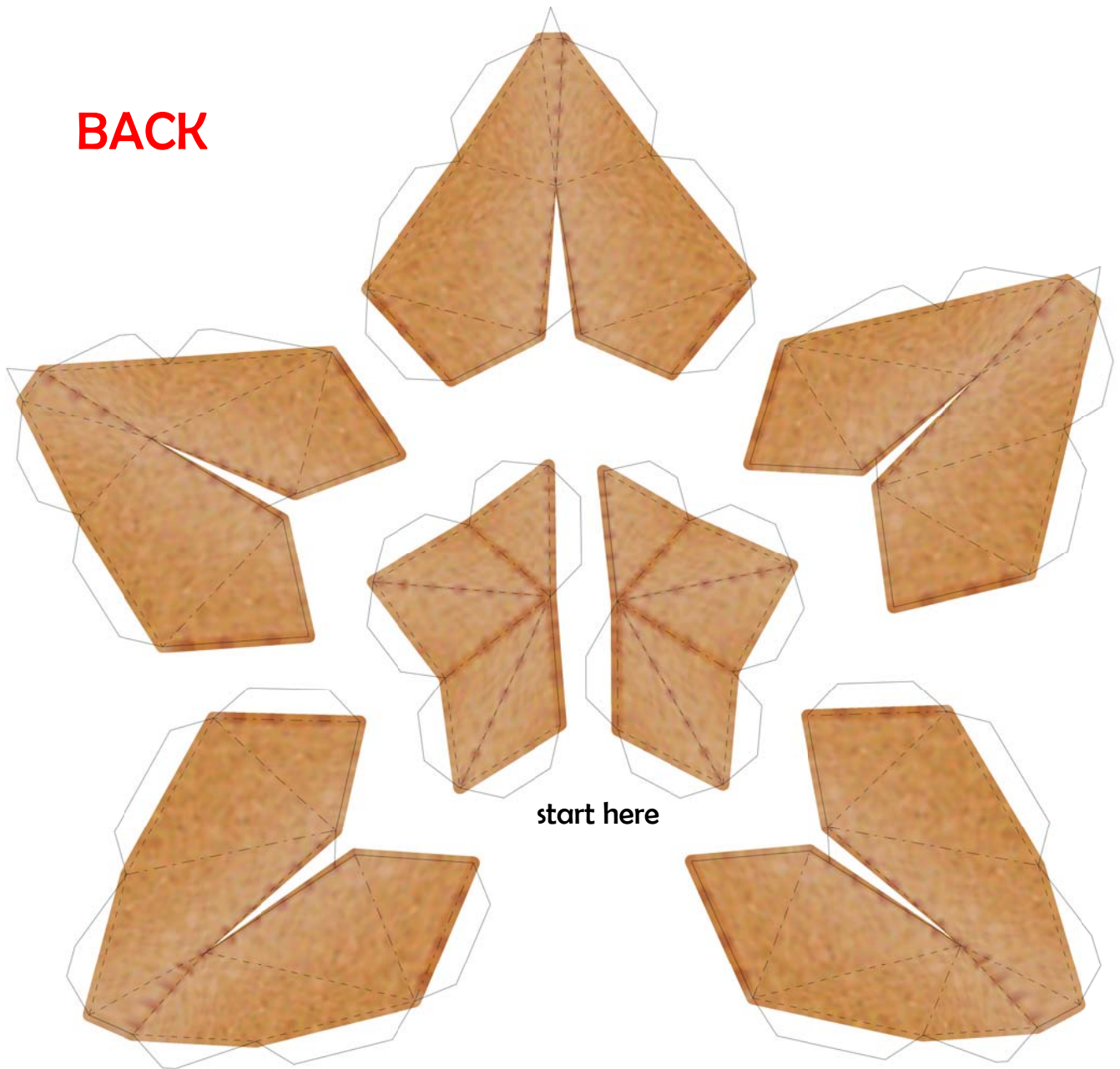
end here

**LEG
BAND**

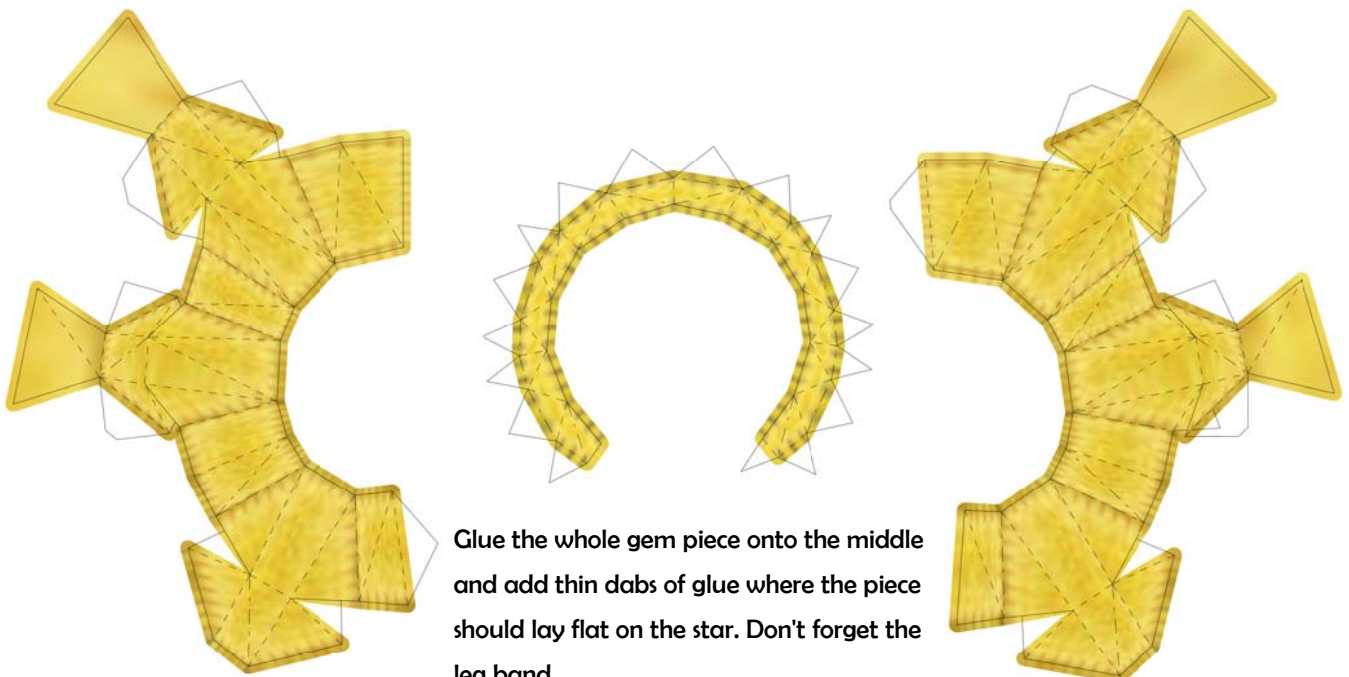
GEM

Close the model at
'end here', it's going to be a bit
tricky but it's okay if you mess up.
The gem and it's setting will cover it up.

BACK



start here



Glue the whole gem piece onto the middle and add thin dabs of glue where the piece should lay flat on the star. Don't forget the leg band.