

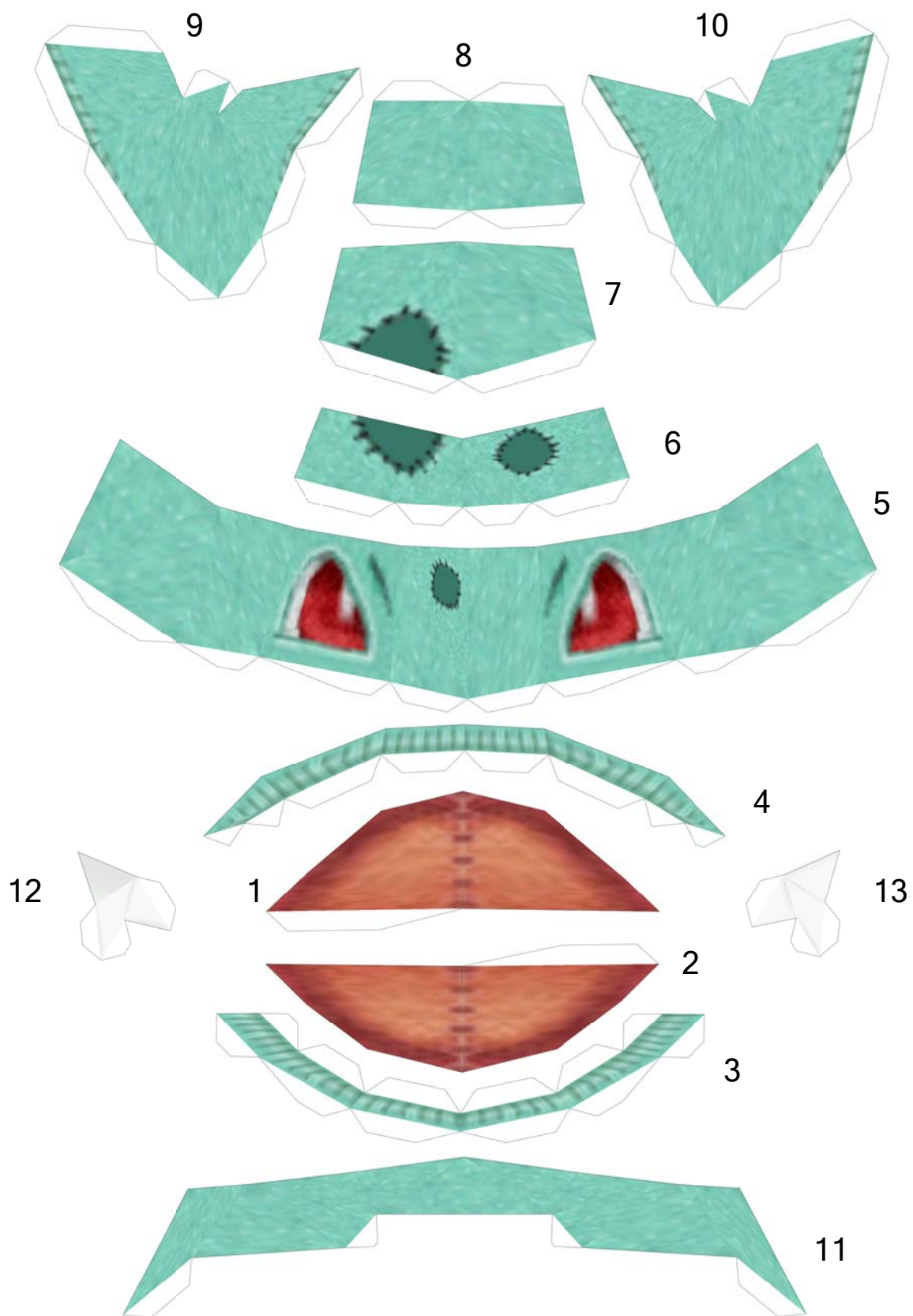
# PokéDolls

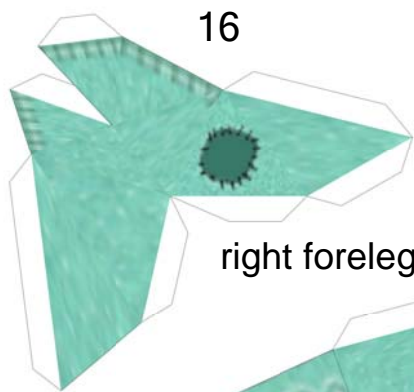


## Bulbasaur

3D Editing by POodragon and Brandon  
Template and Build by Lyrin

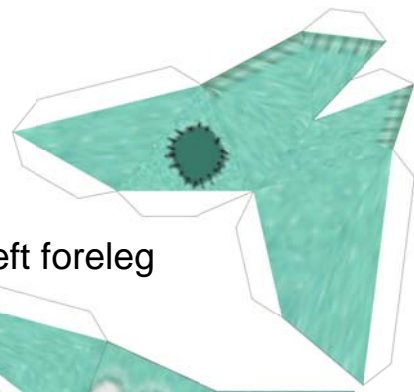






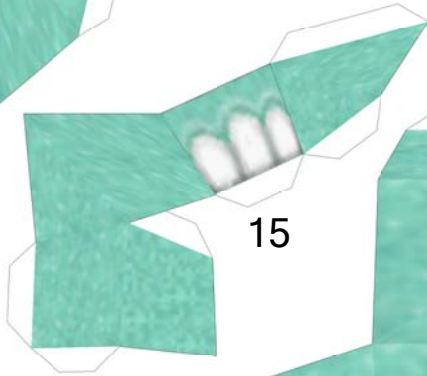
16

right foreleg

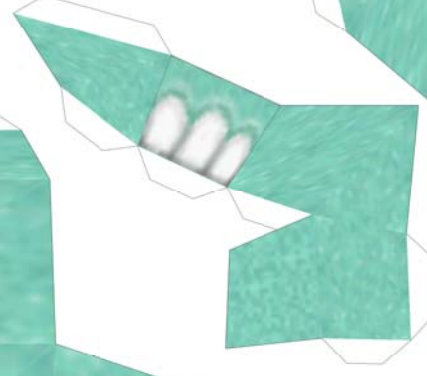


18

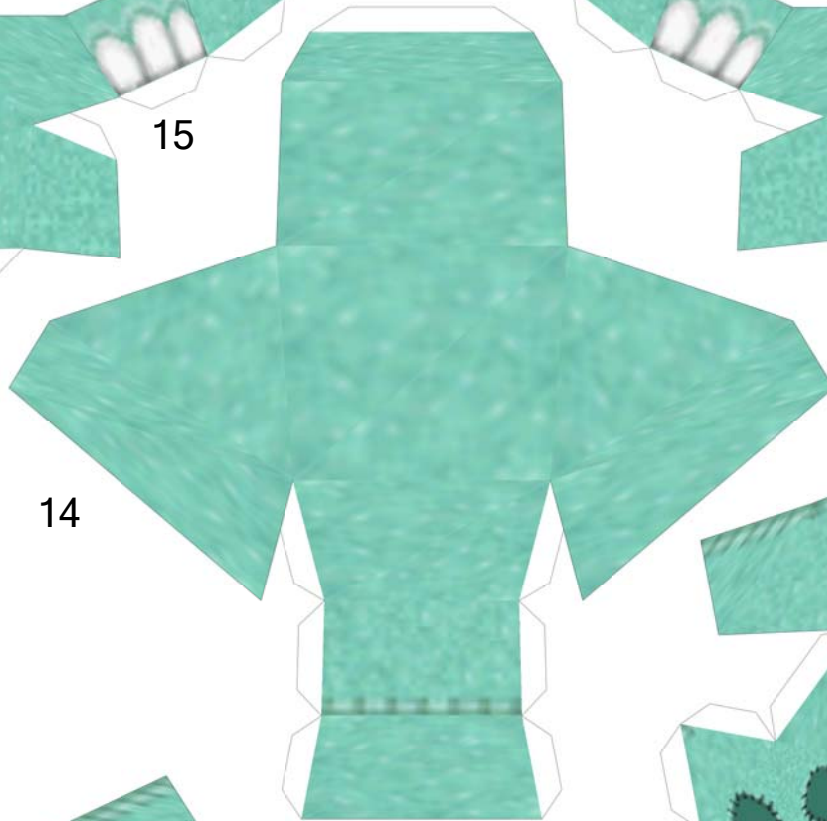
left foreleg



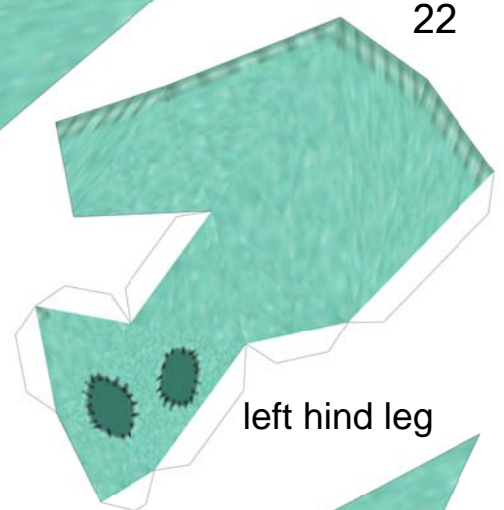
15



17

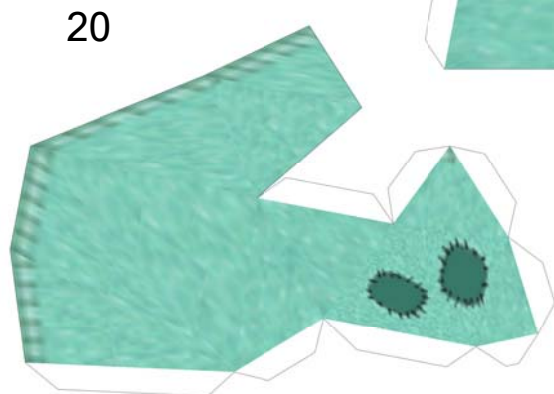


14



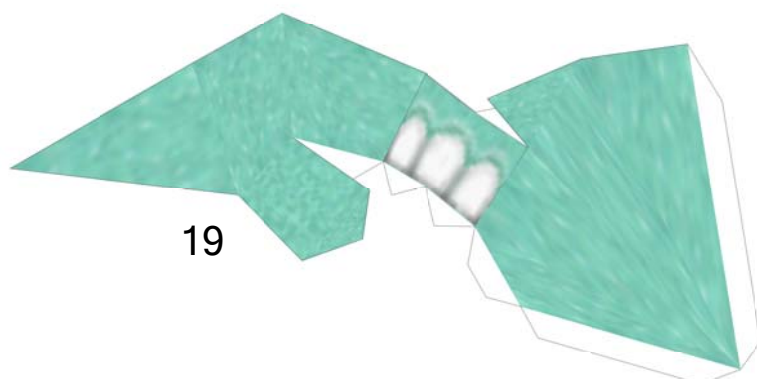
22

left hind leg

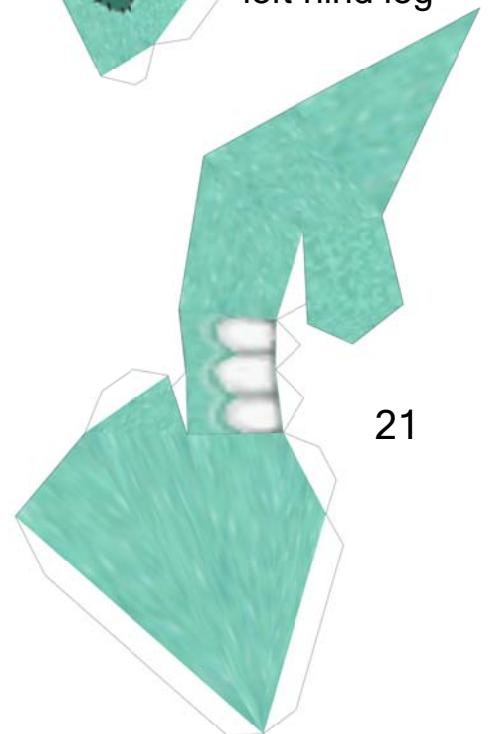


20

right hind leg

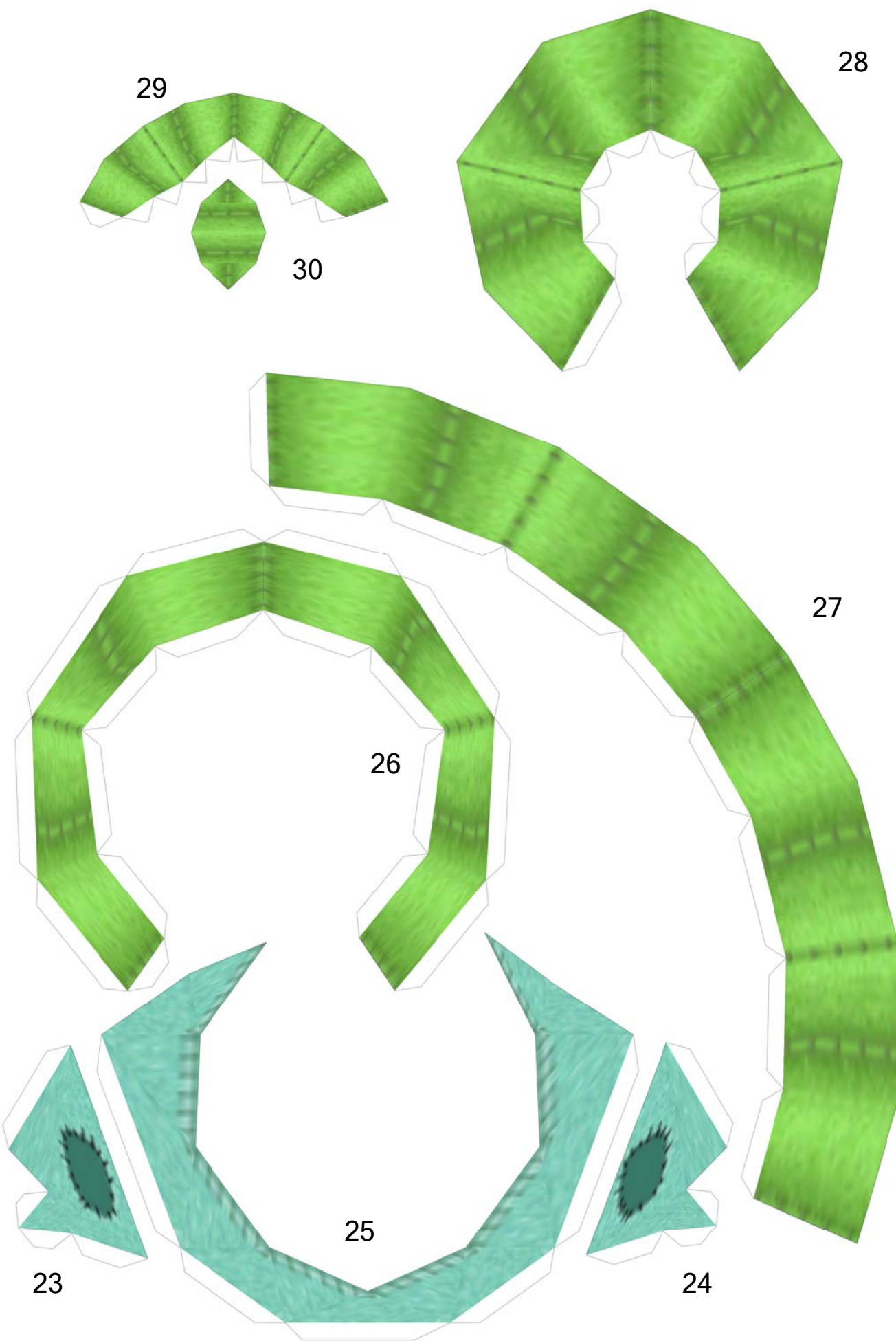


19



21





## Instructions:

The build is pretty straightforward: follow the numbers and you won't have any problem. Though I numbered them, you can add the teeth whenever you want after having assembled pieces 1-4.

A tip for the hind legs: if you don't have tweezers, gluing the legs to piece n.14 could be tricky. To avoid this, first assemble part 15, glue it to part 14, then glue part 16. Do the same thing with parts 17 and 18. And, have fun building! :D