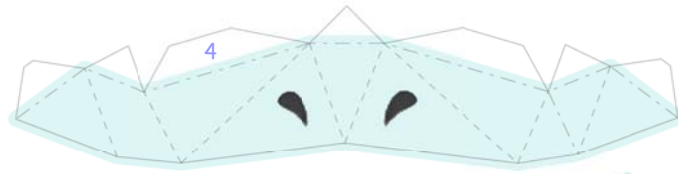


PSYDUCK

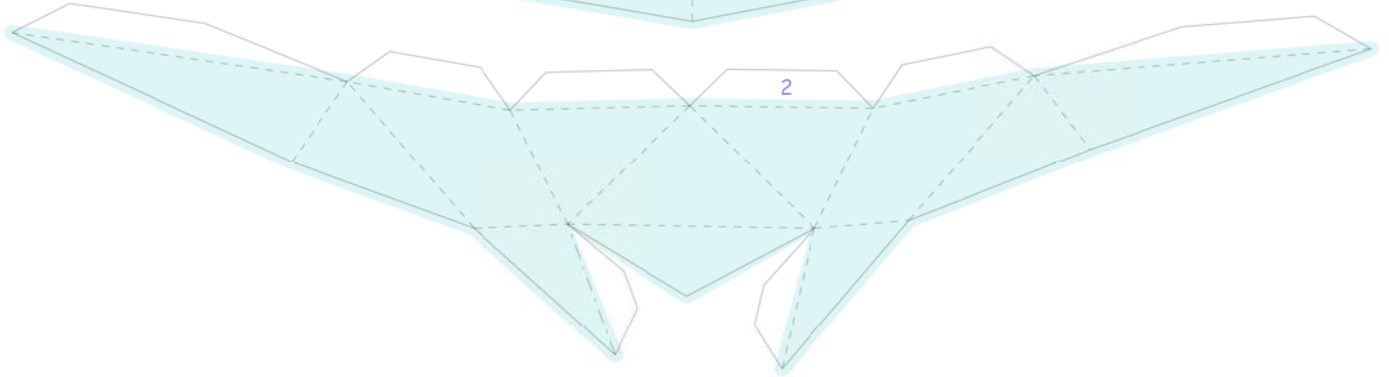
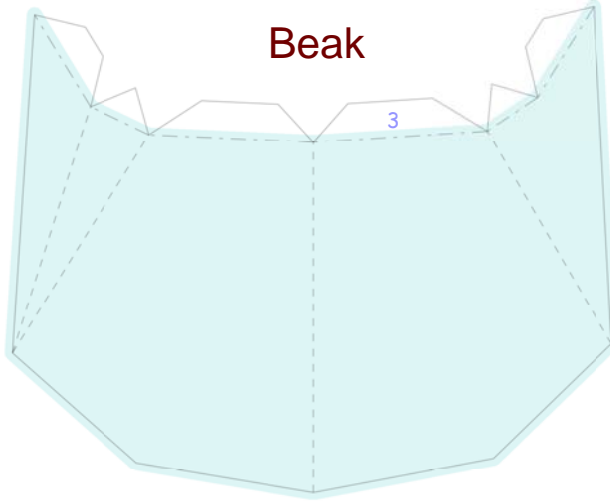
VERSION 2

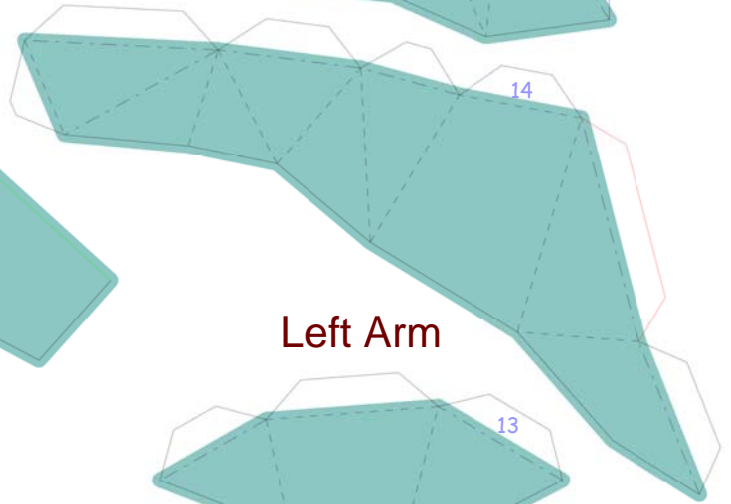
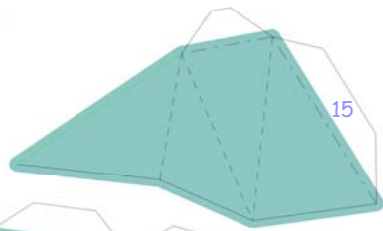
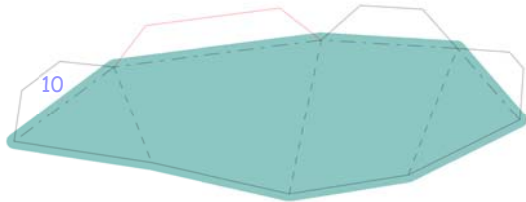
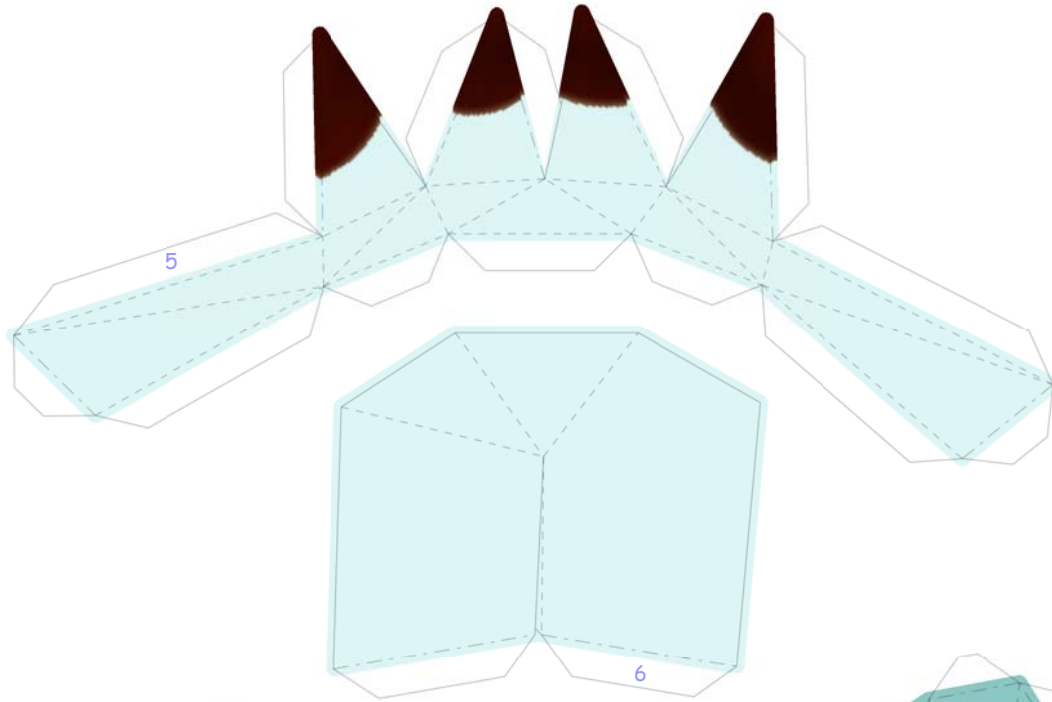


PaperPokés
www.pokemonpapercraft.com

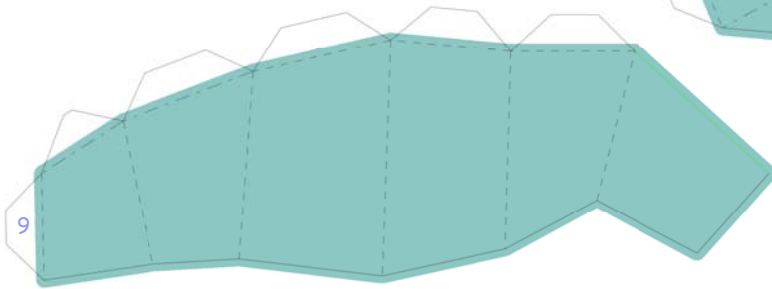


Beak

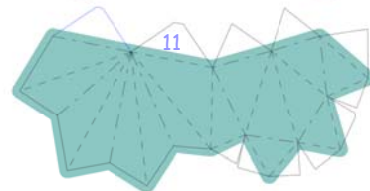
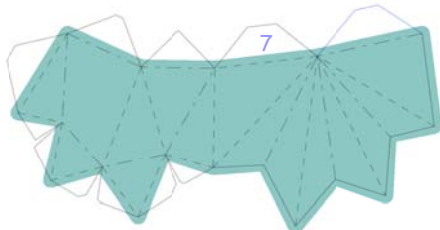
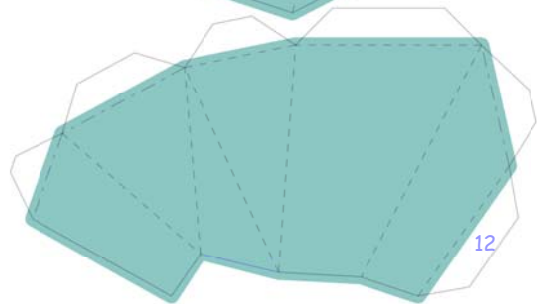
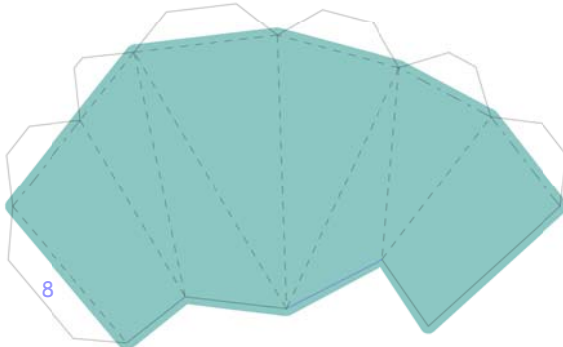


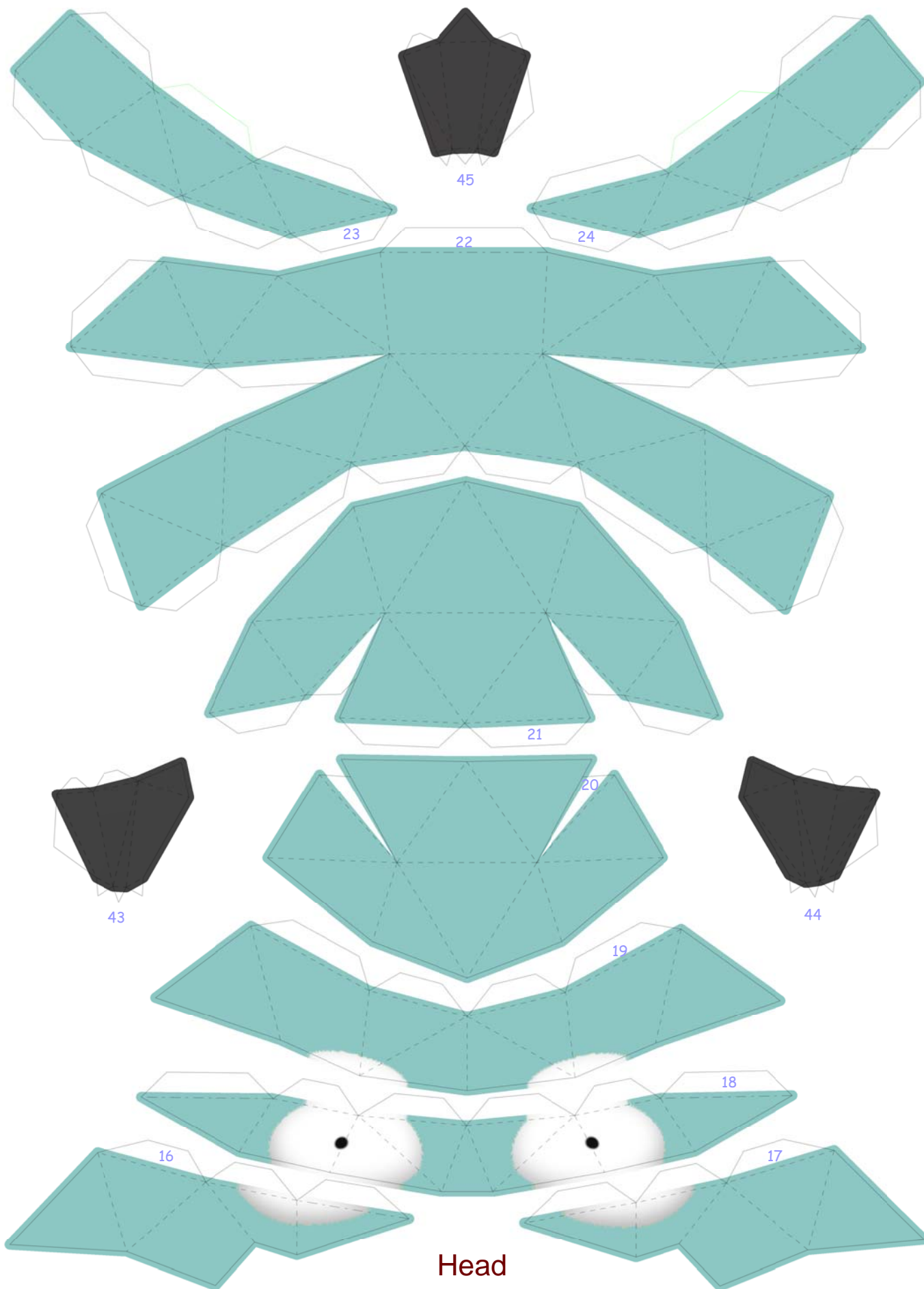


Left Arm

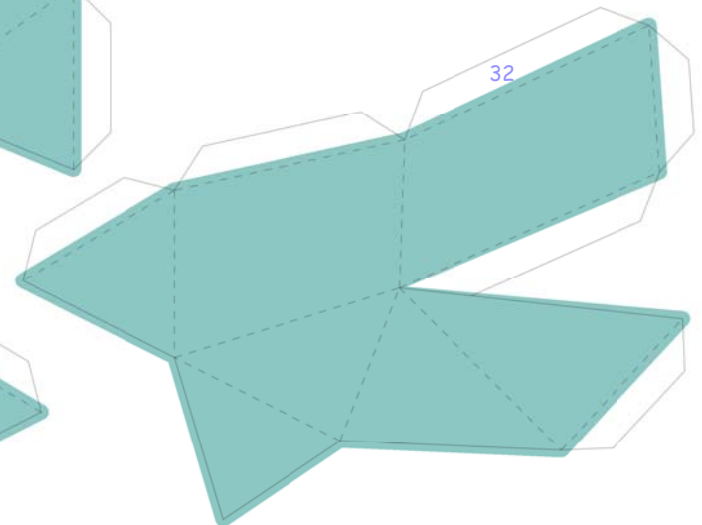
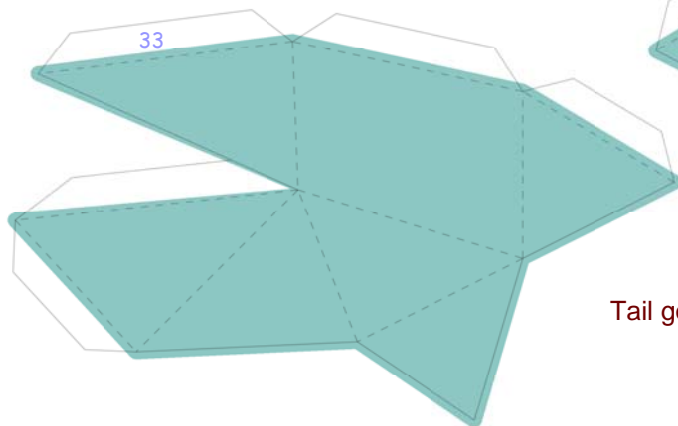
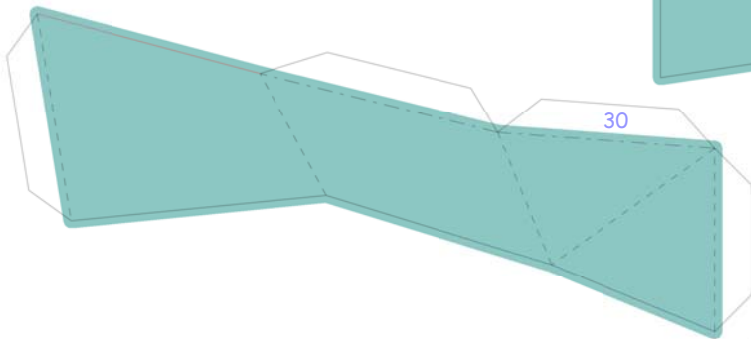
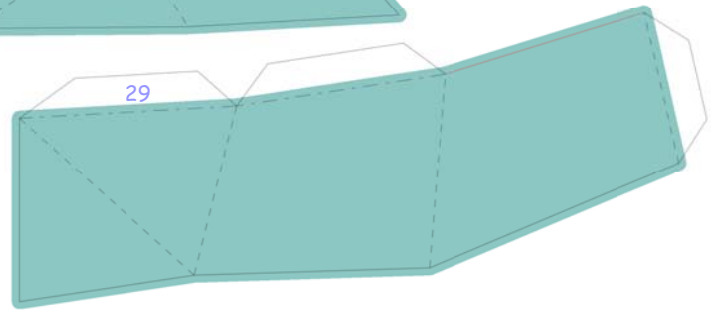
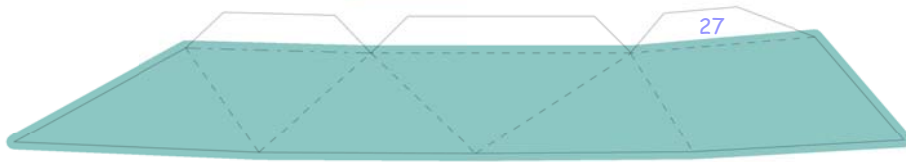


Right Arm

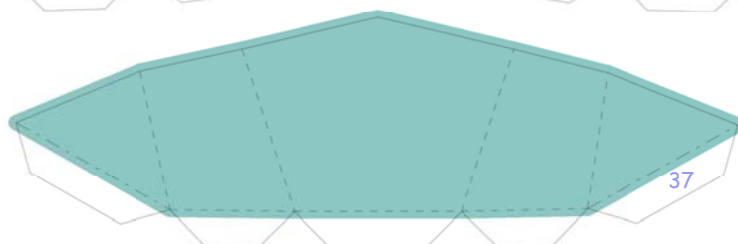
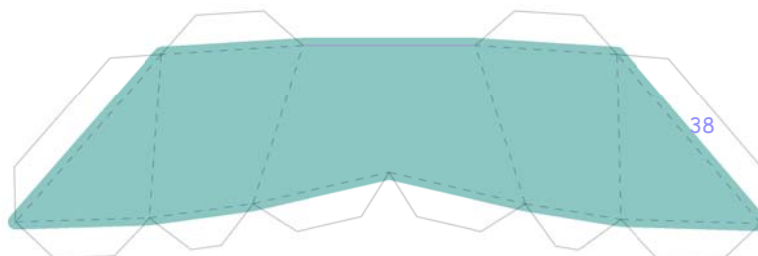




Back

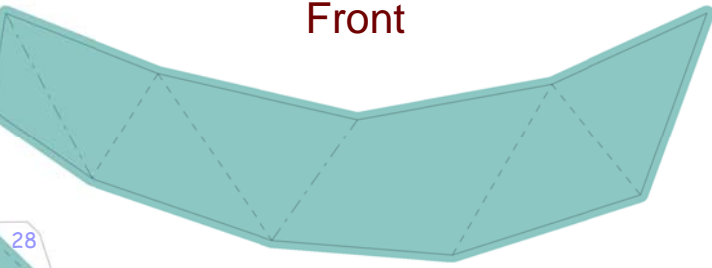


Tail goes here

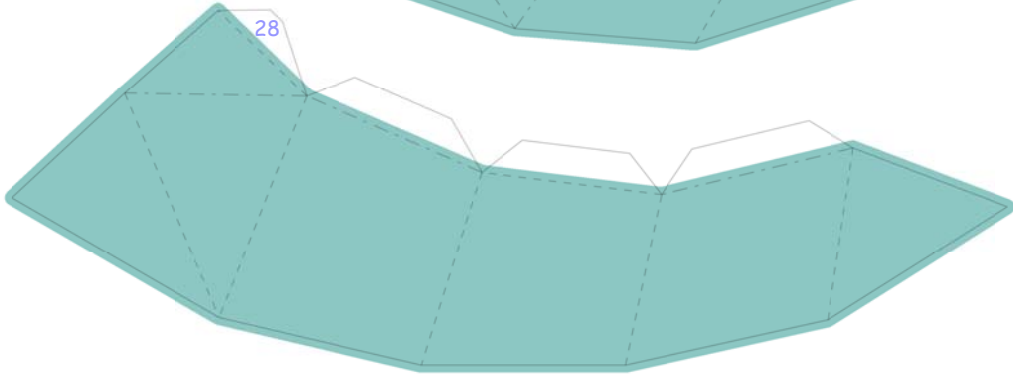


Front

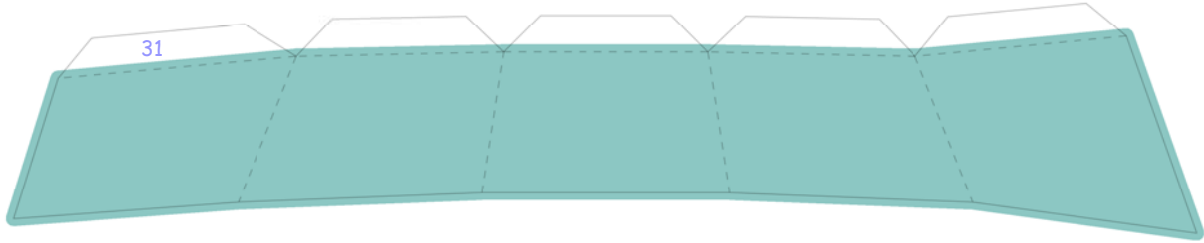
26



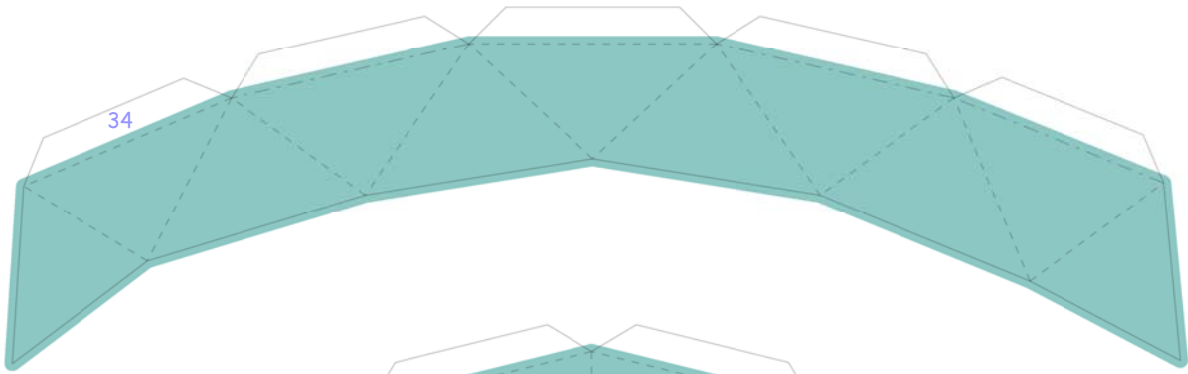
28



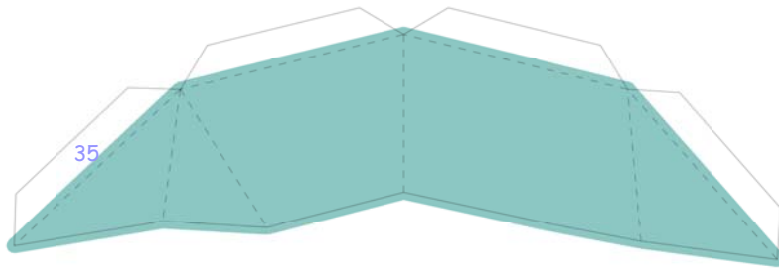
31



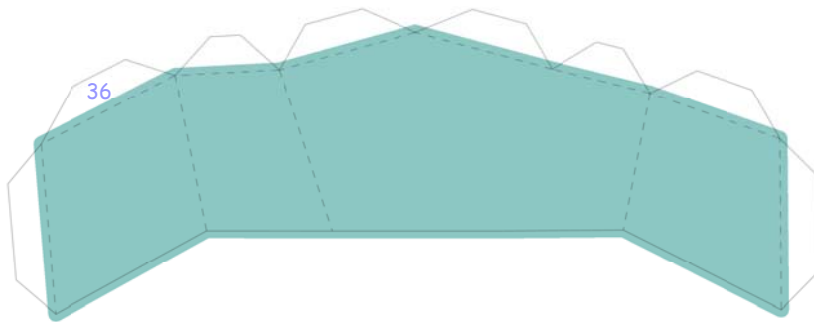
34



35

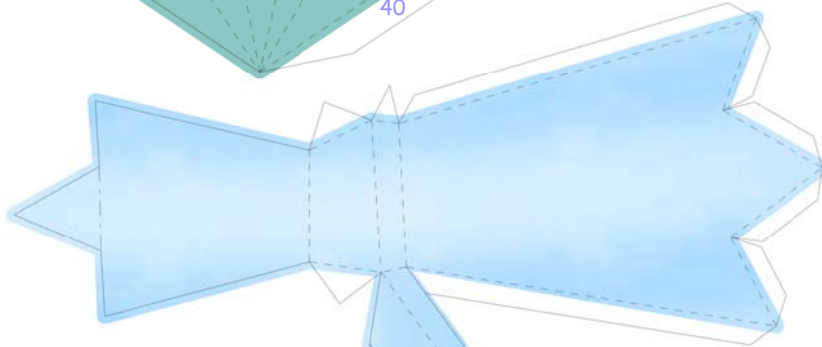
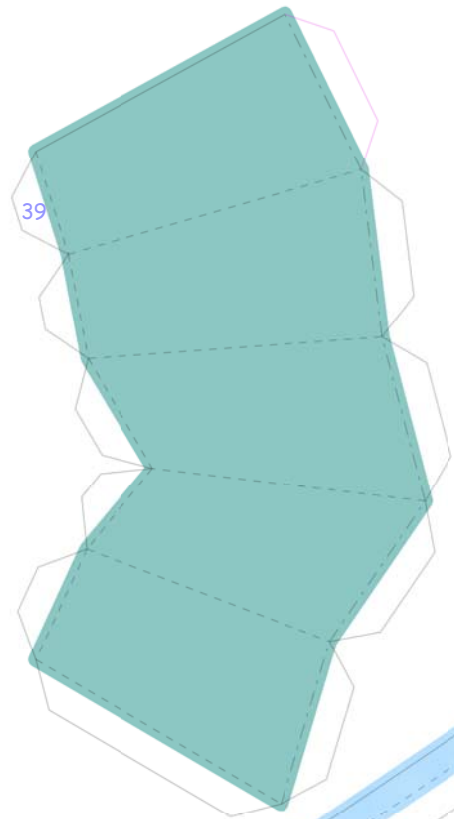
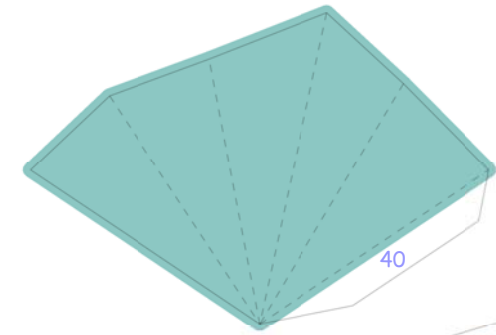


36



Tail

Close body at tail
by wrapping the tip
around the base part



Left Foot

Start at the sole of the foot
and close at the top of the foot



Right Foot

