

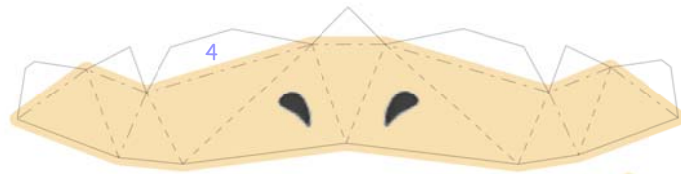
# PSYDUCK

VERSION 2

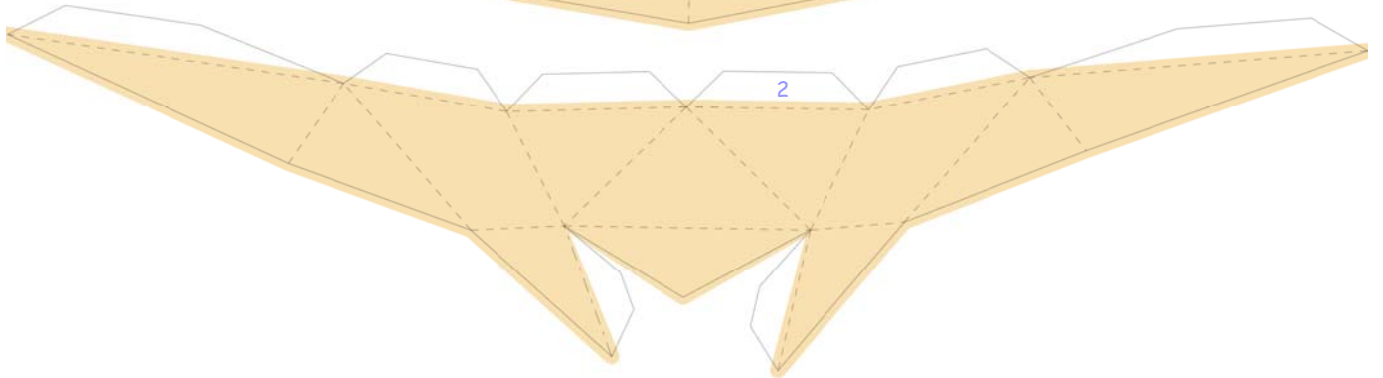
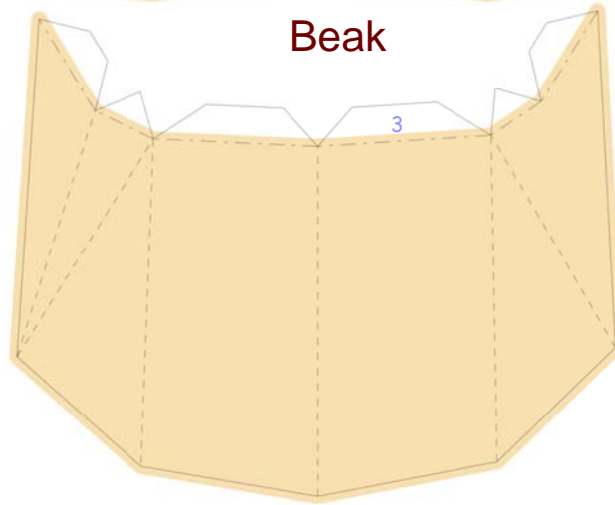


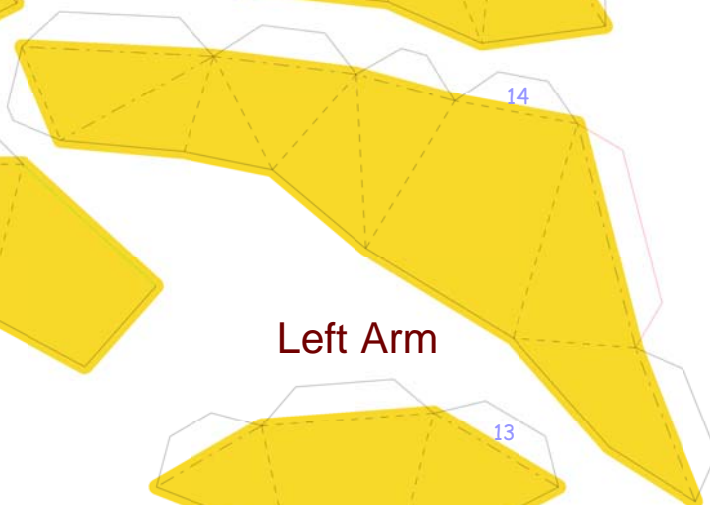
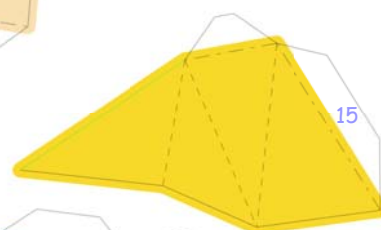
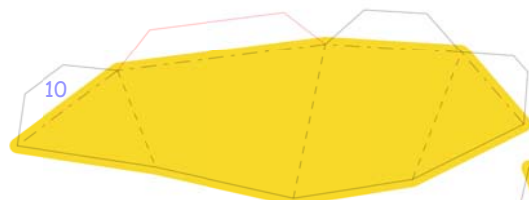
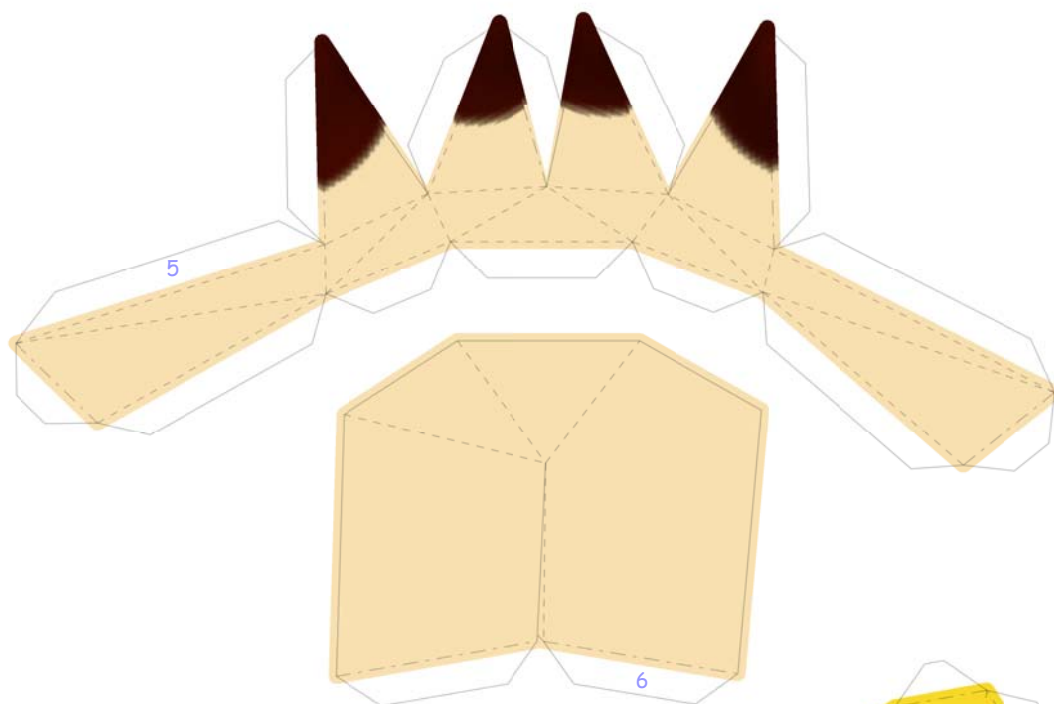
**PaperPokés**  
[www.pokemonpapercraft.com](http://www.pokemonpapercraft.com)

---

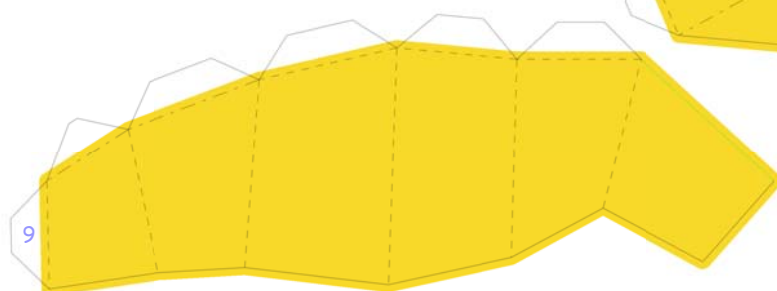


Beak

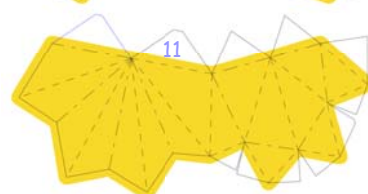
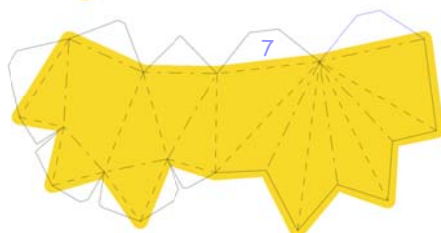
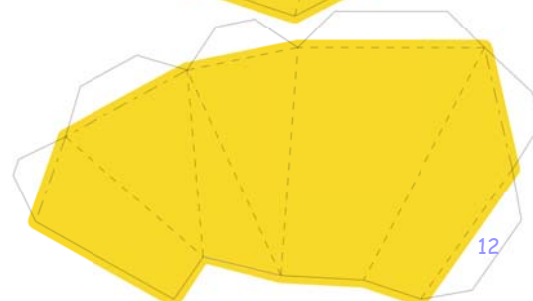
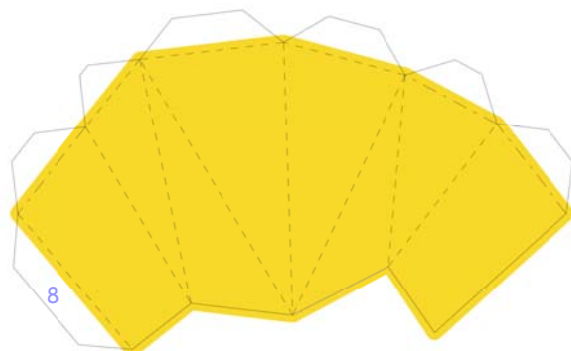
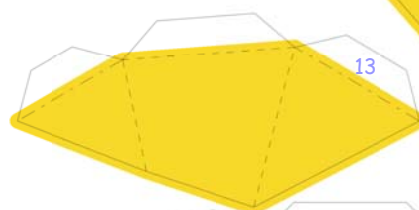


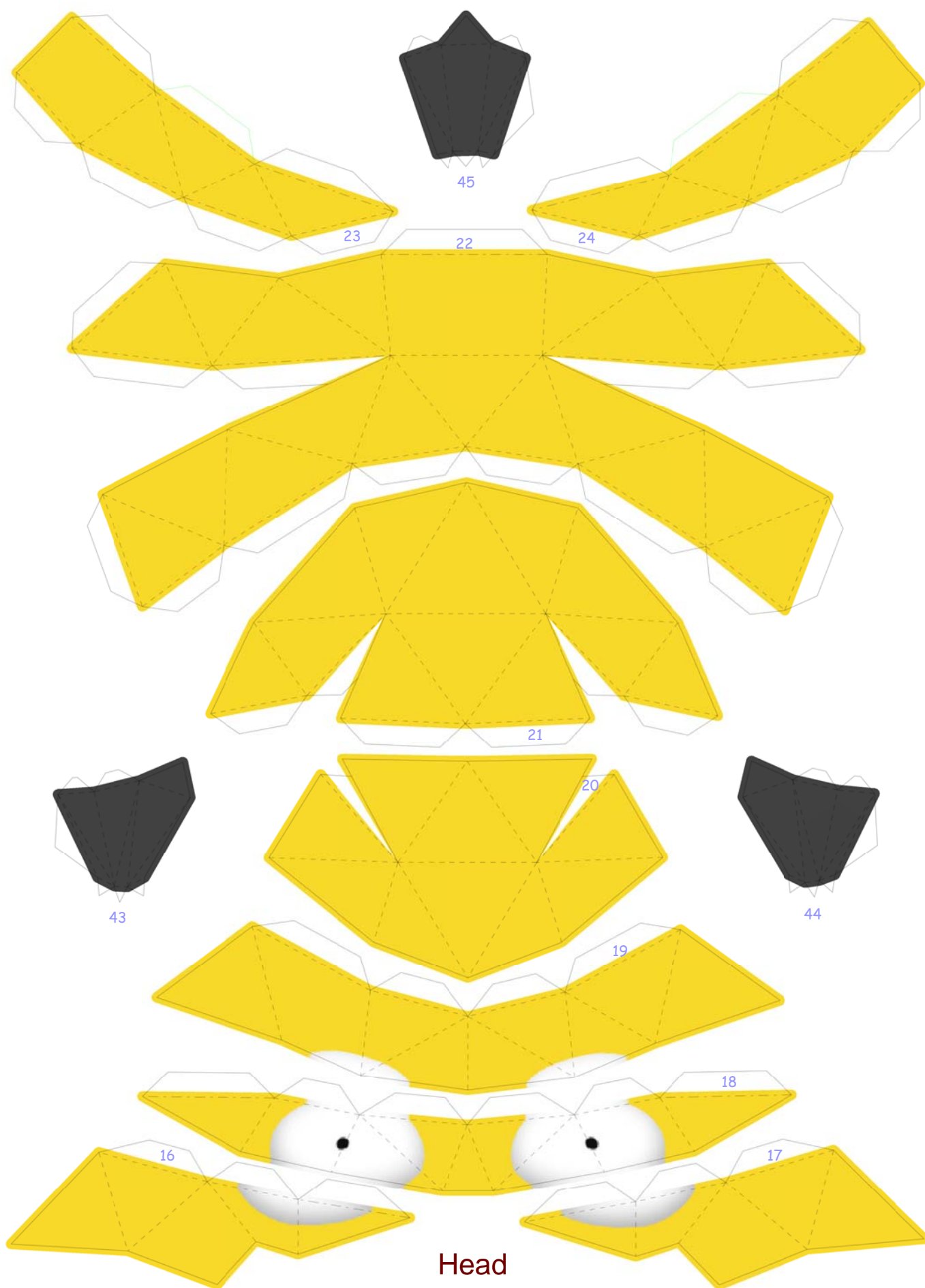


Left Arm

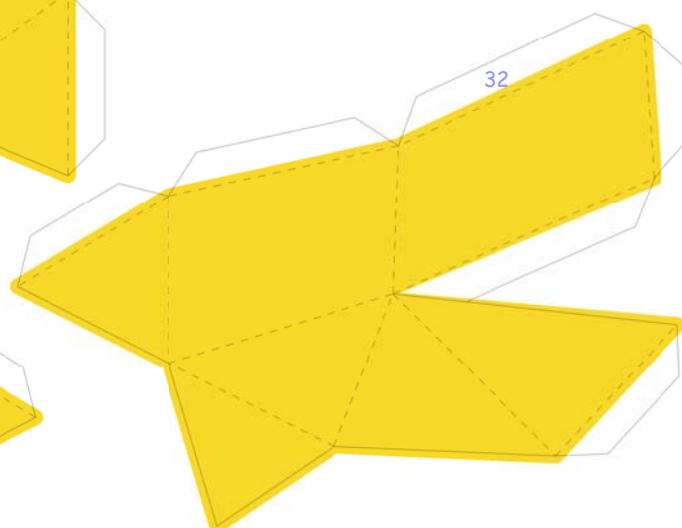
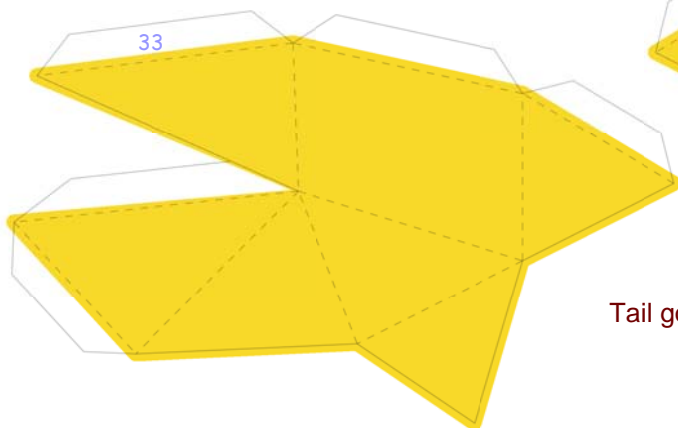
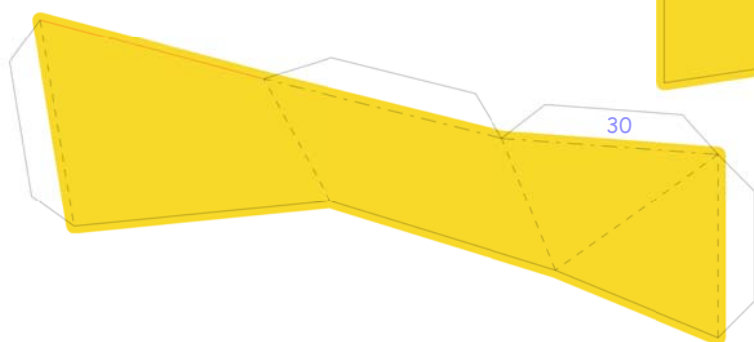
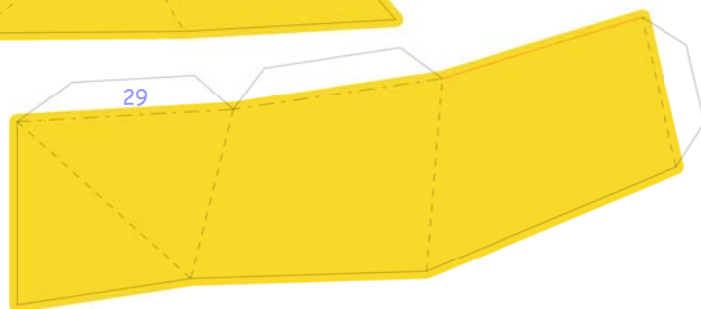
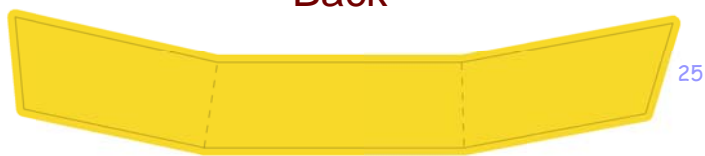


Right Arm

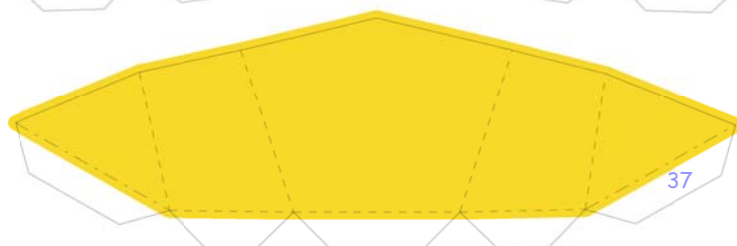
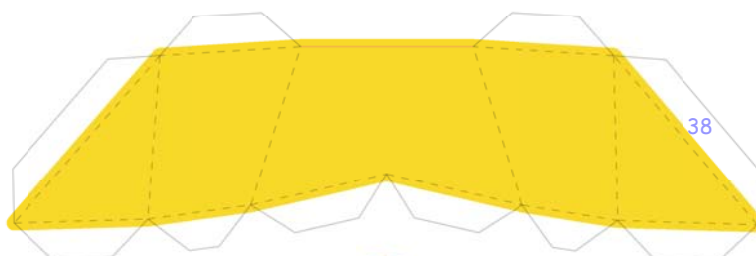




Back



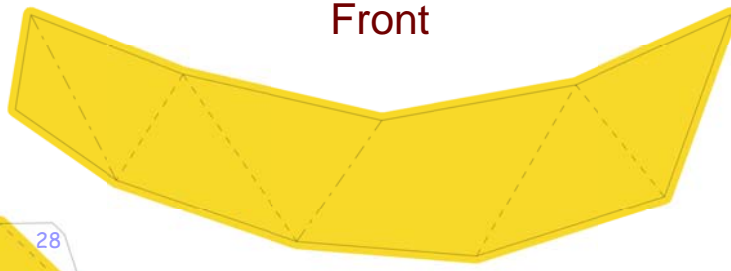
Tail goes here



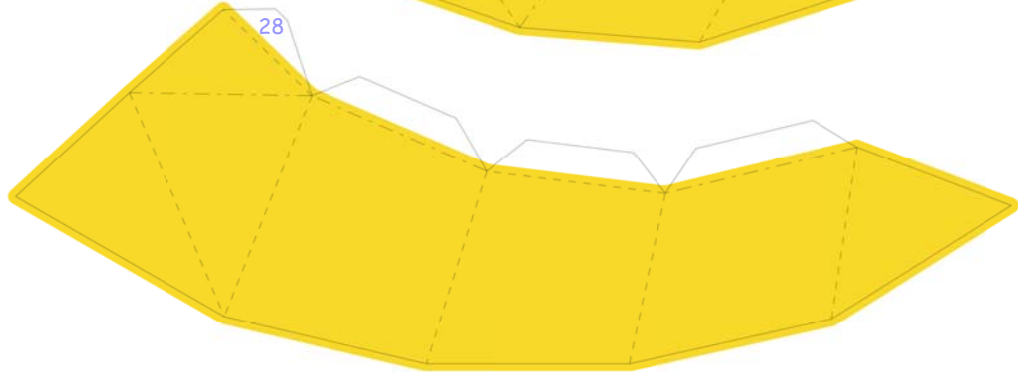


Front

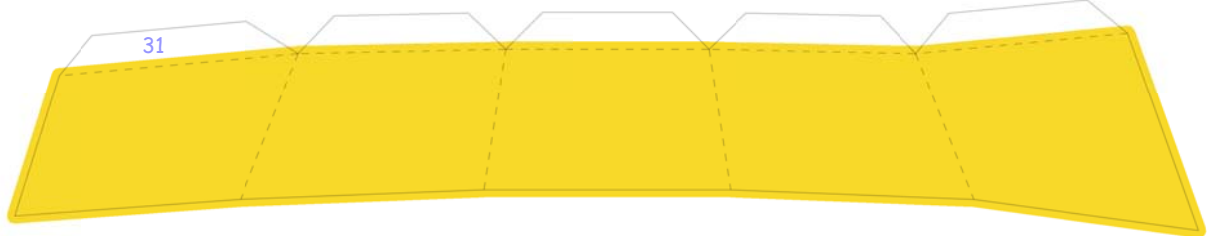
26



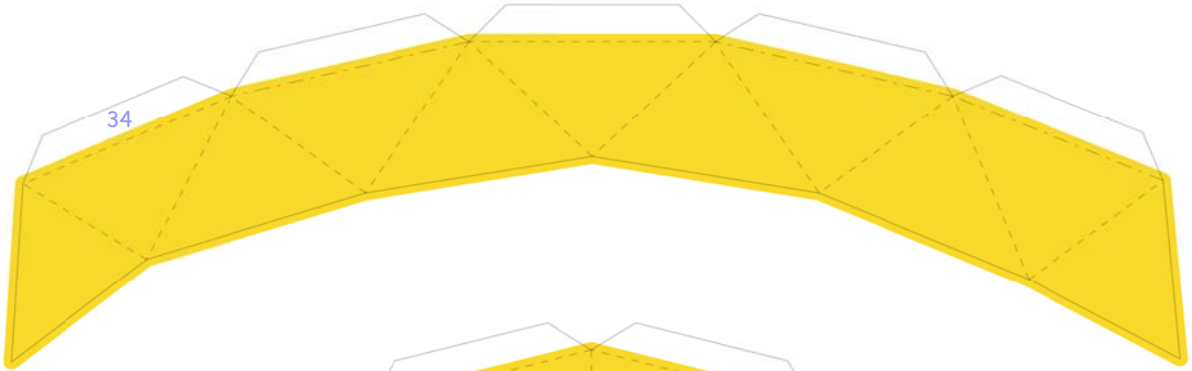
28



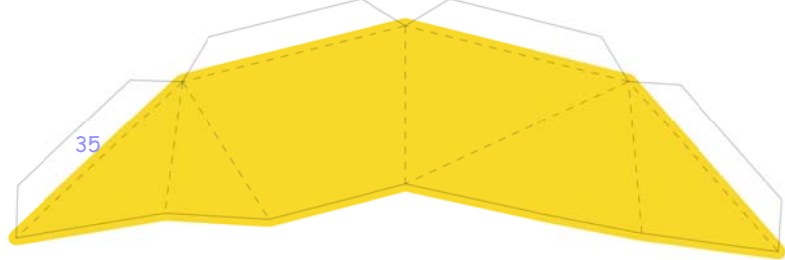
31



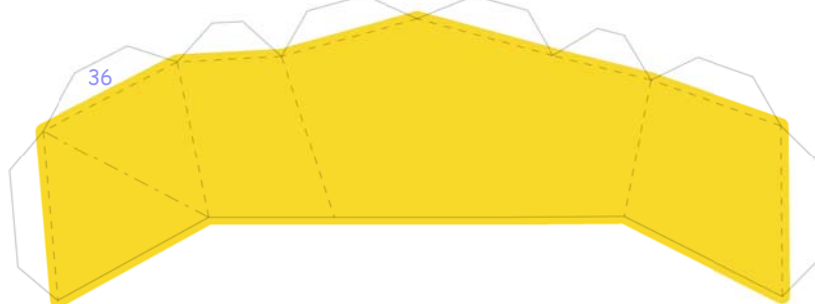
34



35

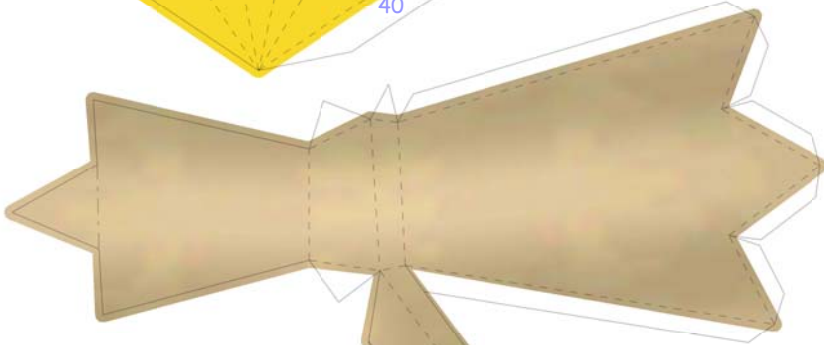
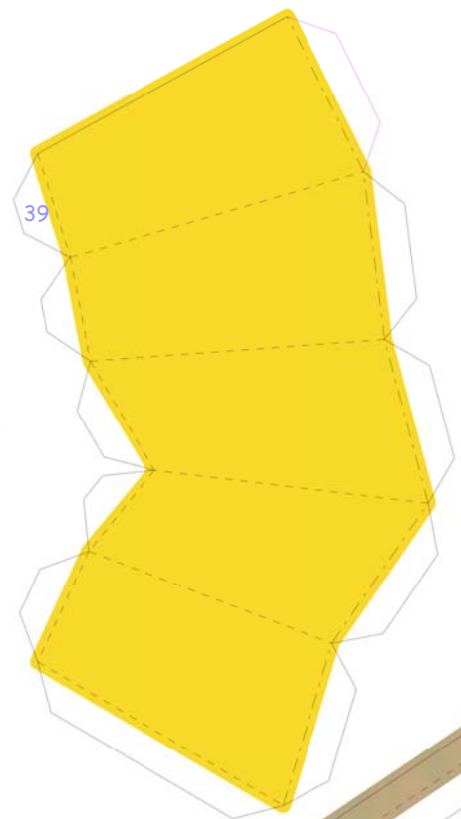
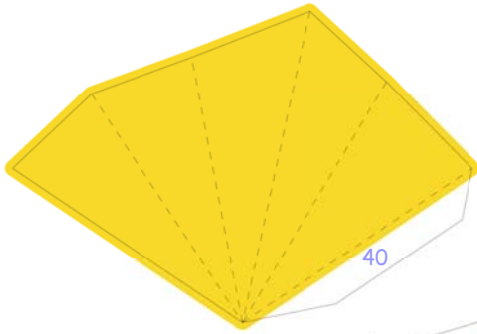


36



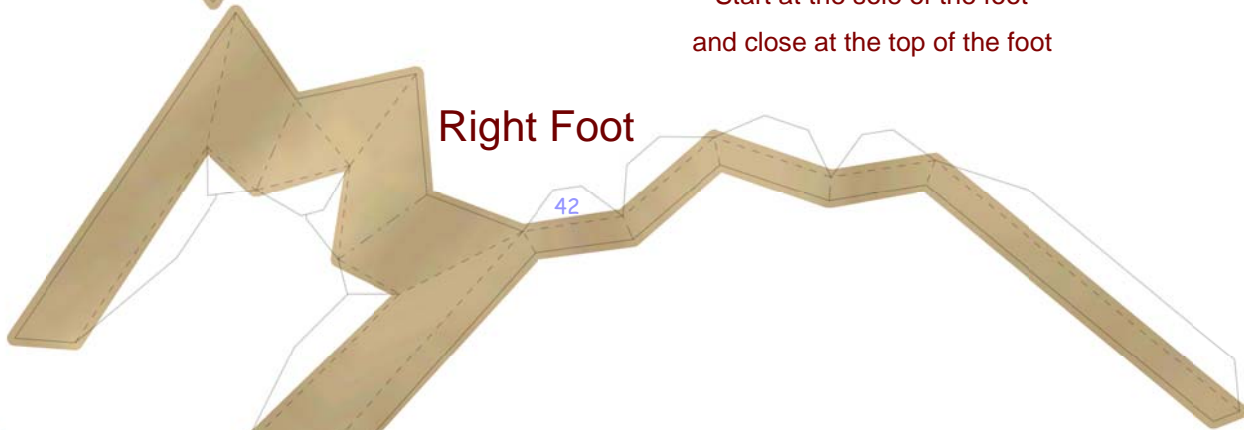
## Tail

Close body at tail  
by wrapping the tip  
around the base part



## Left Foot

Start at the sole of the foot  
and close at the top of the foot



## Right Foot

