

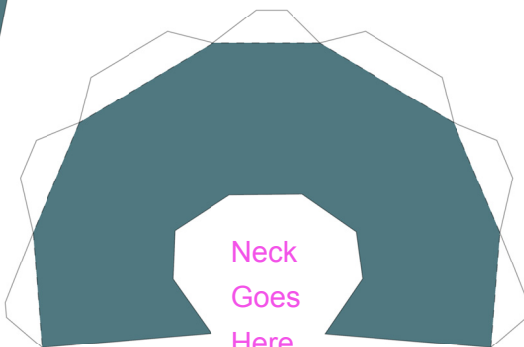
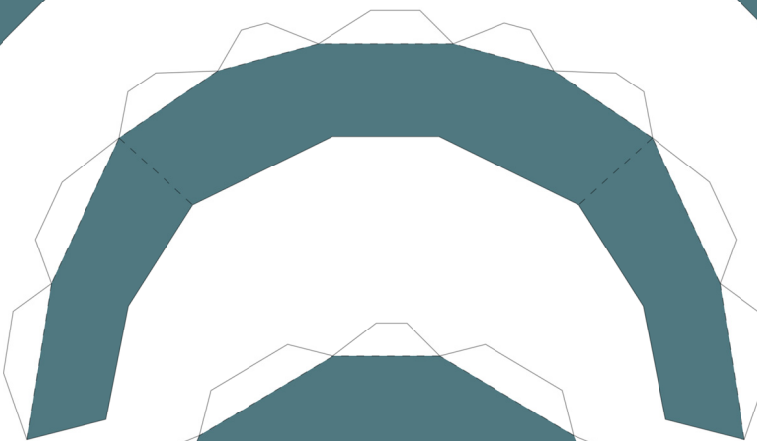
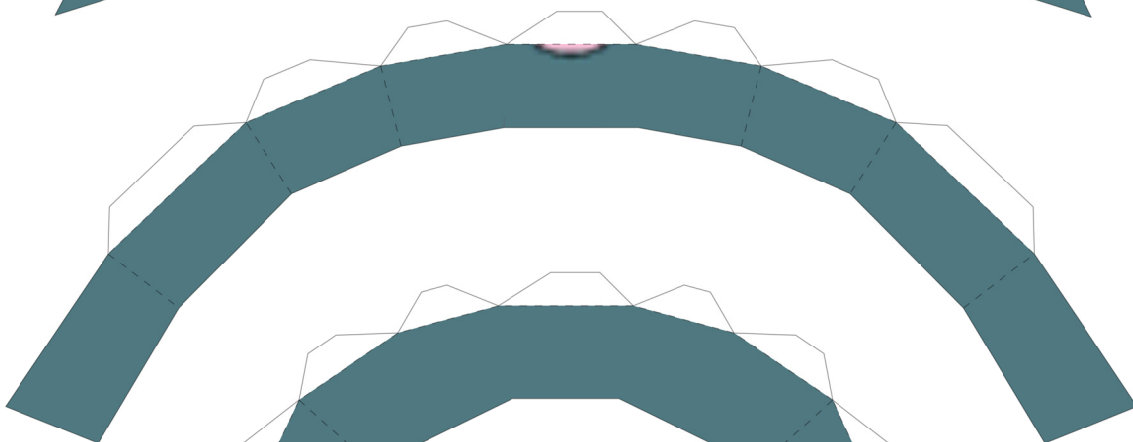
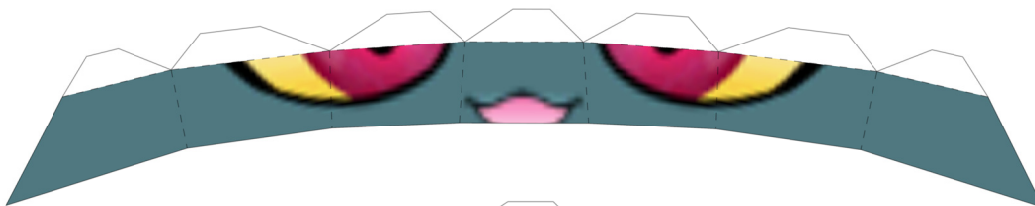
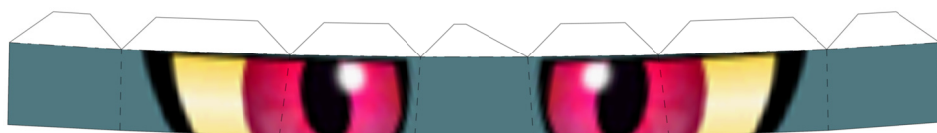
Misdreavus

By POdragon

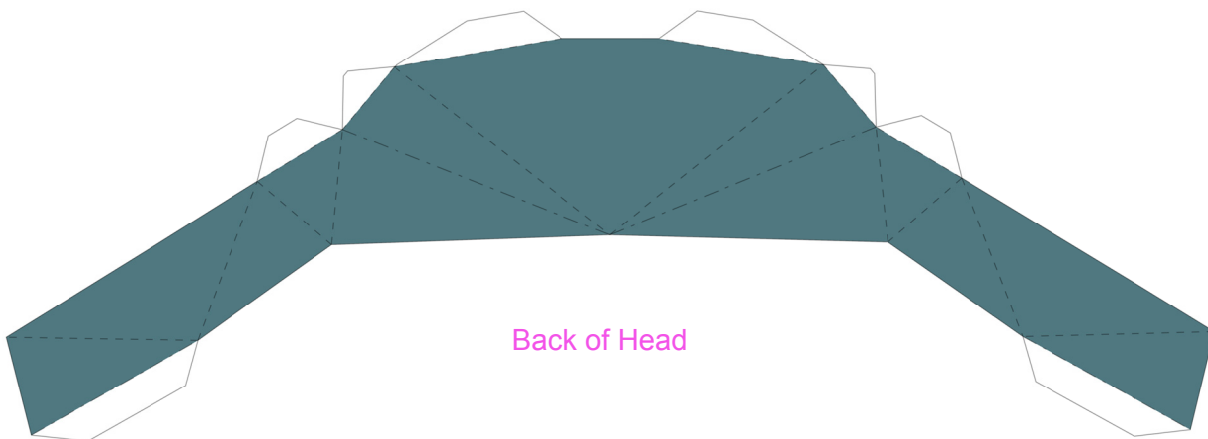


PaperPokés
www.pokemonpapercraft.com



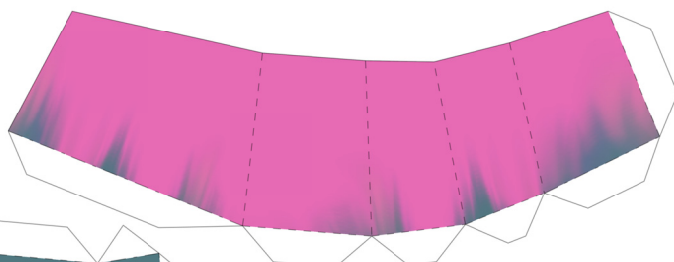
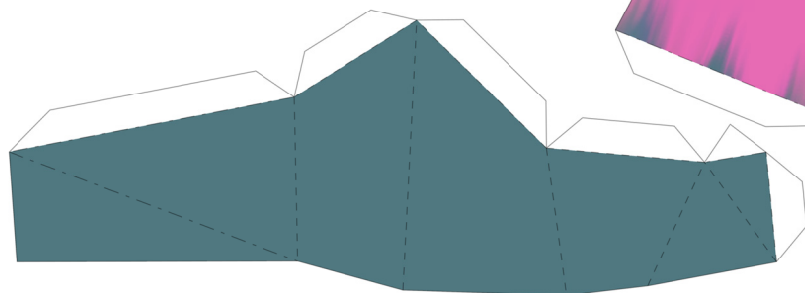
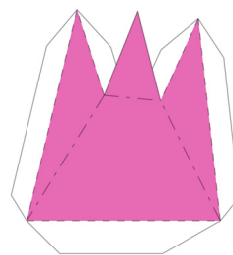
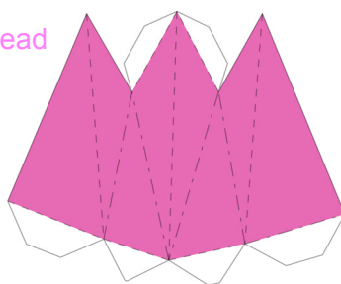
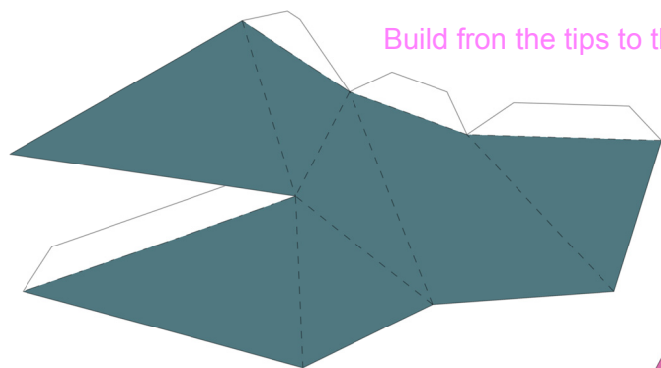


Neck
Goes
Here

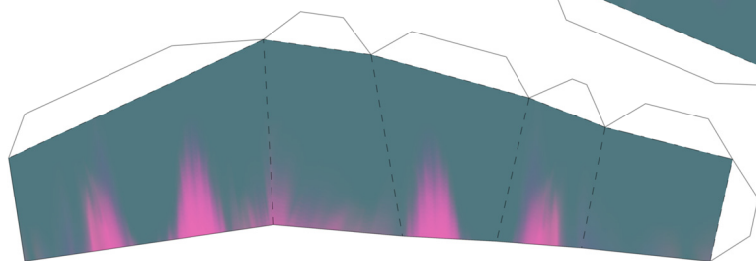
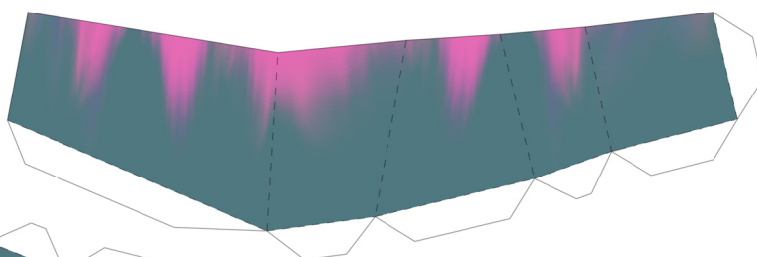


Back of Head

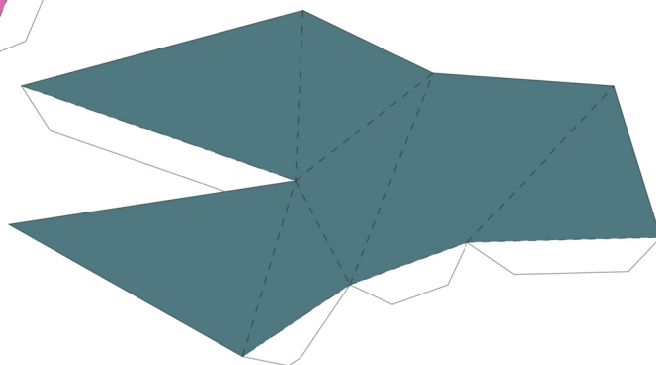
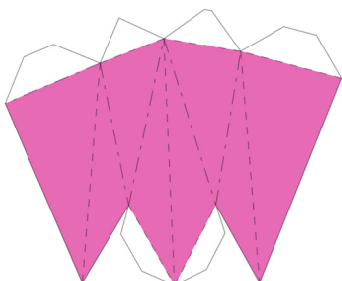
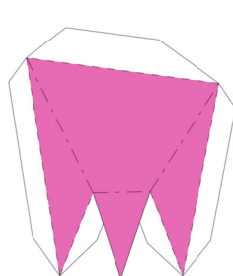
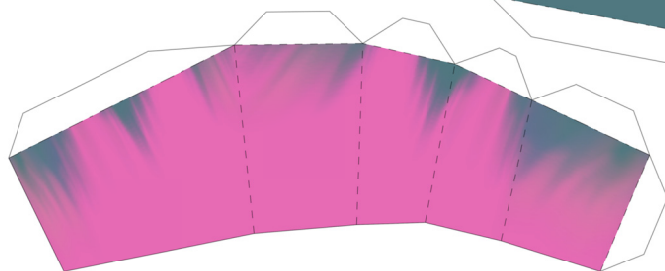
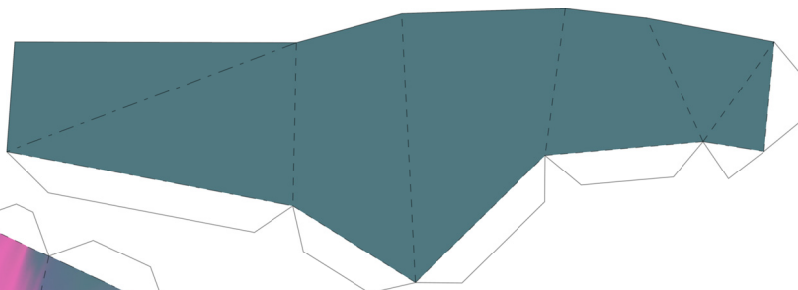
Build from the tips to the head

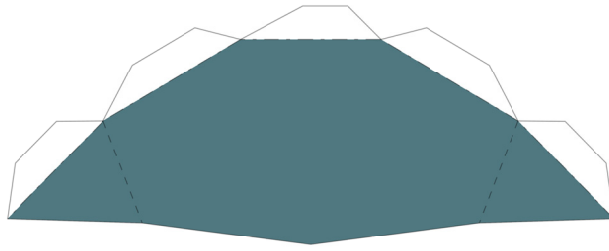


Right Front
Dreadlock

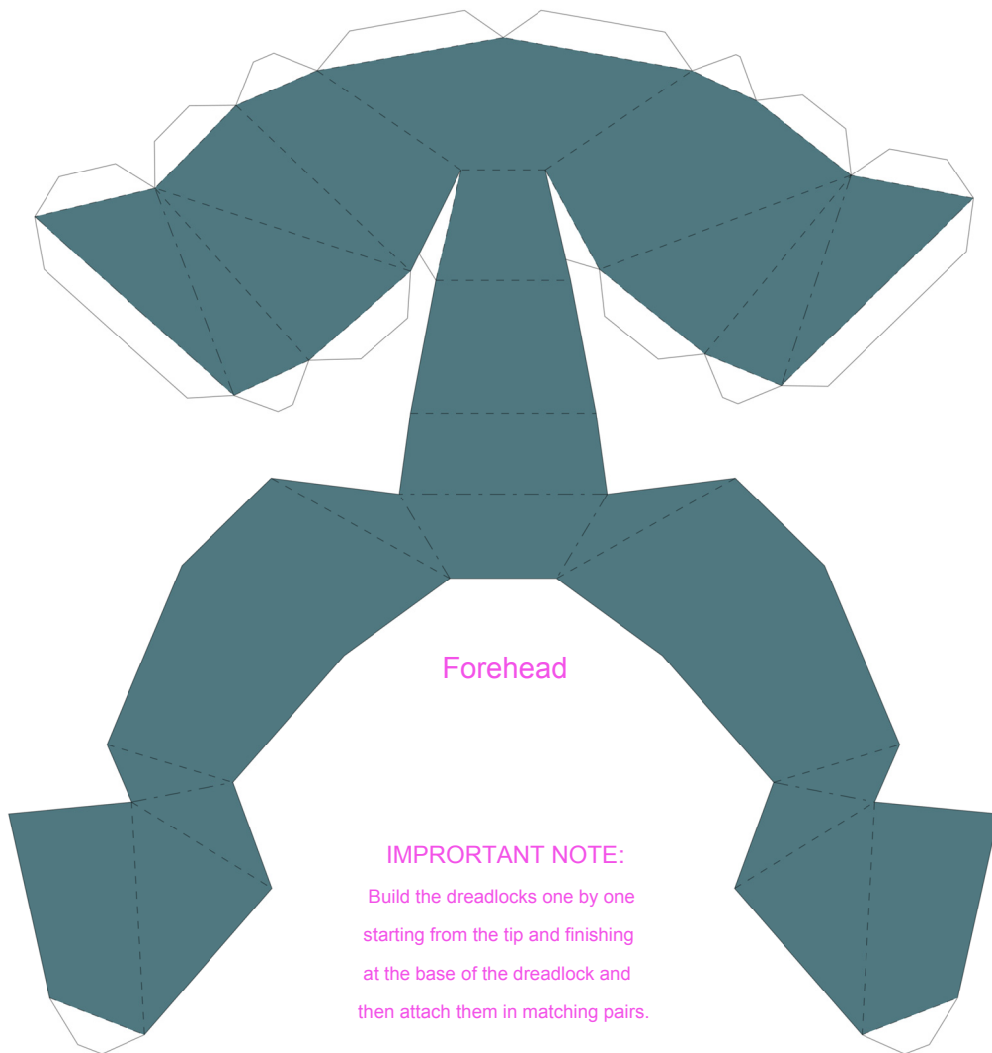
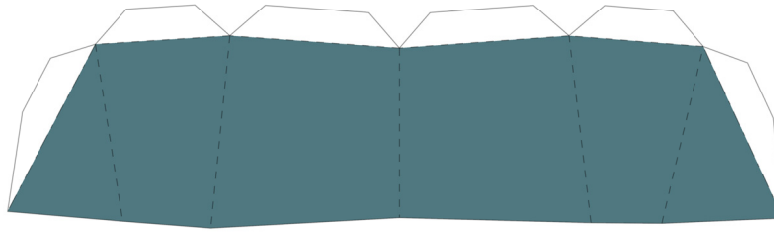


Left front
Dreadlock





Top of Head

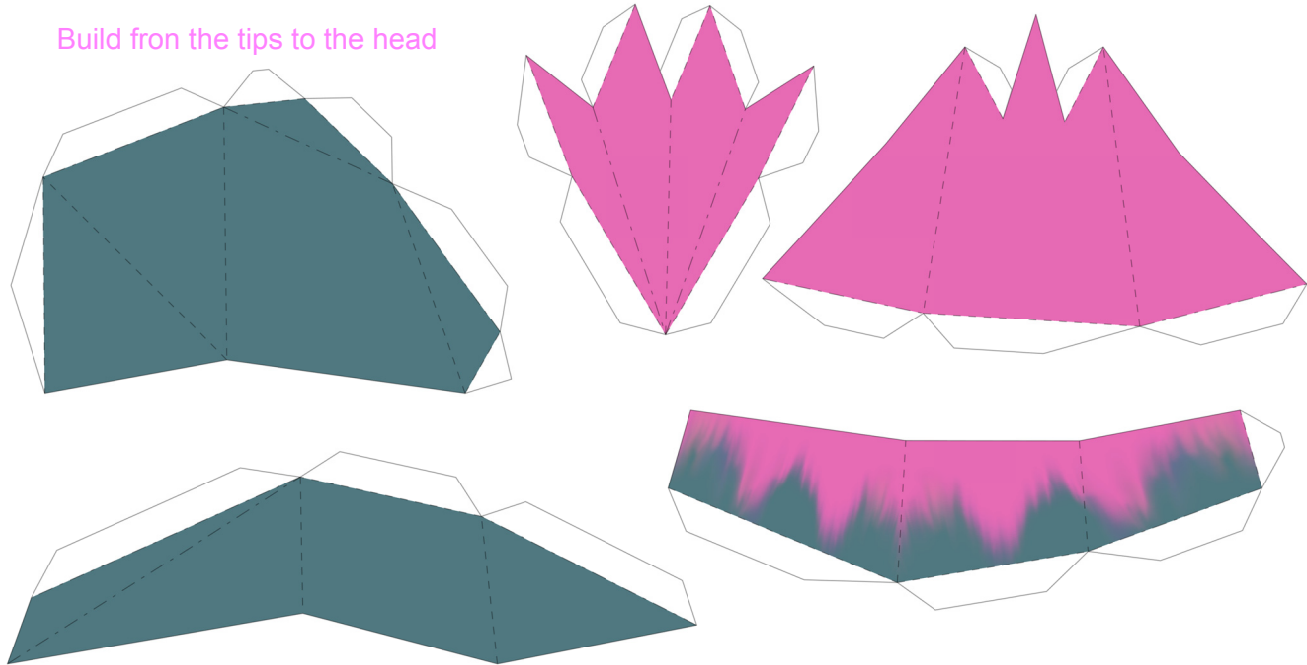


Forehead

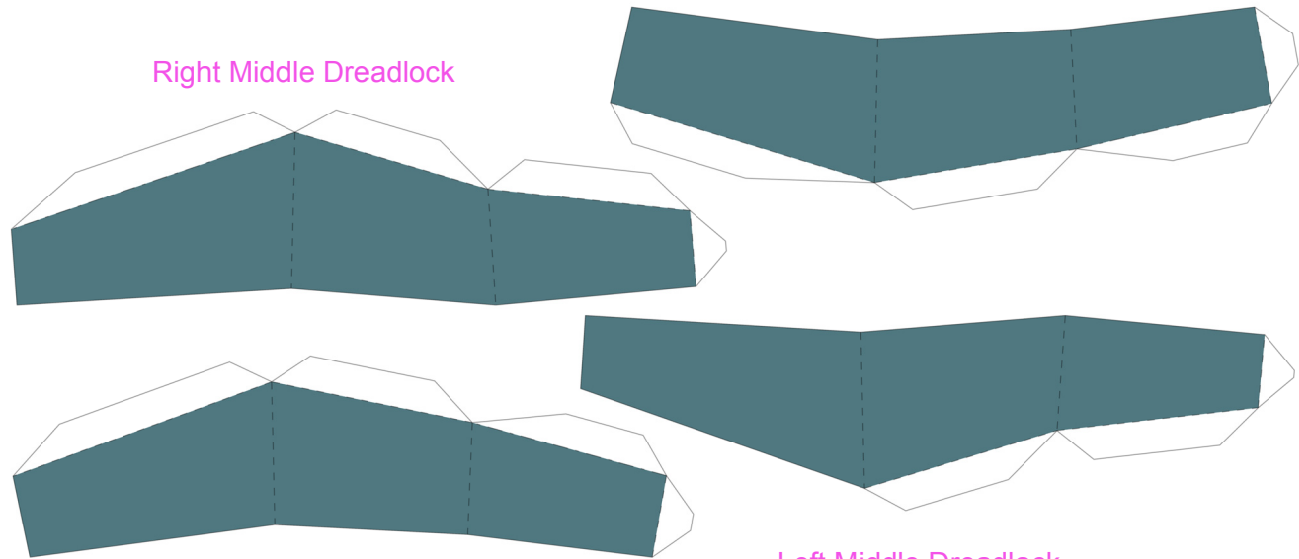
IMPORTANT NOTE:

Build the dreadlocks one by one starting from the tip and finishing at the base of the dreadlock and then attach them in matching pairs.

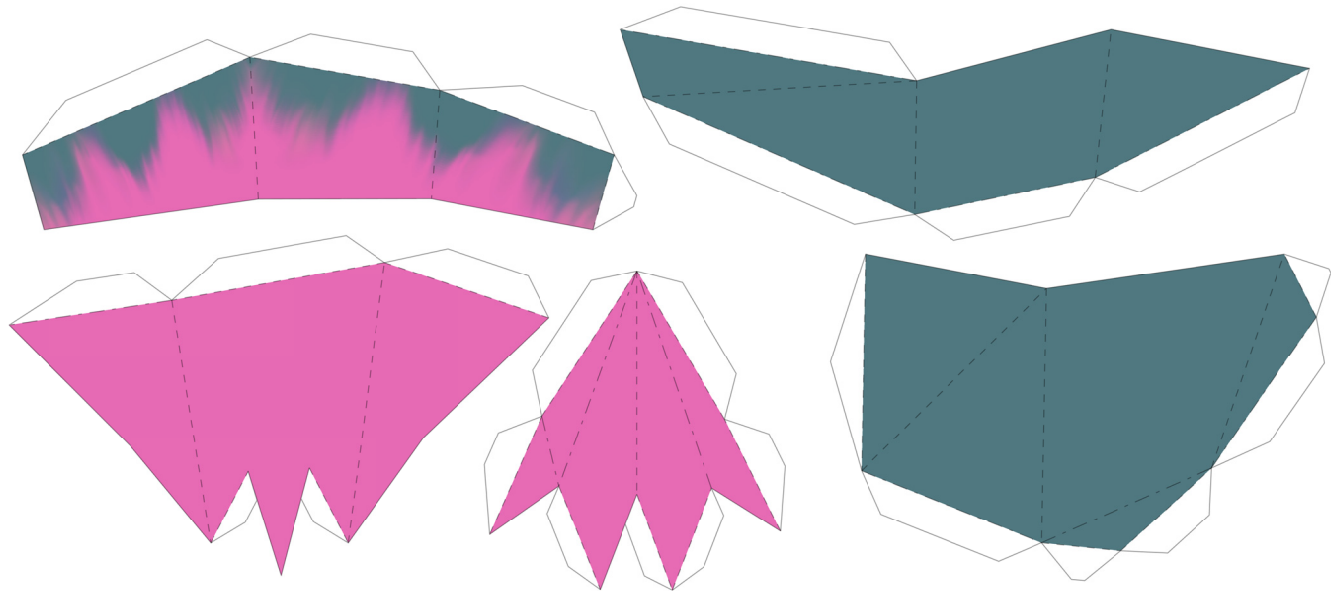
Build from the tips to the head



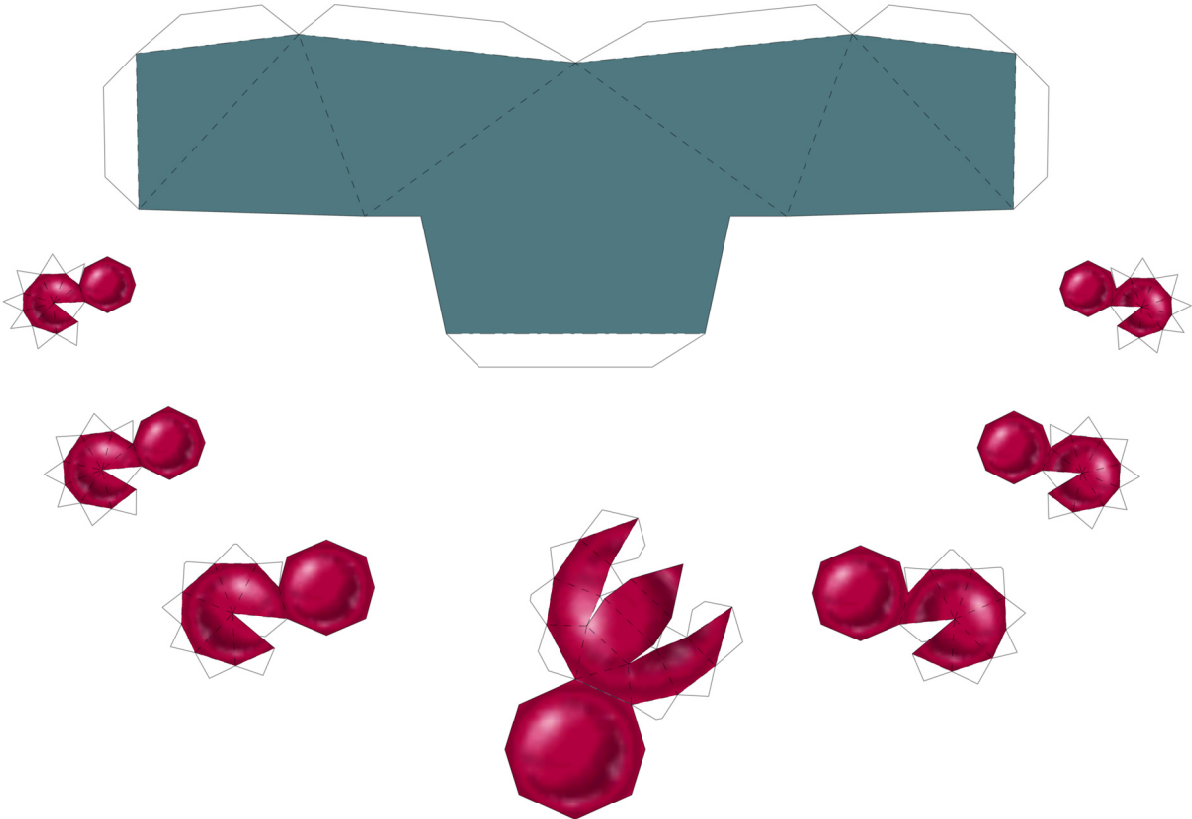
Right Middle Dreadlock



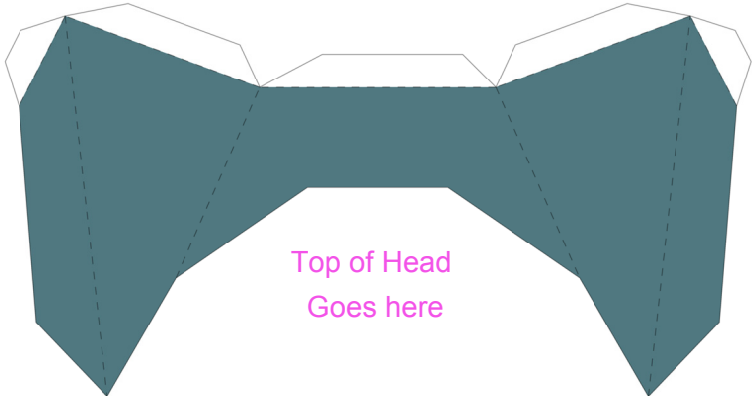
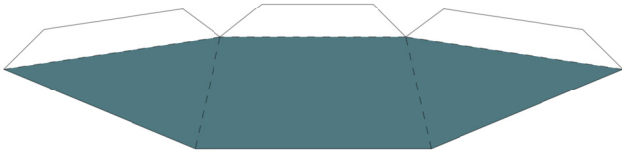
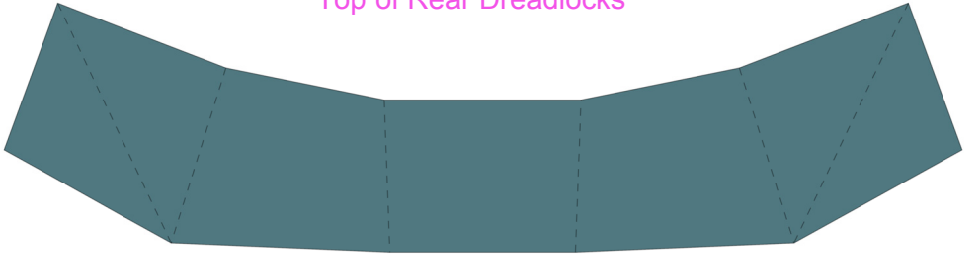
Left Middle Dreadlock



Base of Rear Dreadlocks



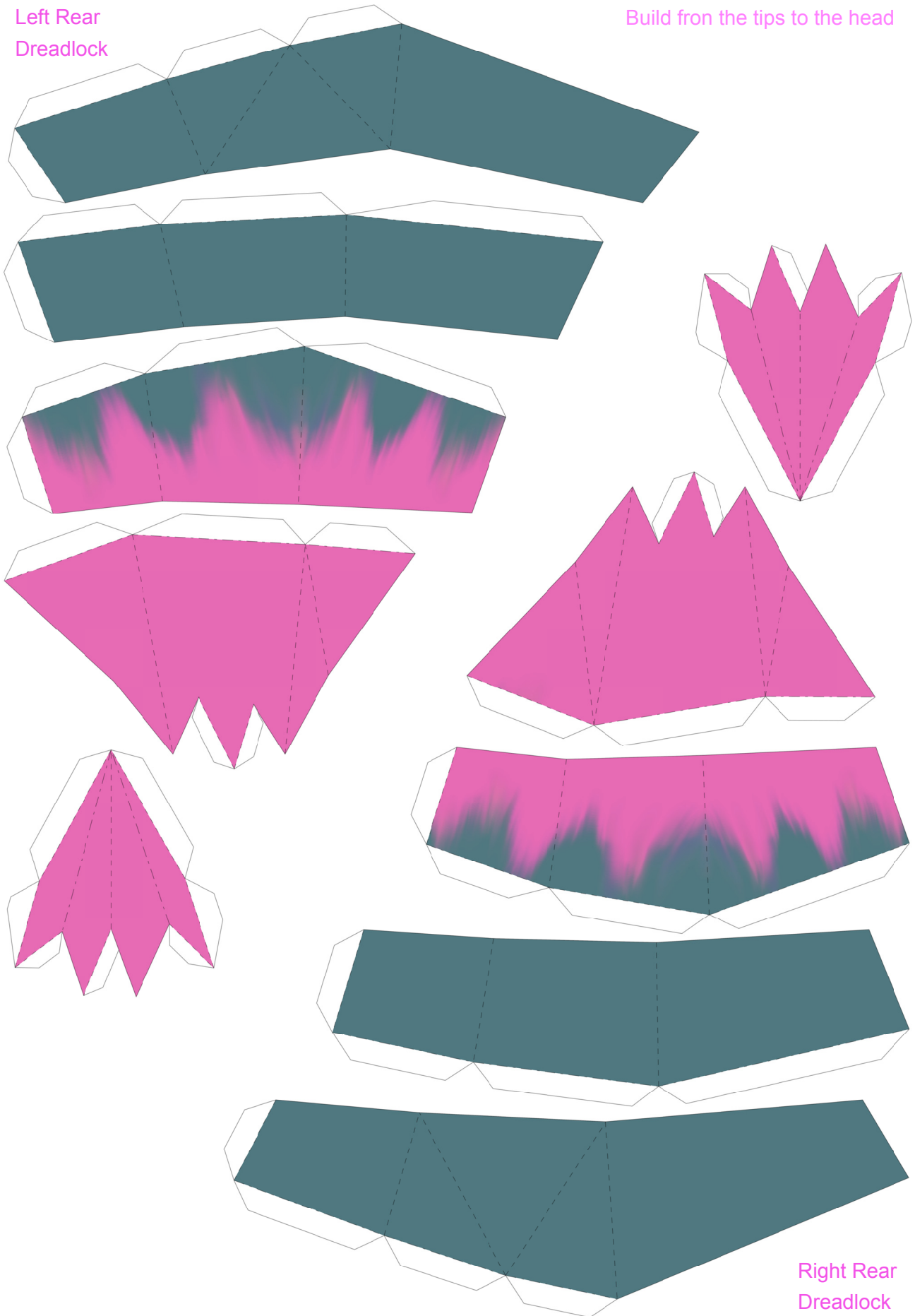
Top of Rear Dreadlocks



Top of Head
Goes here

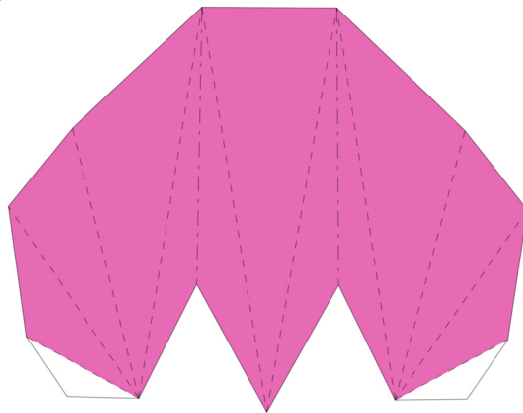
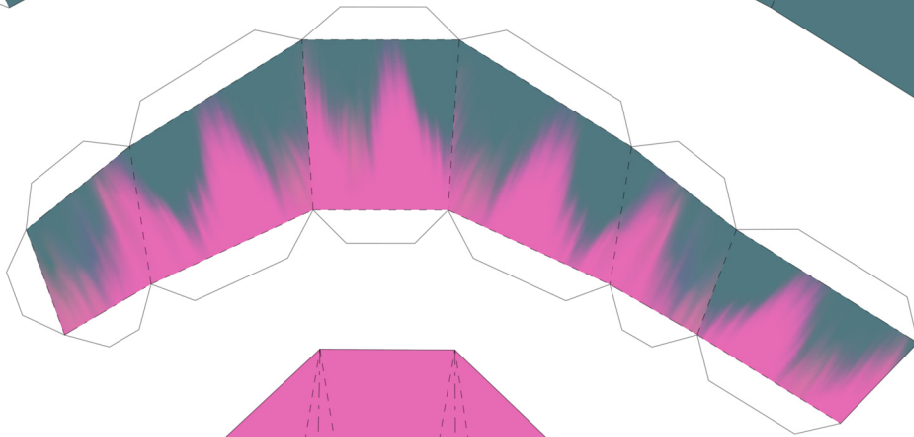
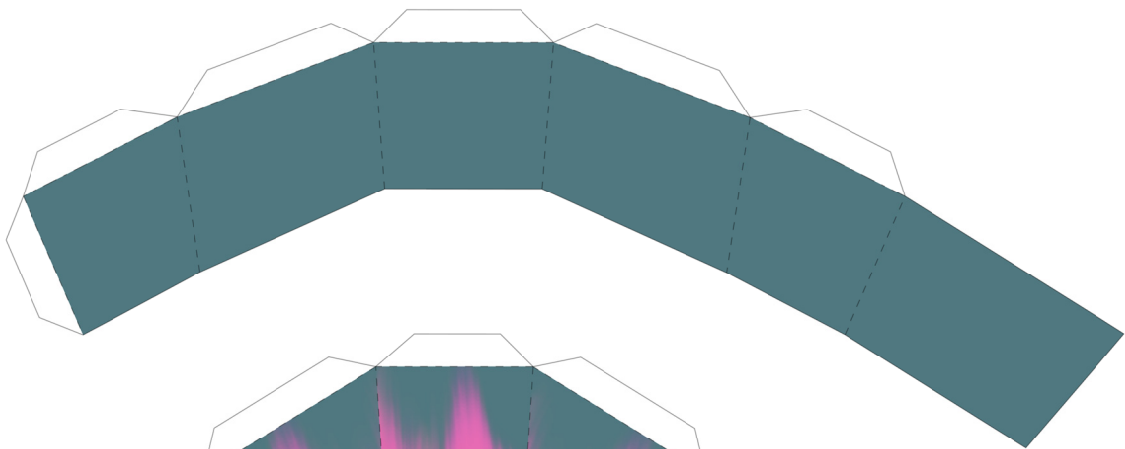
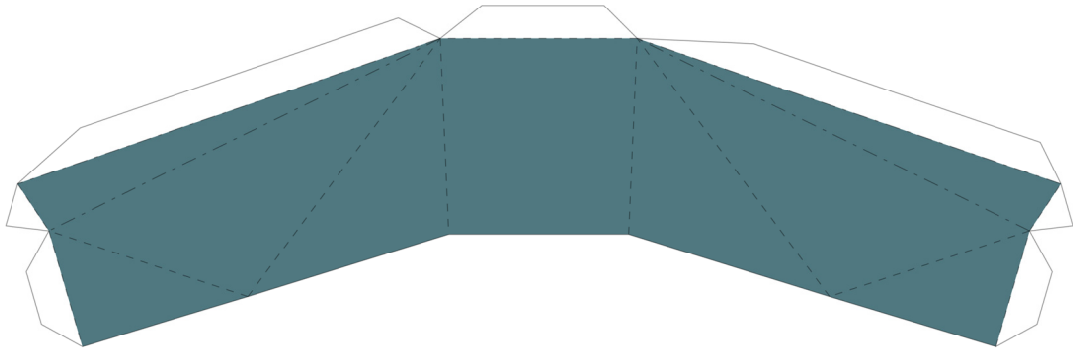
Left Rear
Dreadlock

Build from the tips to the head



Right Rear
Dreadlock

Build this dreadlock from the head to the tip!!!



Close model here by building this tip
and popping it on the rest of the
final dreadlock with a generous
amount of glue.

