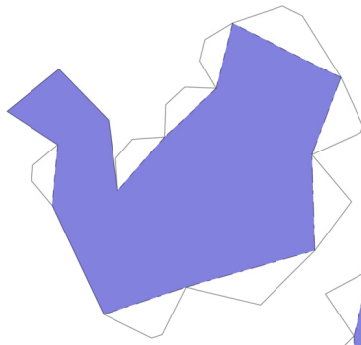


LILIEP

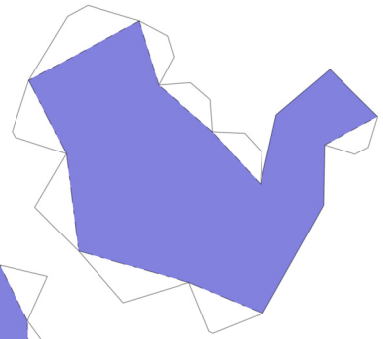
By Brandon



PaperPokés
www.pokemonpapercraft.com



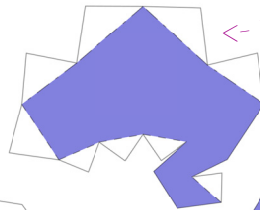
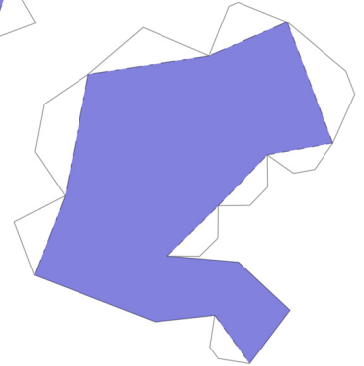
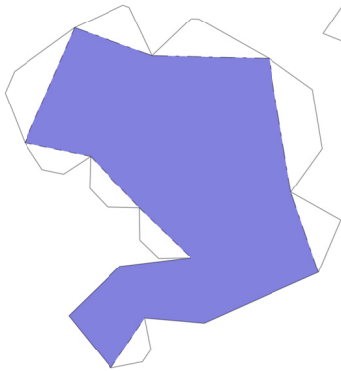
Left Legs



Right Legs



Tummy



<- Tail

Do not forget to glue counter weight
onto the inside of the tummy piece,
as close to the tail as possible

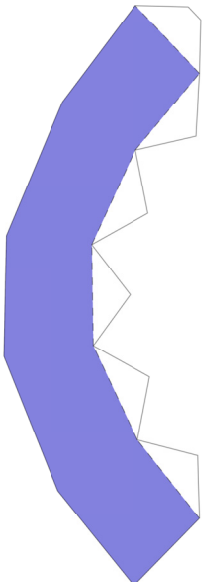
For stability and reinforcement,
insert a roll of scrap paper into the neck
once all three pieces are assembled.

Make the neck then
insert into the top
of neck base. Attach
top of neck base to the
rest of the neck base.

Make bottom of flower bulb.
Insert top of neck into the
bottom of flower bulb, then
continue making the rest of
the flower bulb.



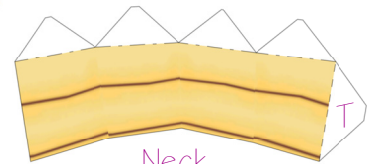
Top of
Body



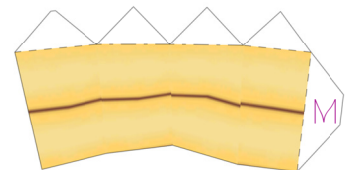
<- Neck Base ->



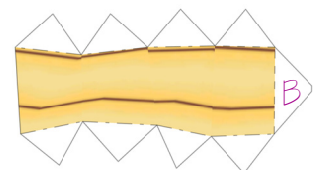
Top



Neck



M



B

Flower Bulb

Front

Left

Close model at Face.

Back

Right



