



# Ledyba

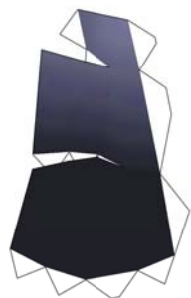
3D Editing by Brandon  
Template by Paperbuff



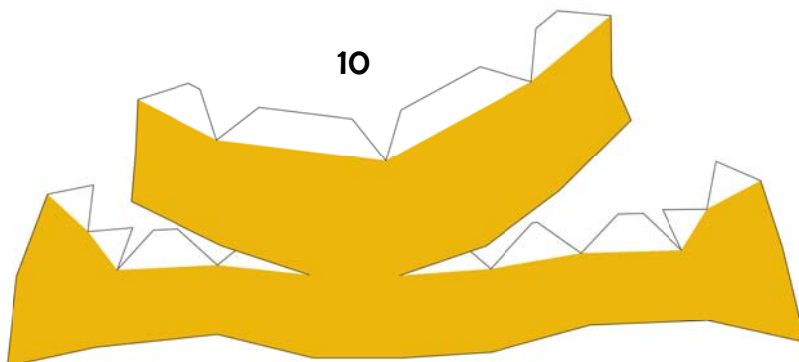
11

FACE

12



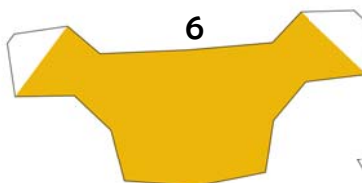
10



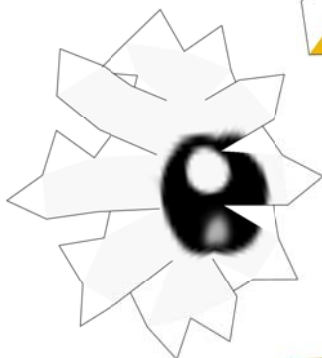
9



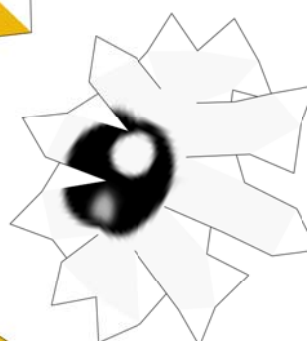
6



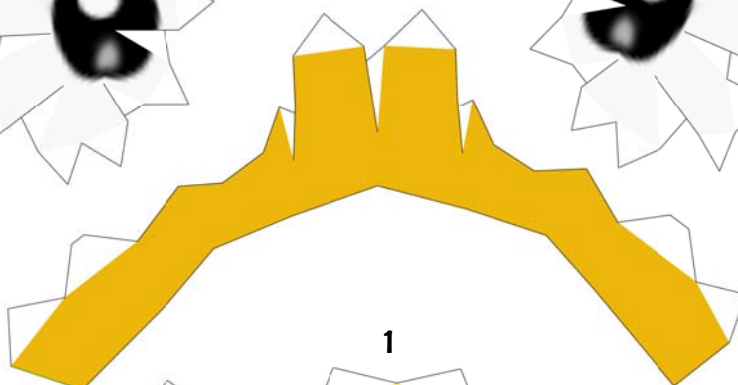
7



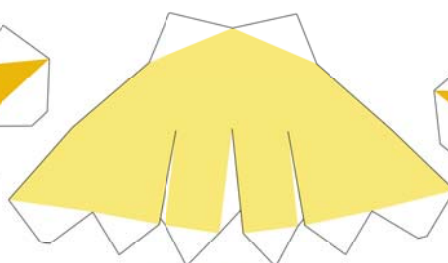
8



5



1



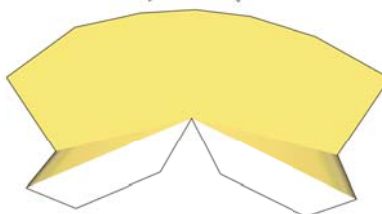
2

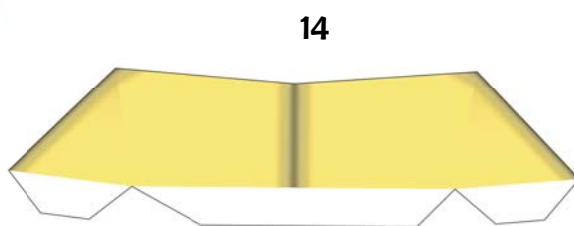
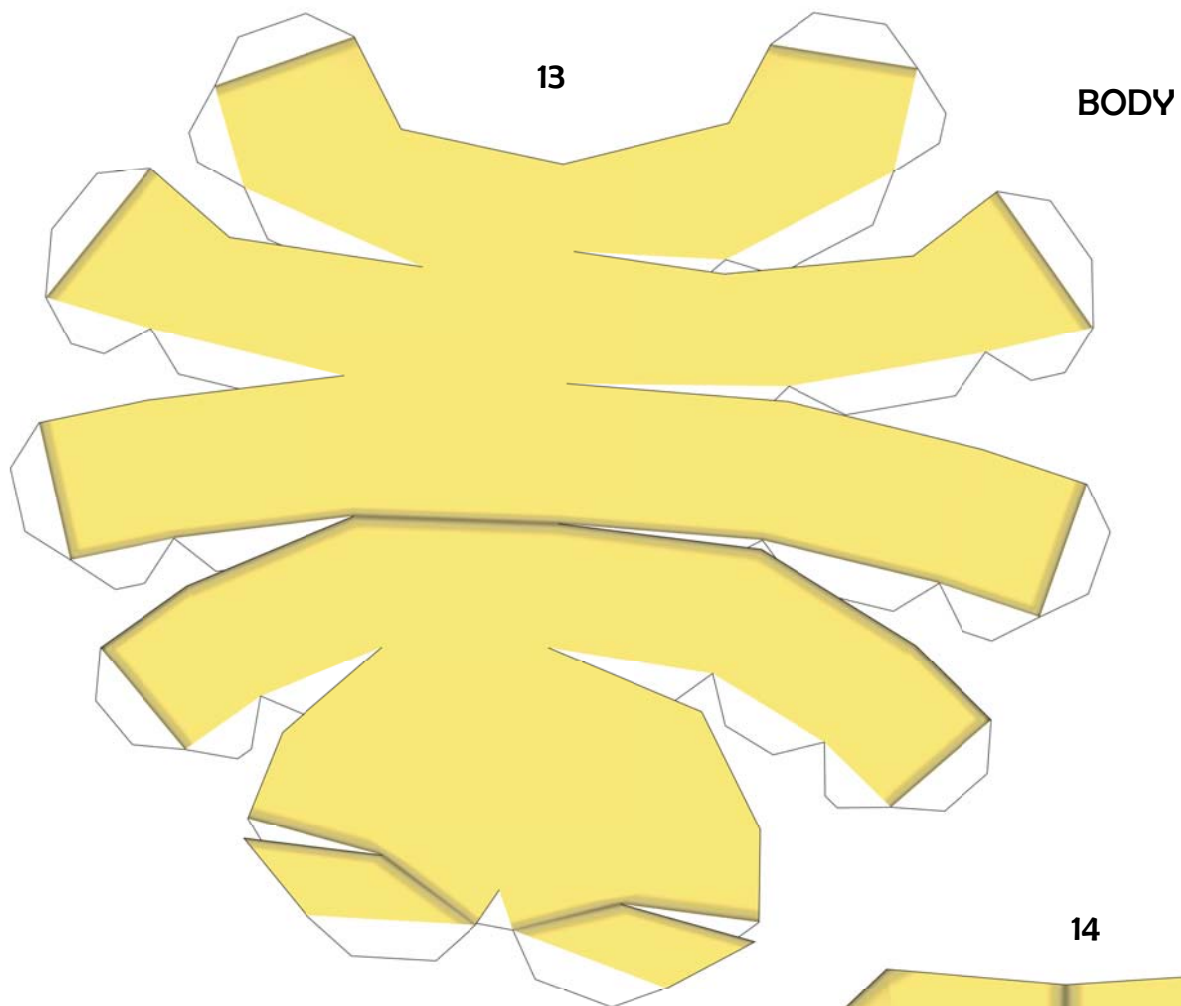


3

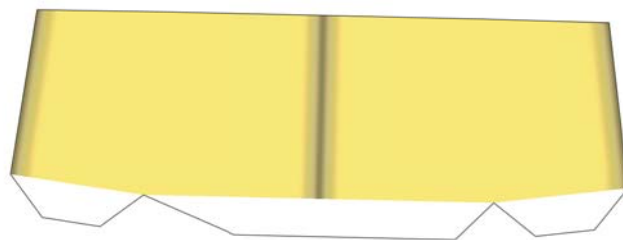


4



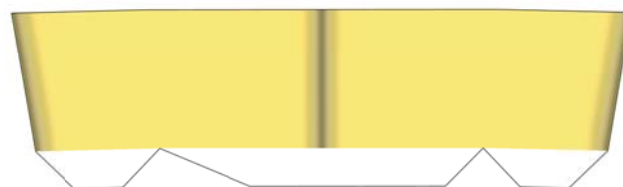


15

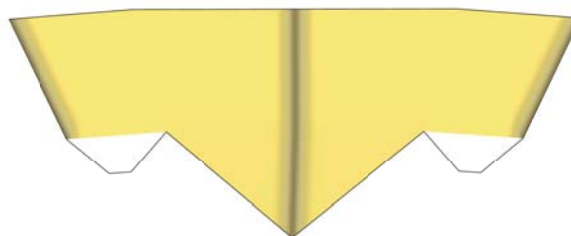


BELLY

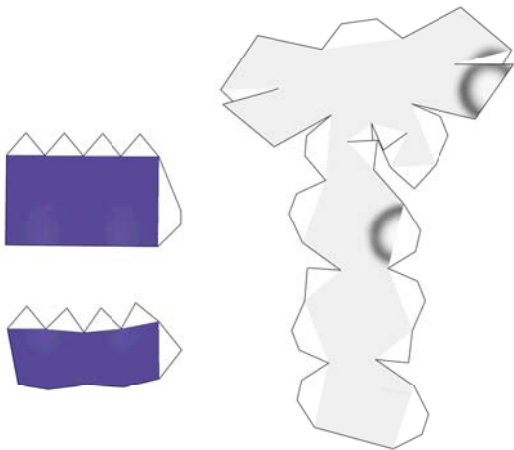
16



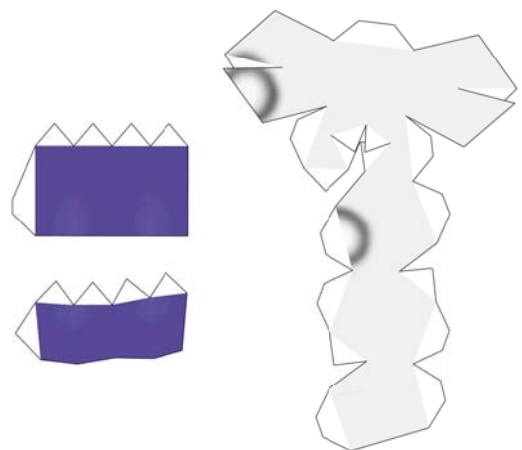
17



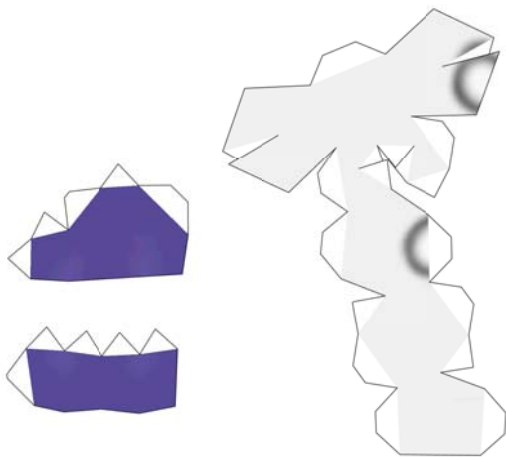
## RIGHT LEGS



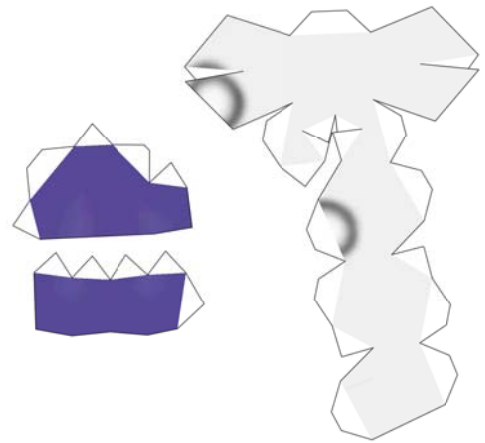
## LEFT LEGS



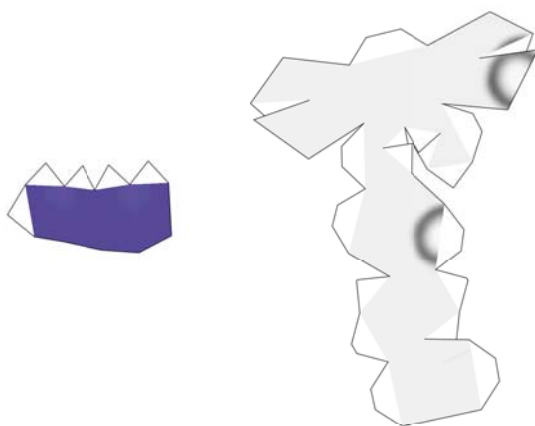
## FRONT



## MIDDLE



## REAR



### BUILDING THE FEET:

Start with the ball feet then attach the leg pieces.

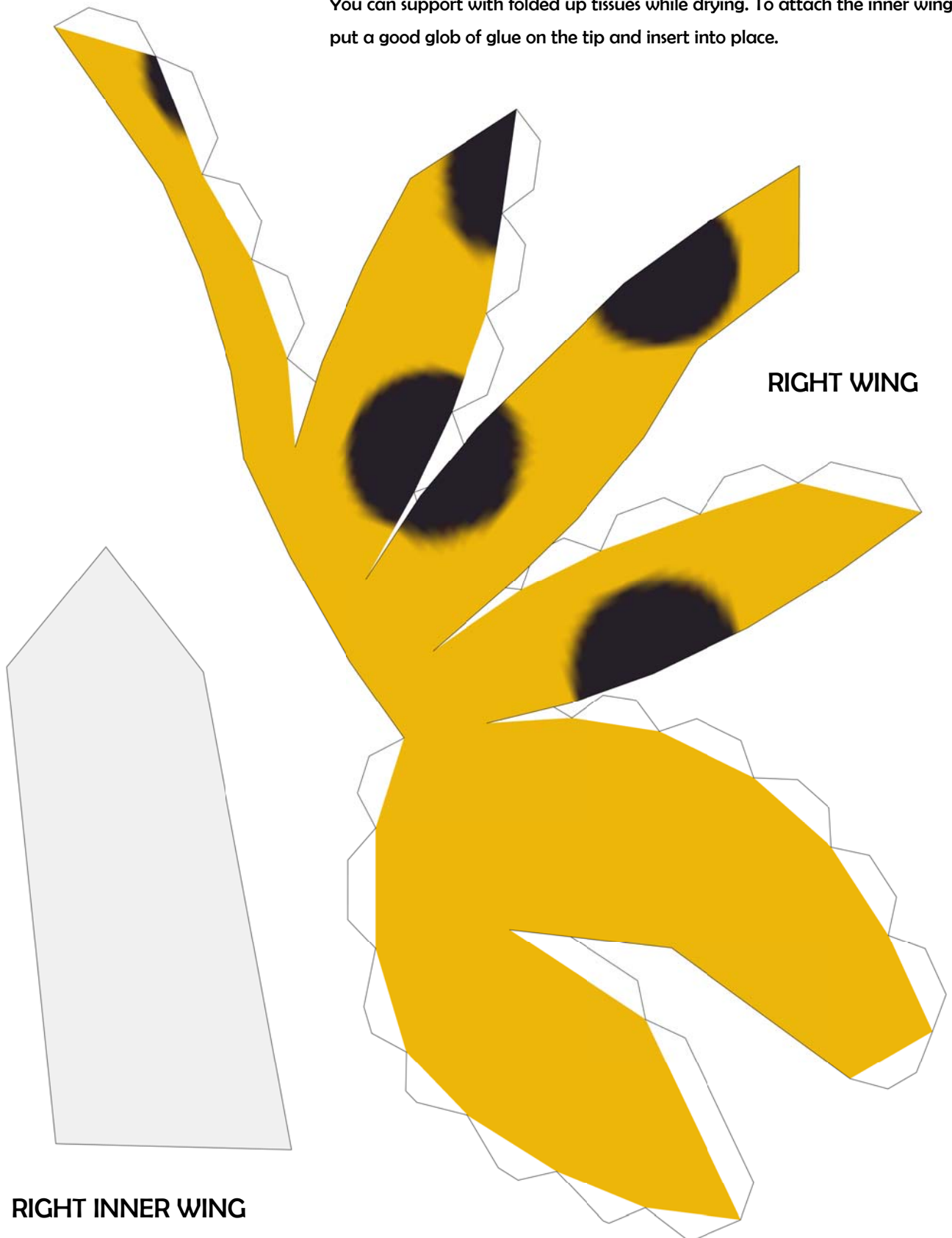
Glue onto the body using tabs.

### BUILDING THE WINGS:

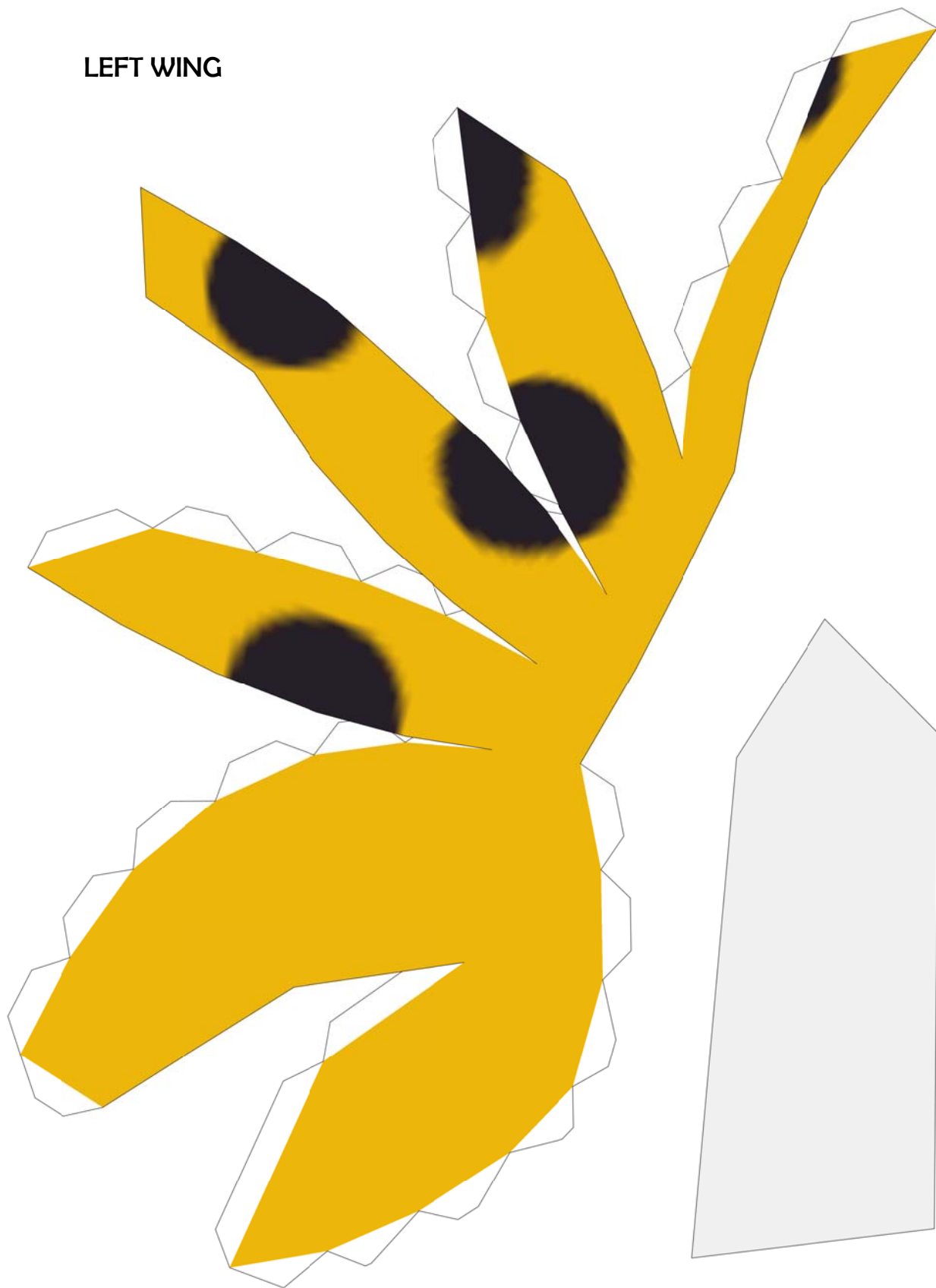
Assemble the outer wings. Shape the inner wings by cutting them into long ovals.

I recommend gluing the outer wings first. Use good glue!

You can support with folded up tissues while drying. To attach the inner wings, put a good glob of glue on the tip and insert into place.



**LEFT WING**



**LEFT INNER WING**