



Ledyba

3D Editing by Brandon
Template by Paperbuff



11

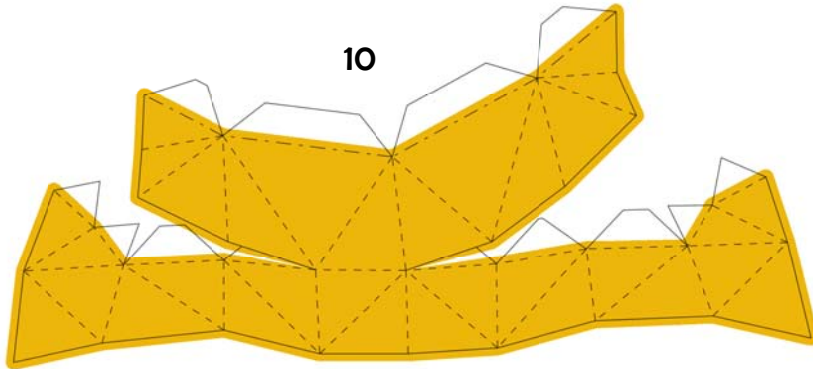


FACE

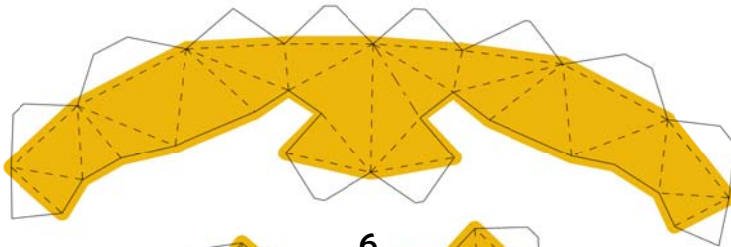
12



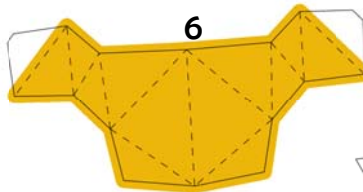
10



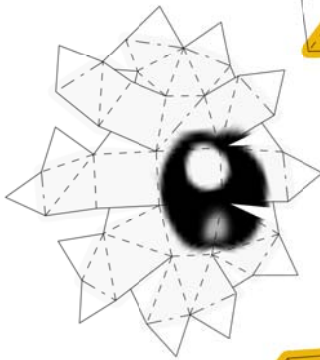
9



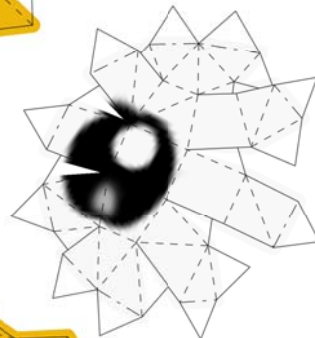
6



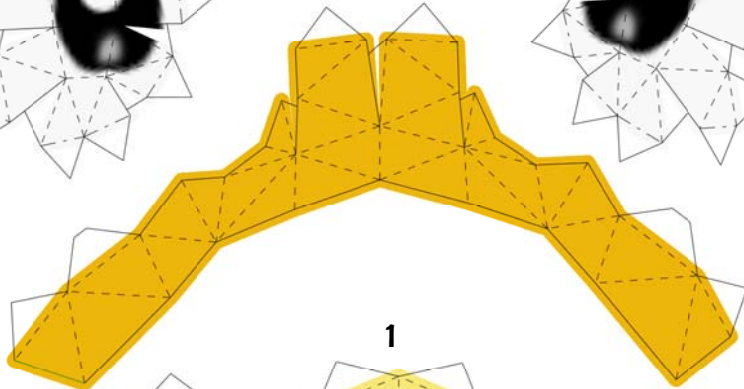
7



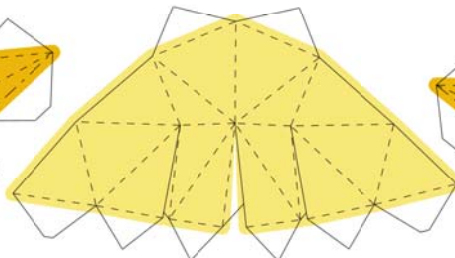
8



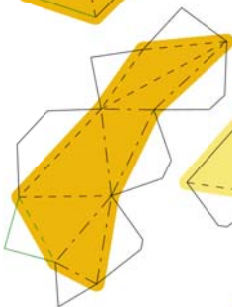
5



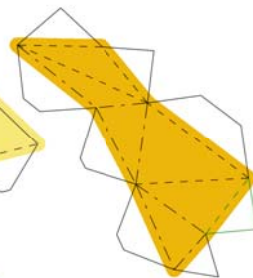
1



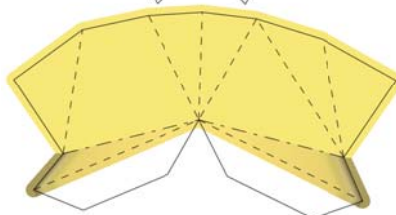
2

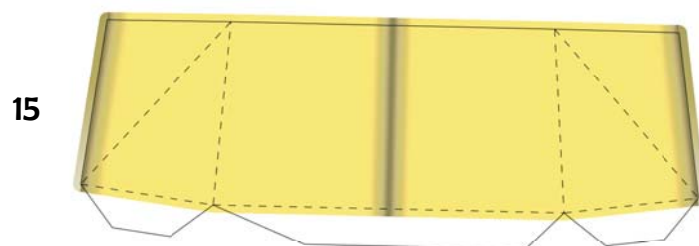
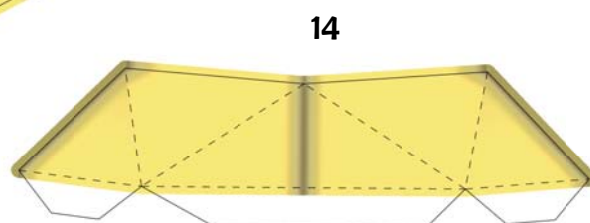
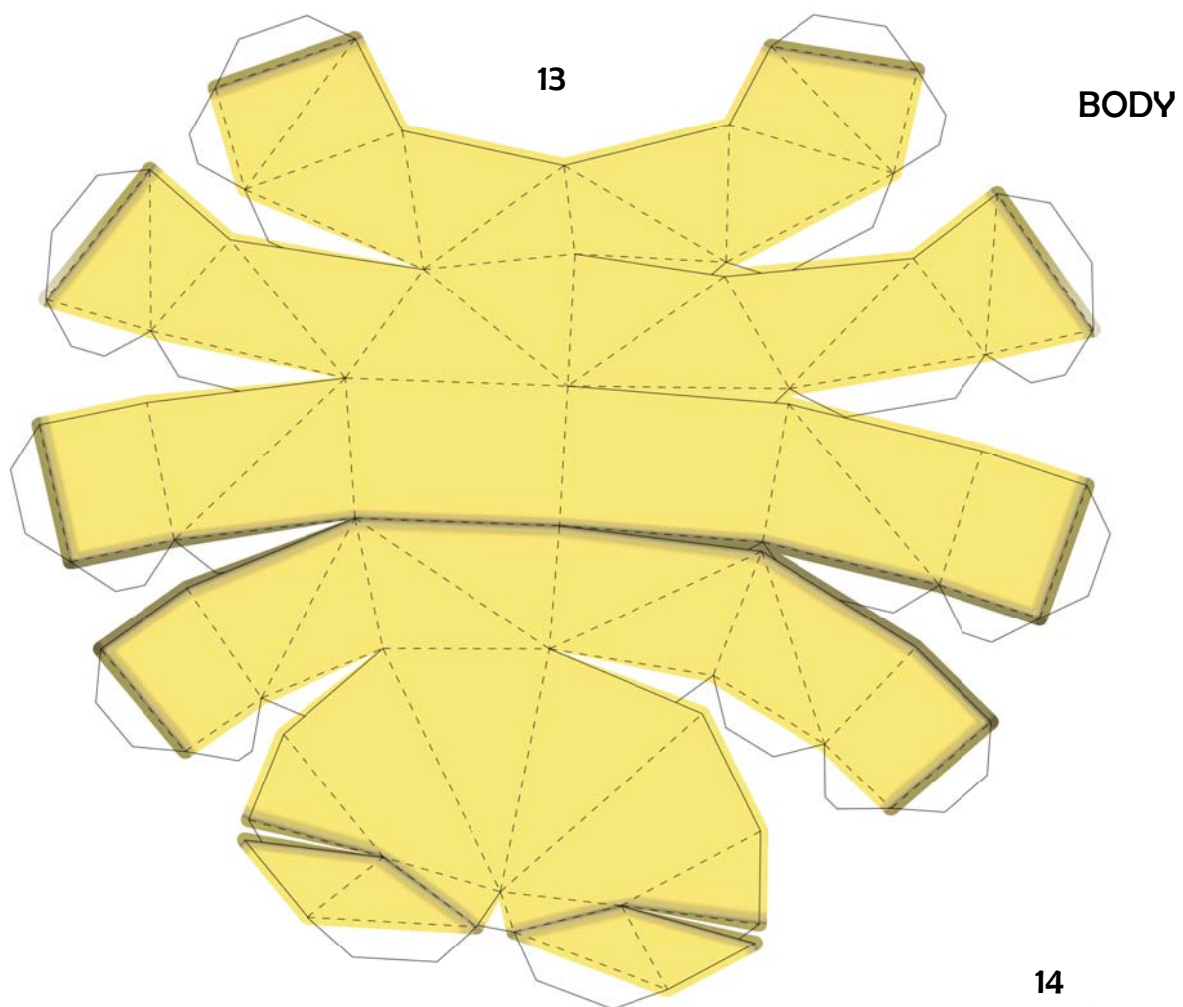


3

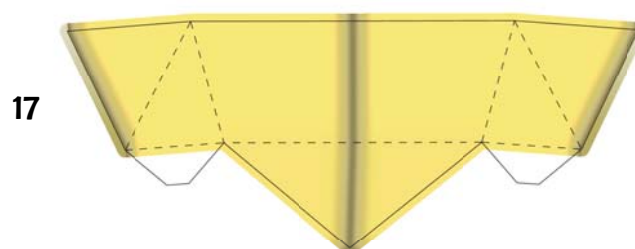
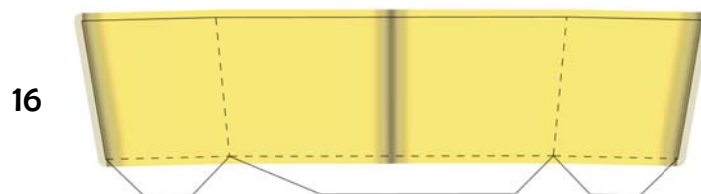


4





BELLY



RIGHT LEGS

LEFT LEGS

FRONT

MIDDLE

REAR

BUILDING THE FEET:

Start with the ball feet then attach the leg pieces.

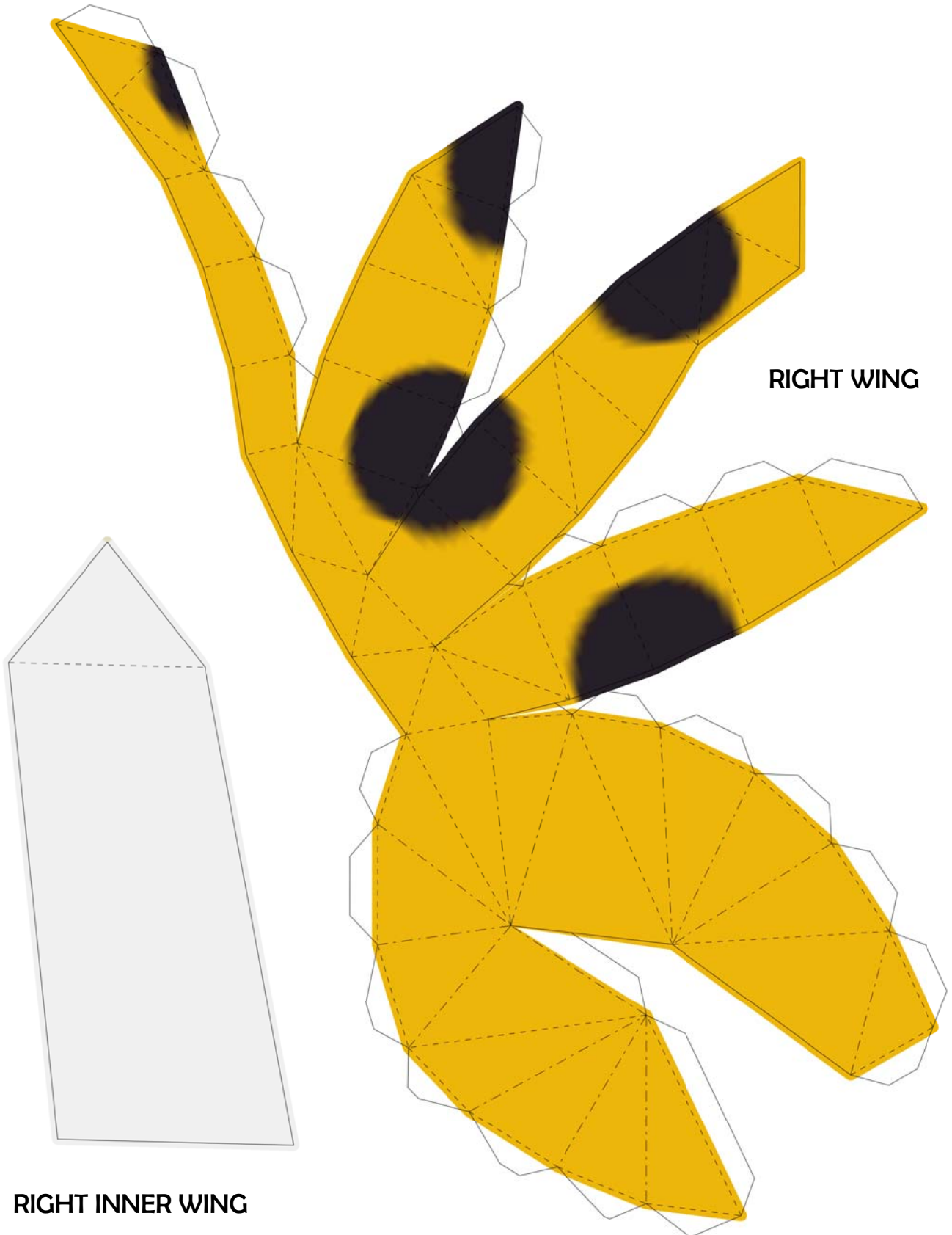
Glue onto the body using tabs.

BUILDING THE WINGS:

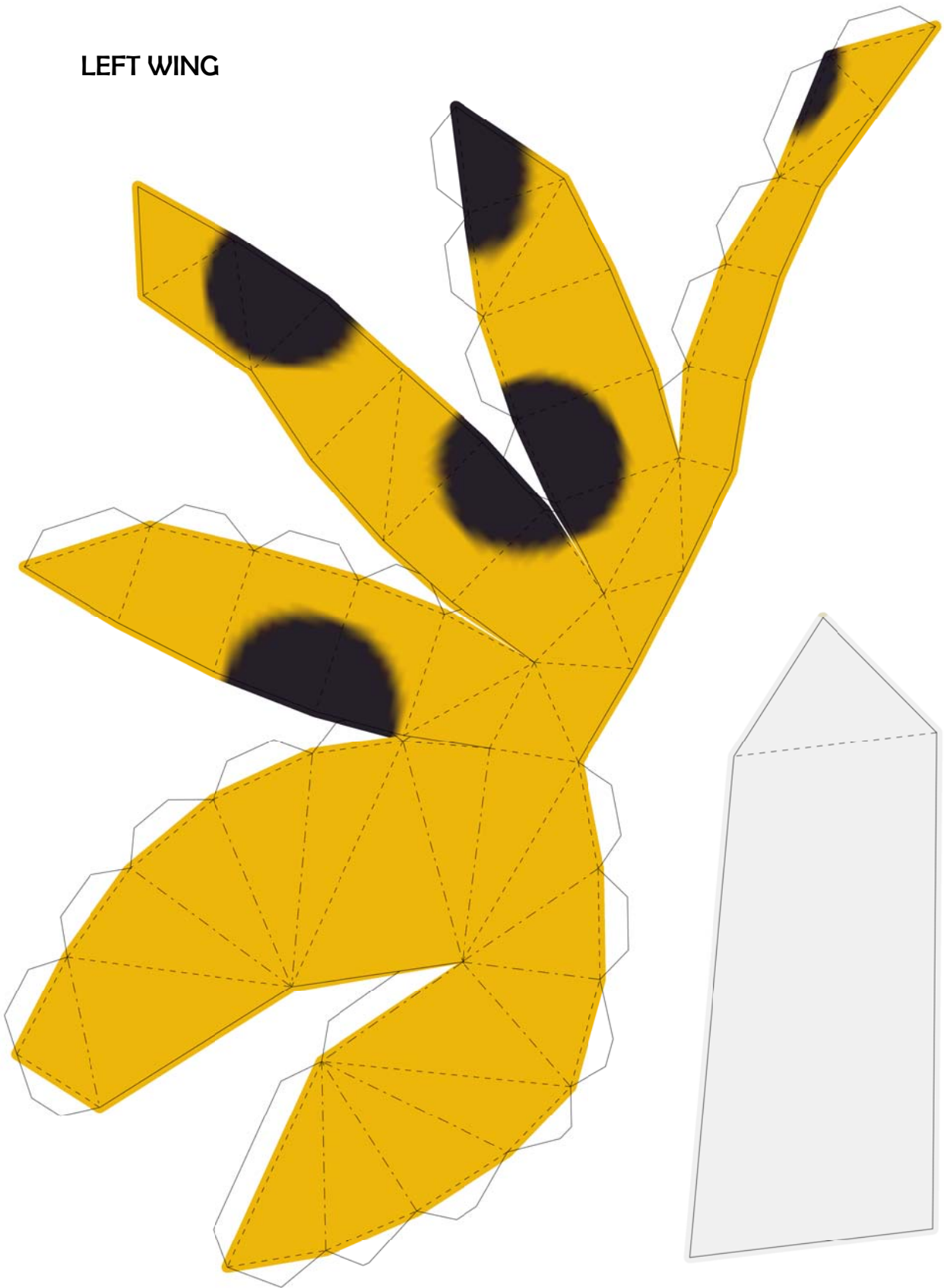
Assemble the outer wings. Shape the inner wings by cutting them into long ovals.

I recommend gluing the outer wings first. Use good glue!

You can support with folded up tissues while drying. To attach the inner wings, put a good glob of glue on the tip and insert into place.



LEFT WING



LEFT INNER WING