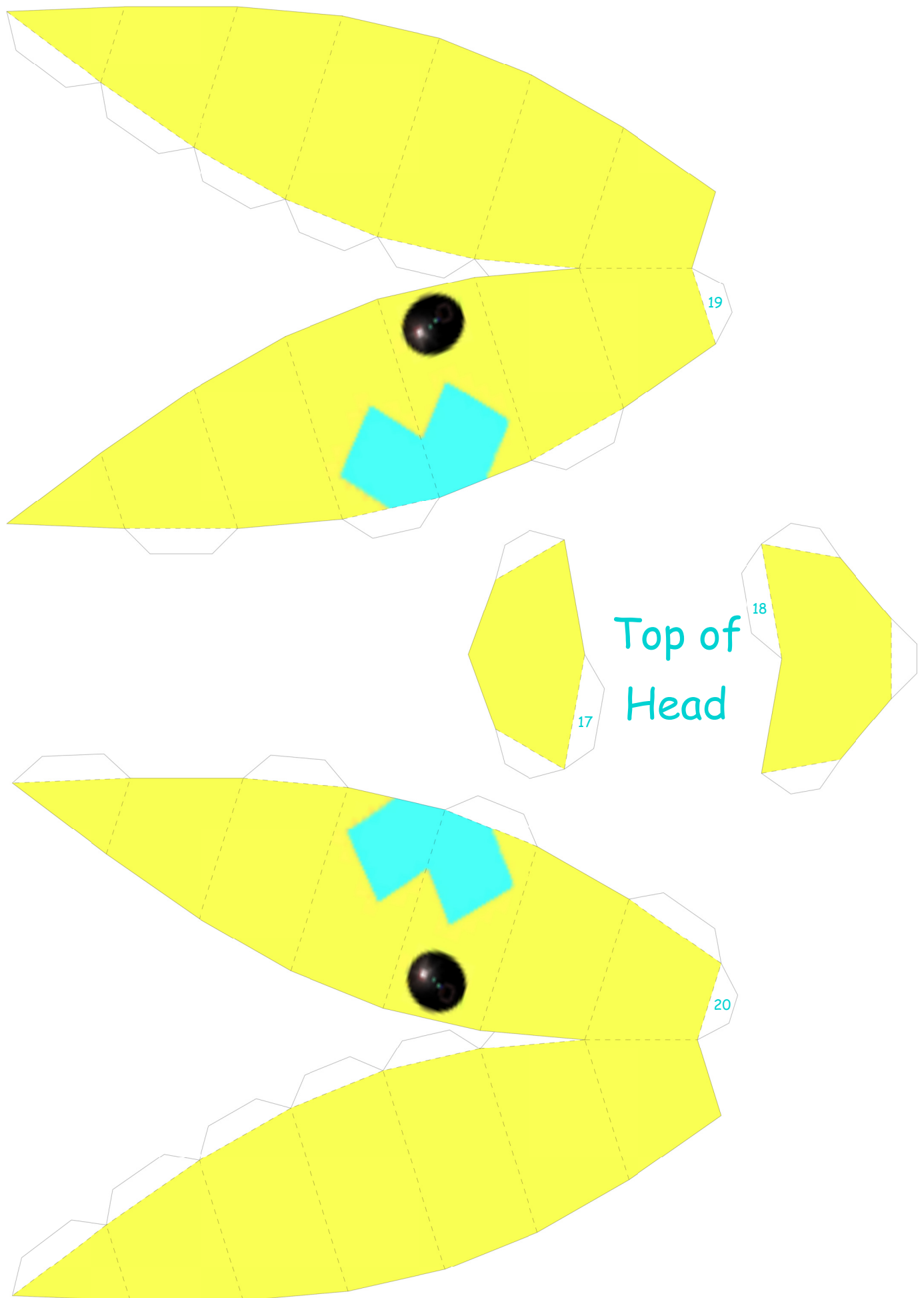


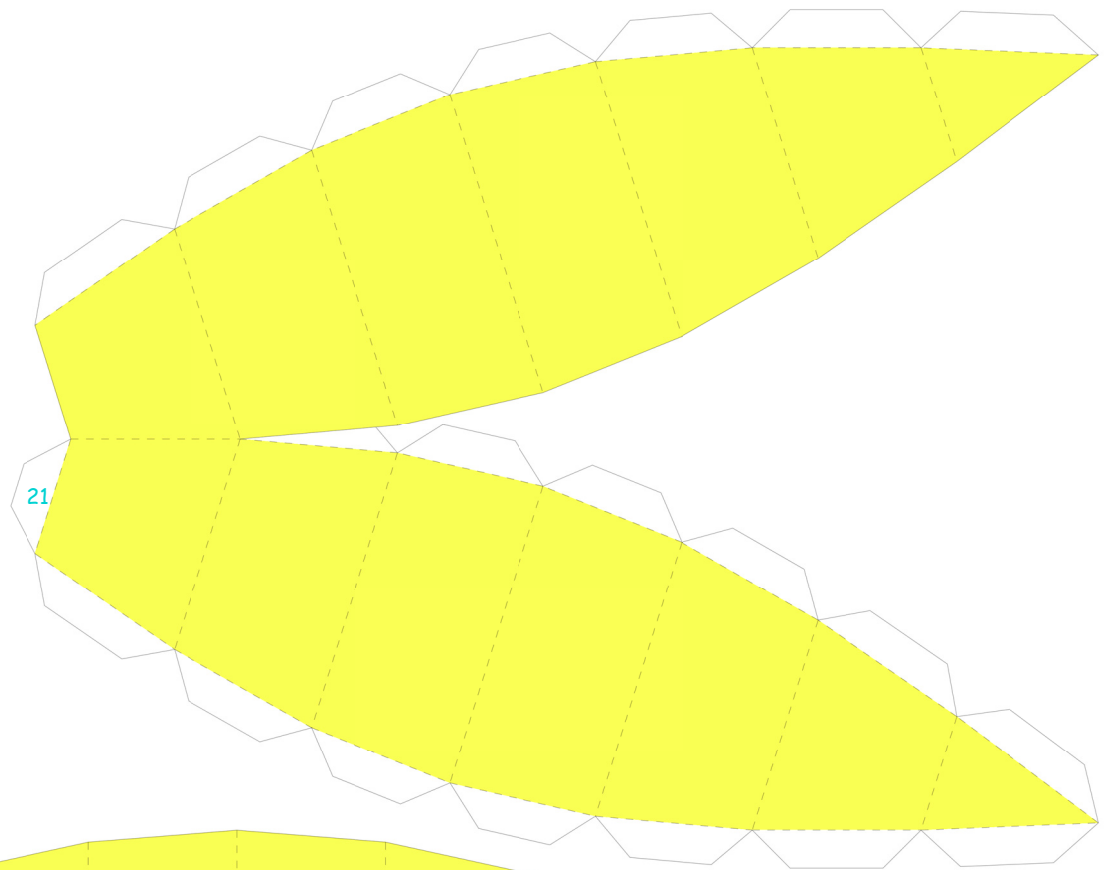
drifloon

By PMF



PaperPokés
www.pokemonpapercraft.com

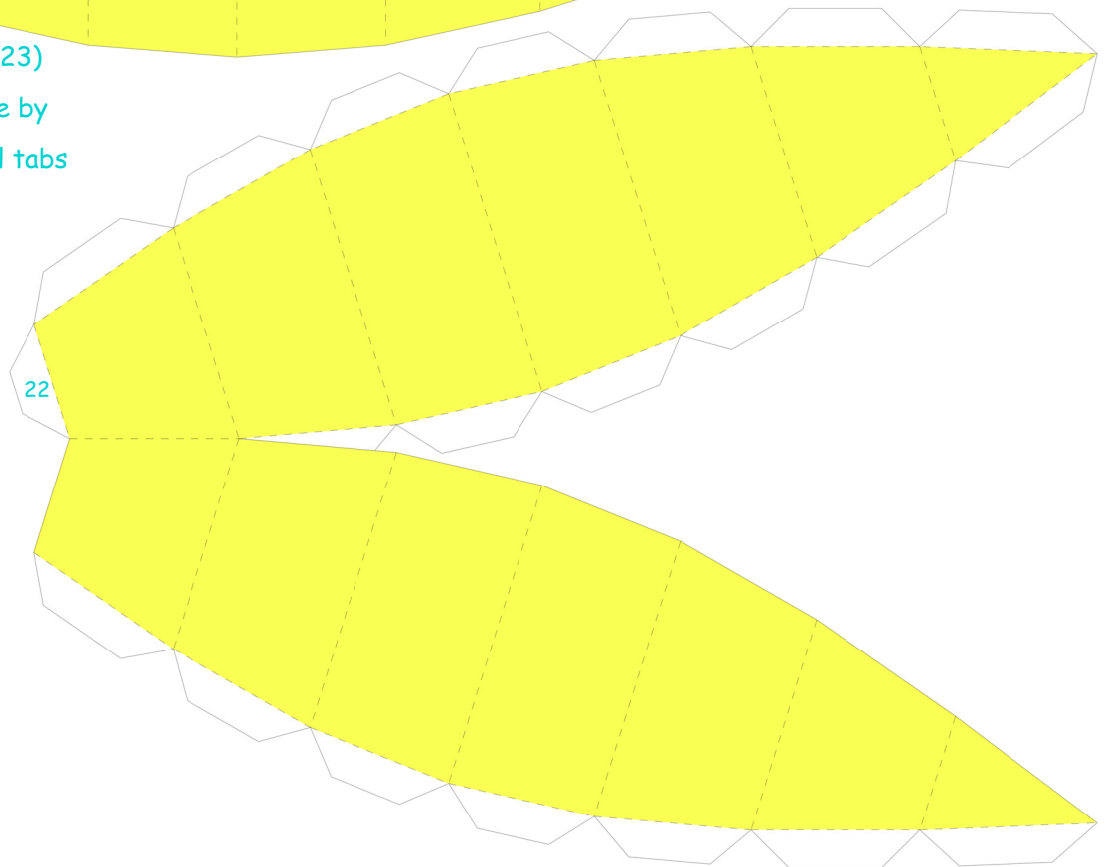




21

23

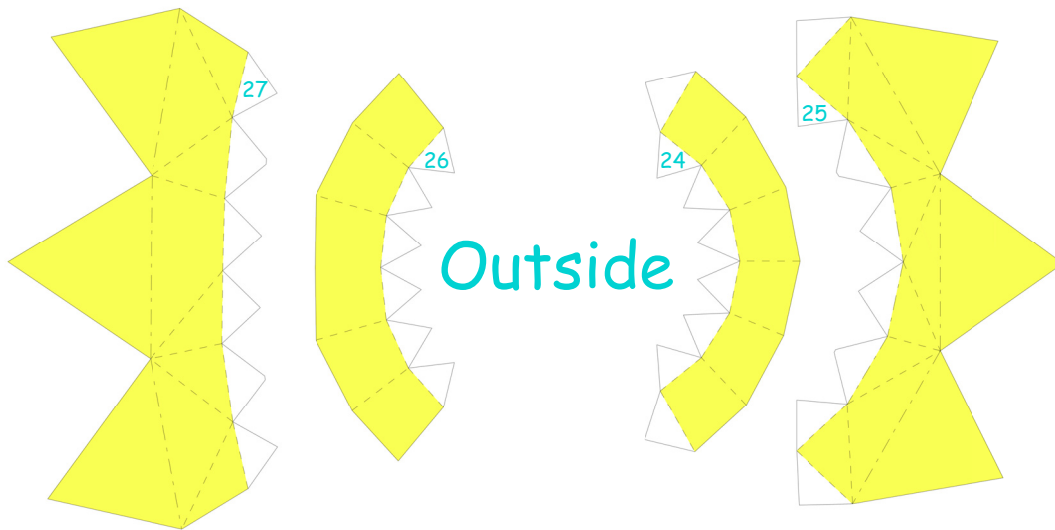
- Close head here (no.23)
- Glue 2 tabs at a time by matching horizontal tabs
- Use tweezers



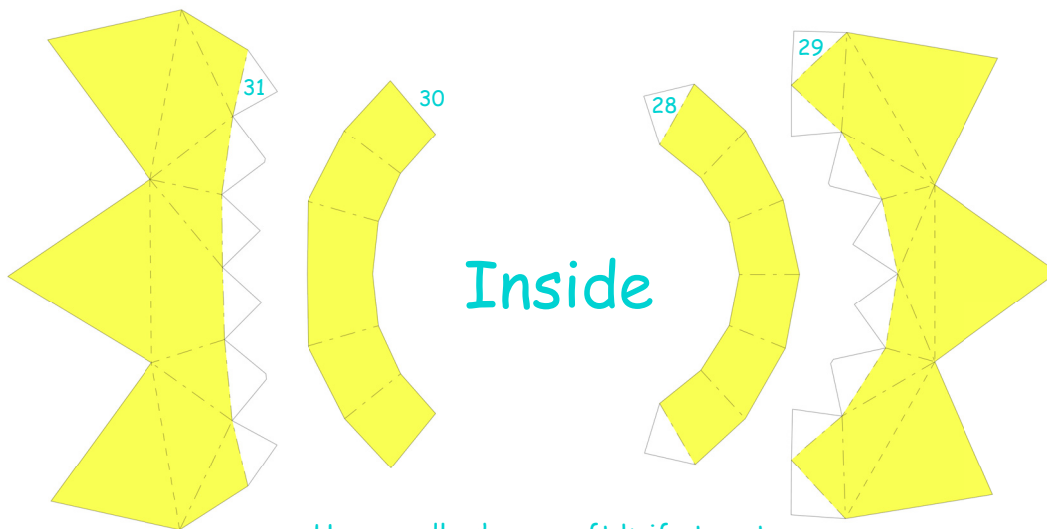
22

32

34

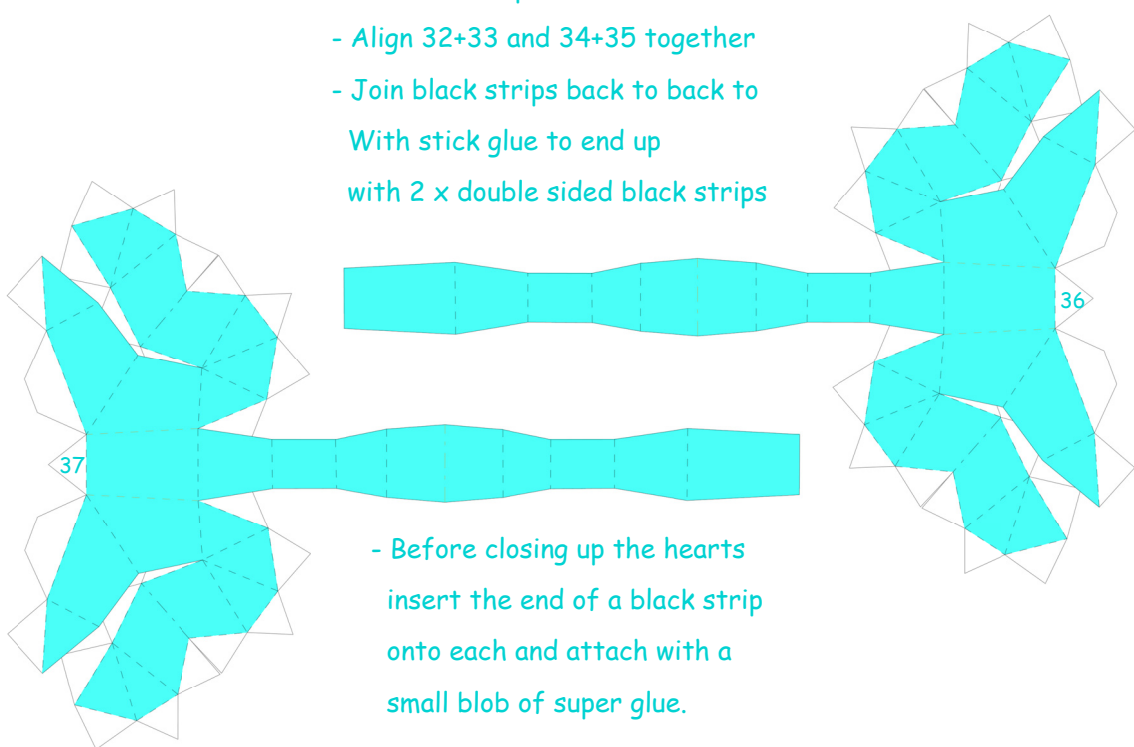


33

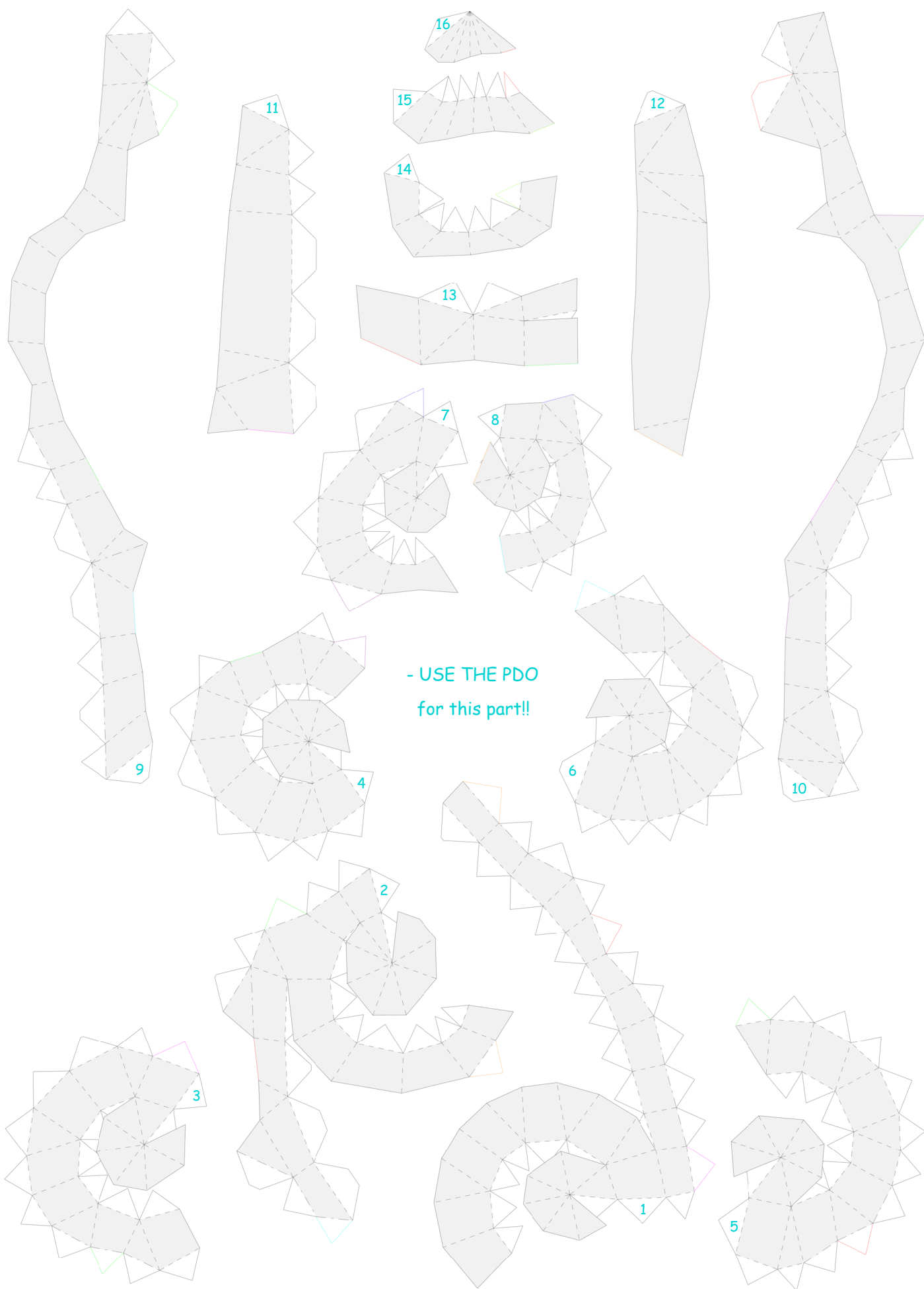


35

- Use a really sharp craft knife to cut out black strips.
- Align 32+33 and 34+35 together
- Join black strips back to back to With stick glue to end up with 2 x double sided black strips



- Before closing up the hearts insert the end of a black strip onto each and attach with a small blob of super glue.



- USE THE PDO
for this part!!