

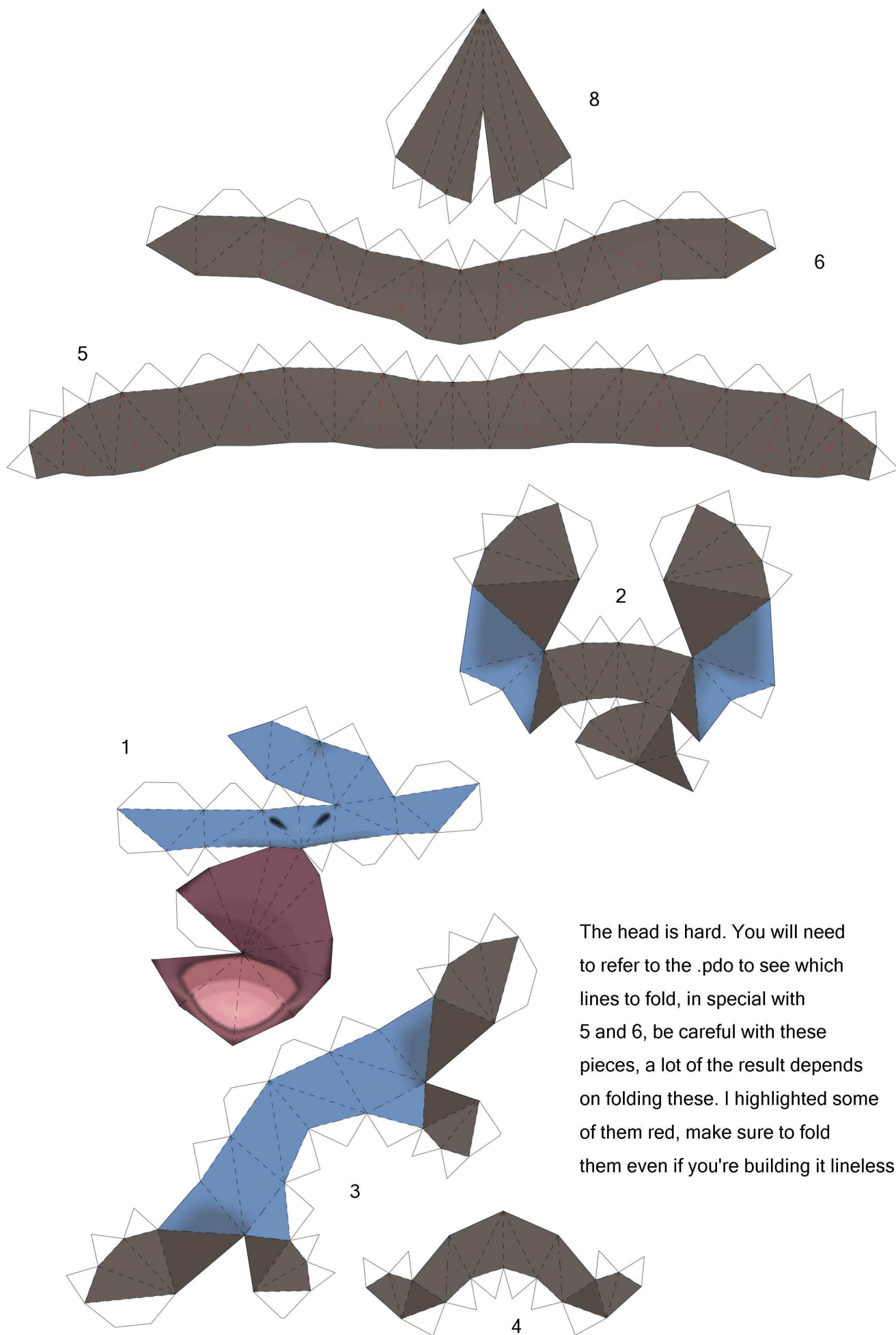


Deino

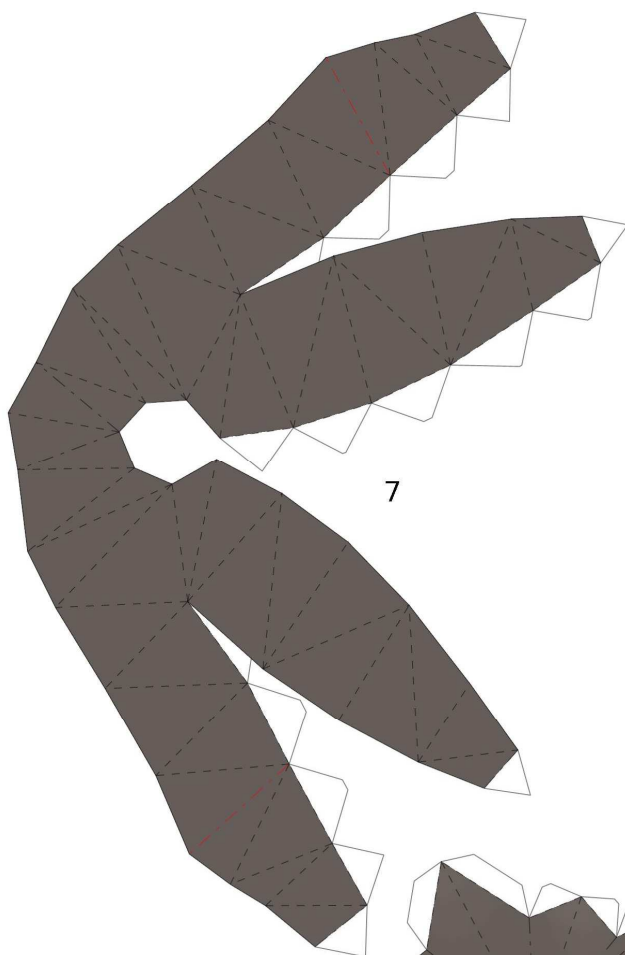
By Brandon

Build by LuIS

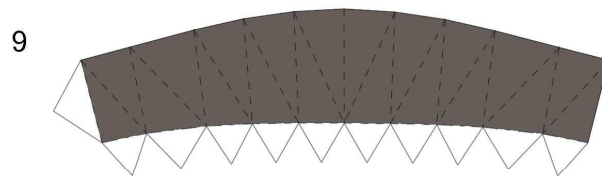
Paper Pokés
www.pokemonpapercraft.net



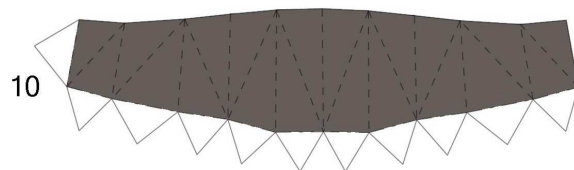
The head is hard. You will need to refer to the .pdo to see which lines to fold, in special with 5 and 6, be careful with these pieces, a lot of the result depends on folding these. I highlighted some of them red, make sure to fold them even if you're building it lineless.



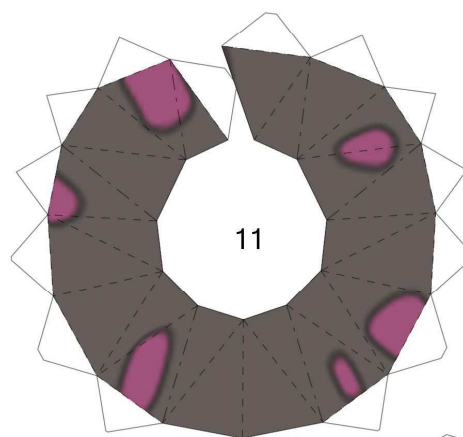
7



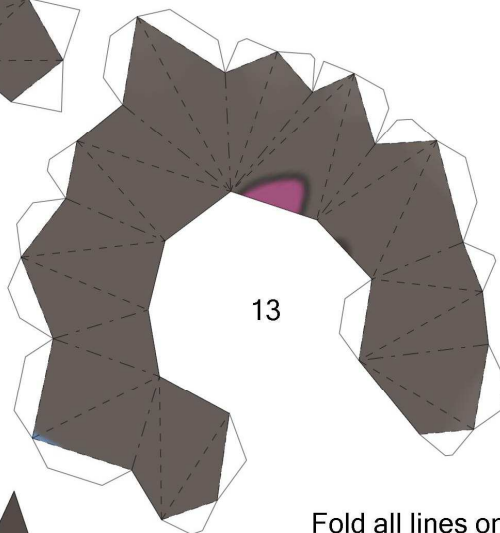
9



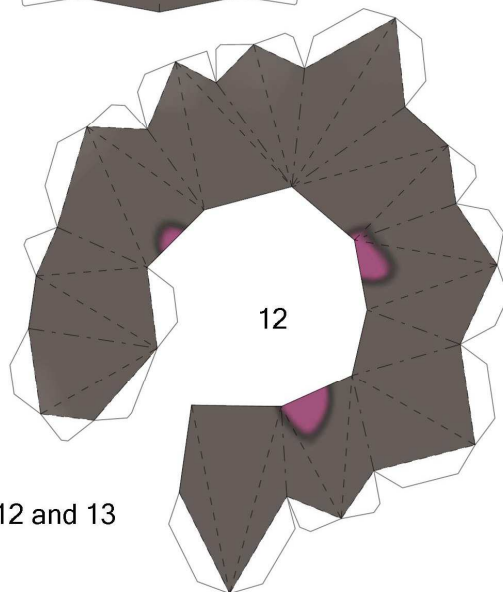
10



11

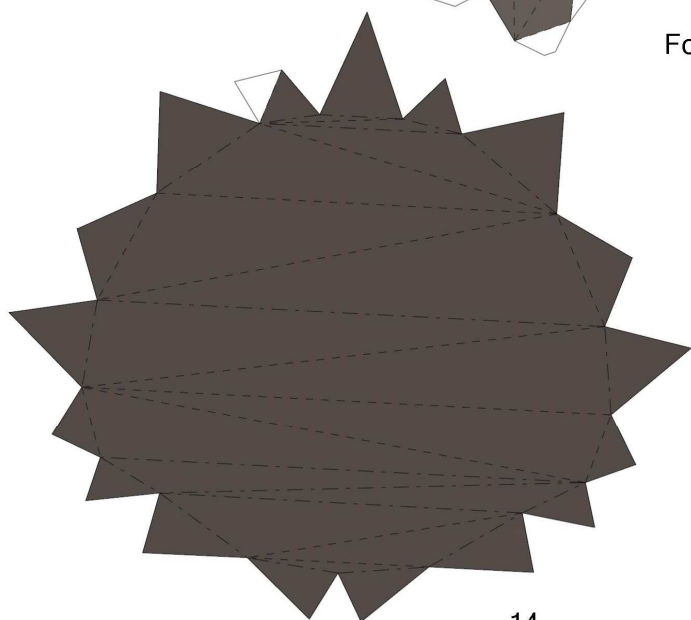


13

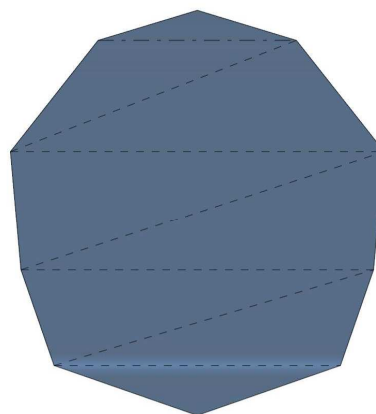


12

Fold all lines on 12 and 13



14



37

Closing the head is also hard, take your time there.

