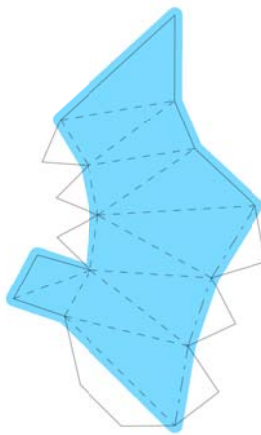
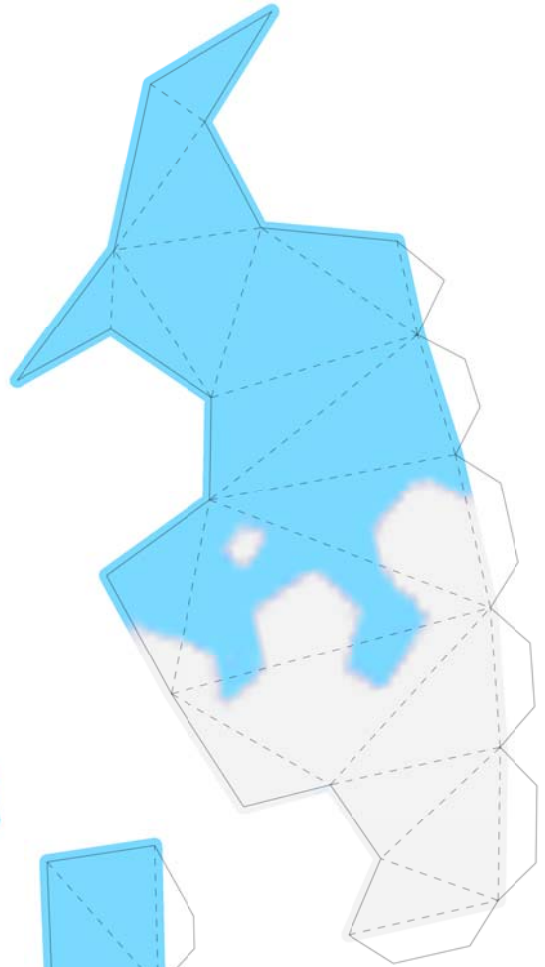
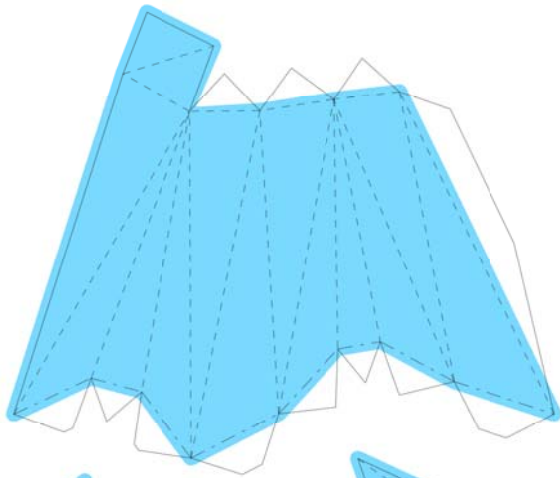


# Corsola

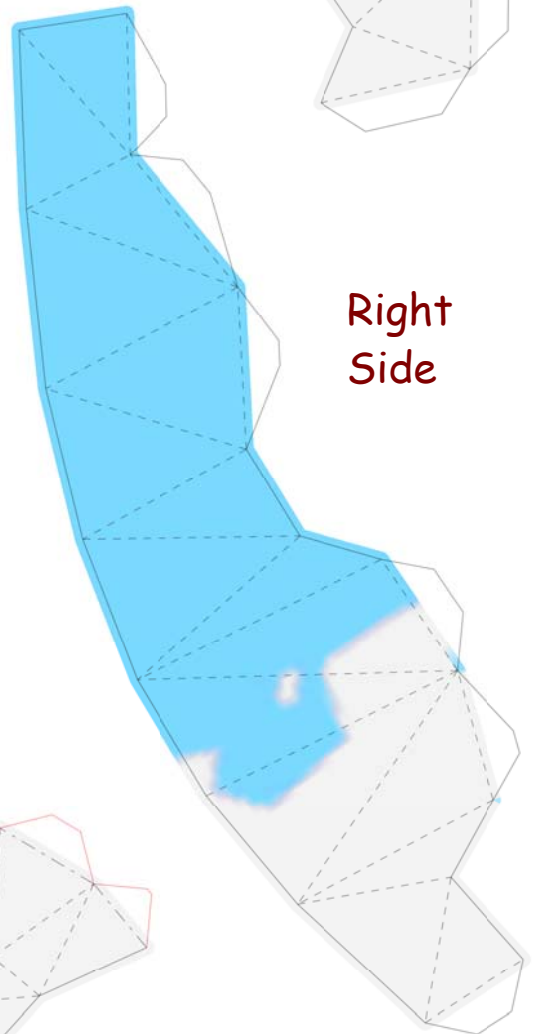
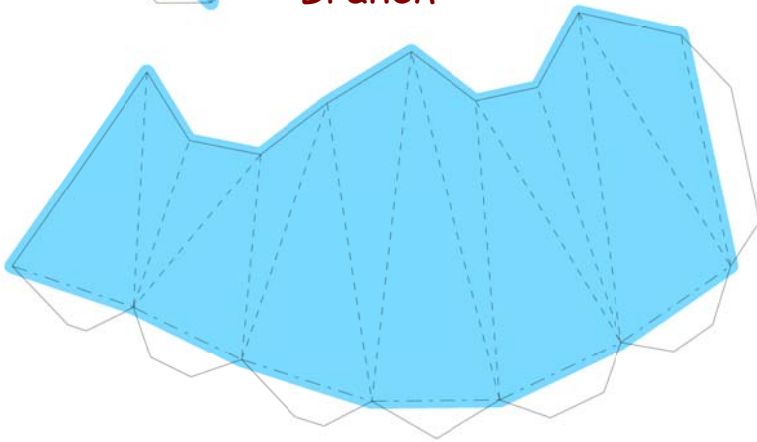
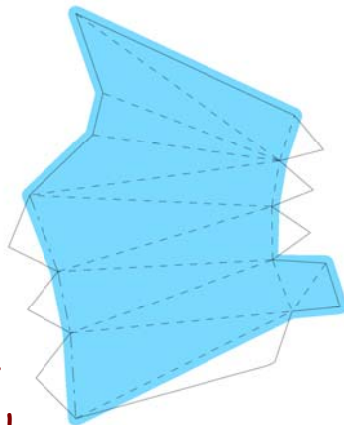
By Brandon



**Paper Pokés**  
*paperpokes.blogspot.com*

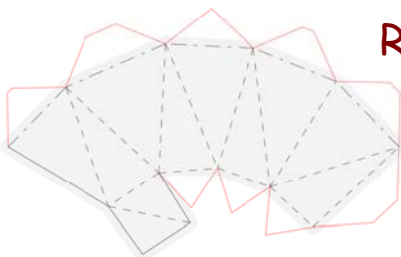


Right  
Front  
Branch



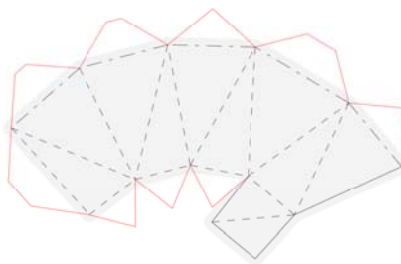
Right  
Side

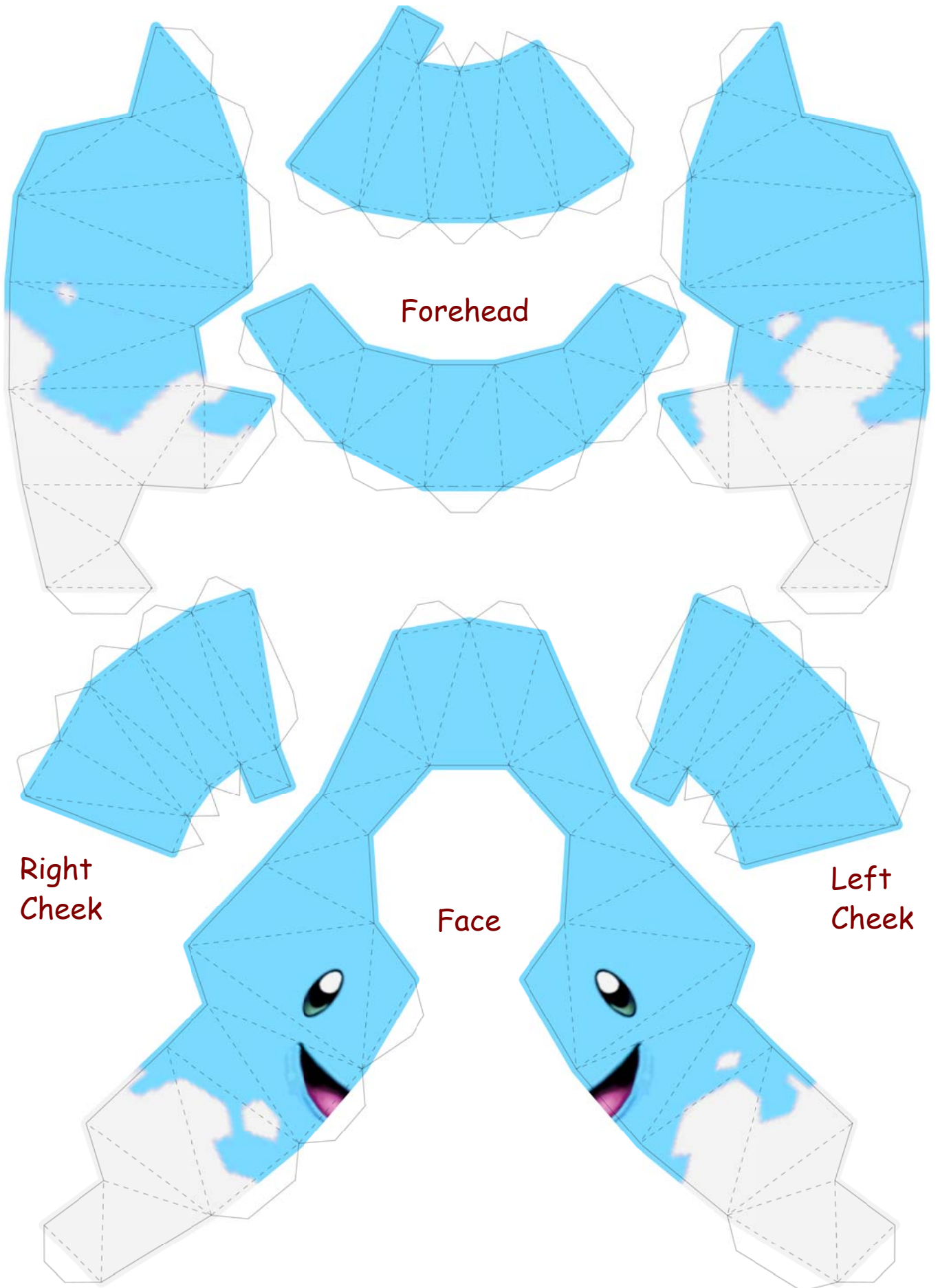
Back  
Leg

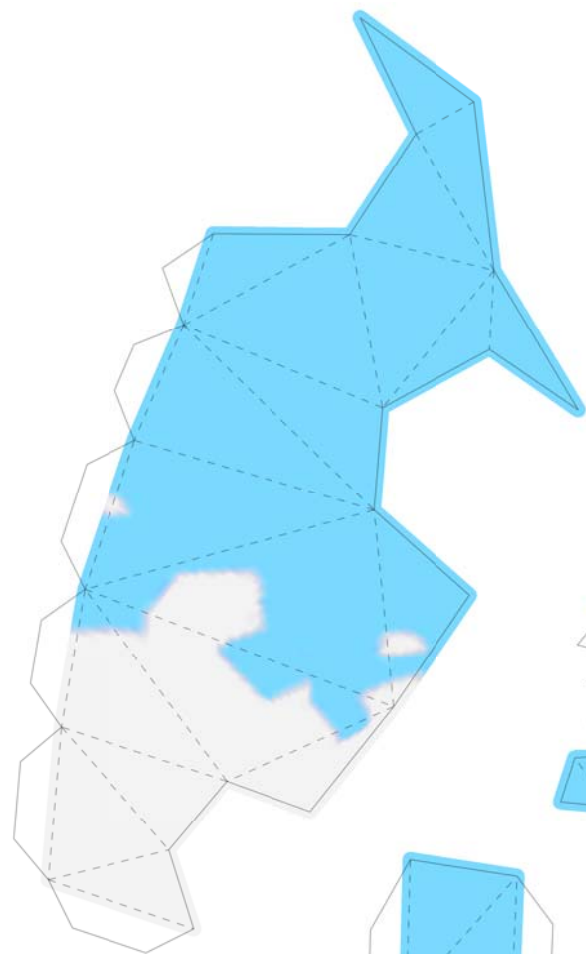


Right

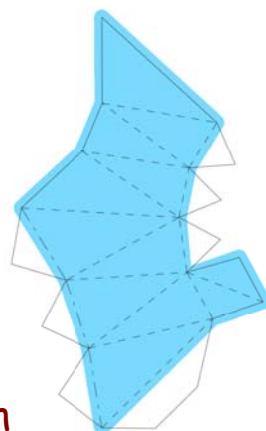
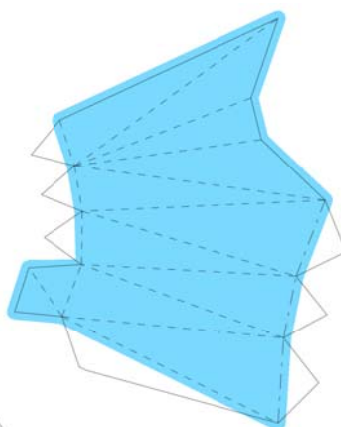
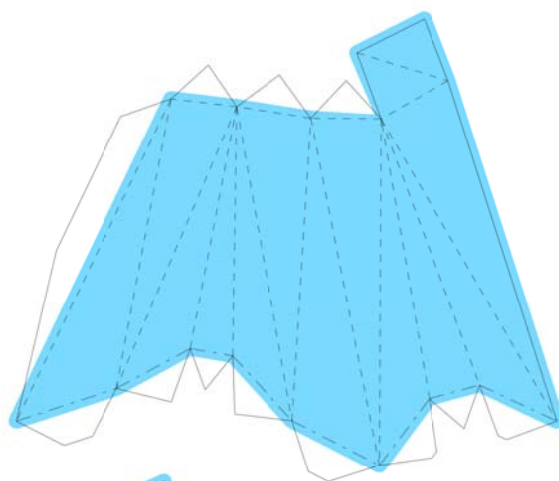
Front  
Leg



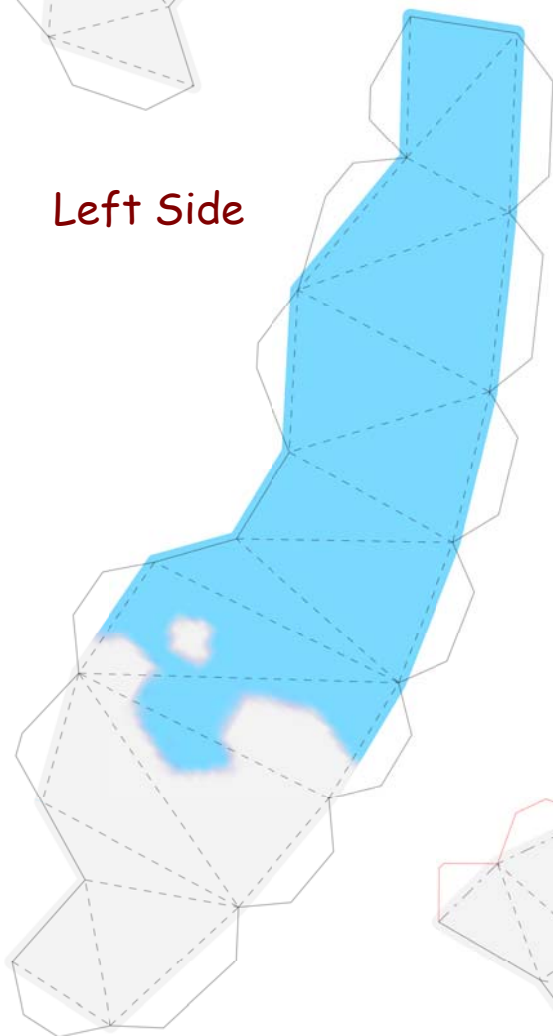
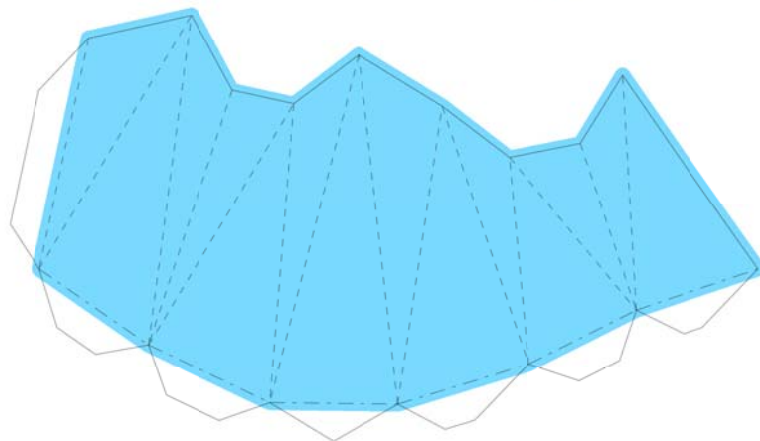




Left Side



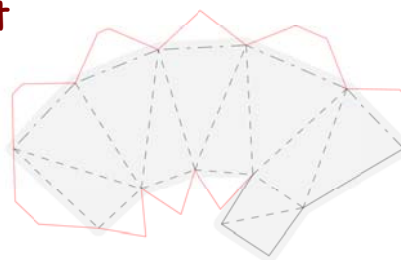
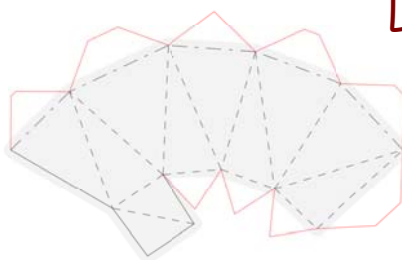
Left  
Front  
Branch



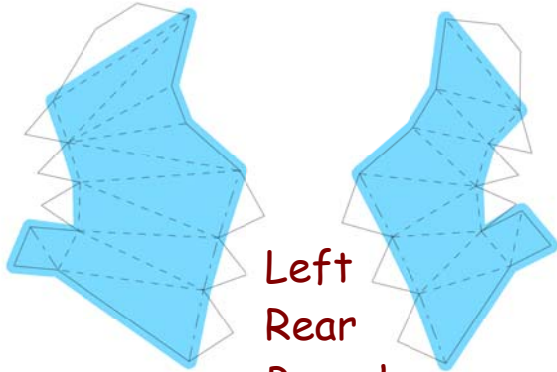
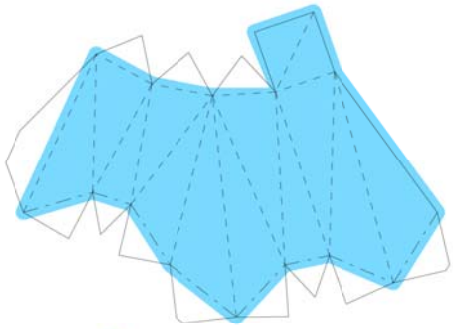
Front  
Leg

Back  
Leg

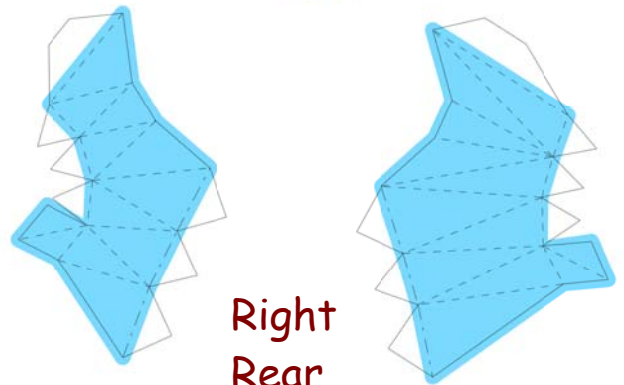
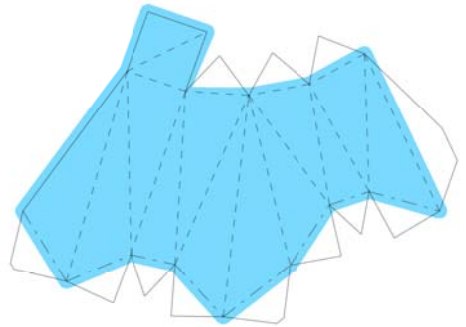
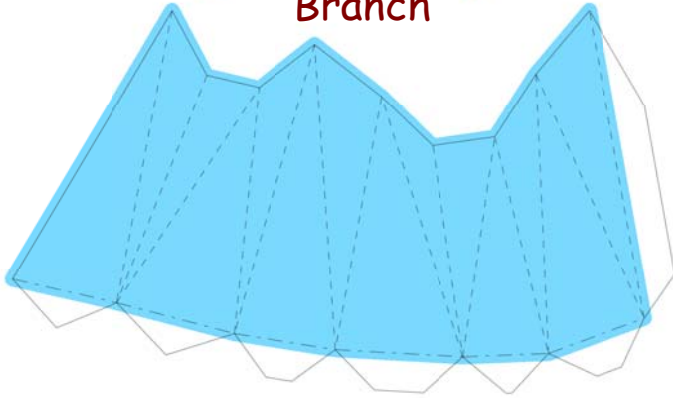
Left



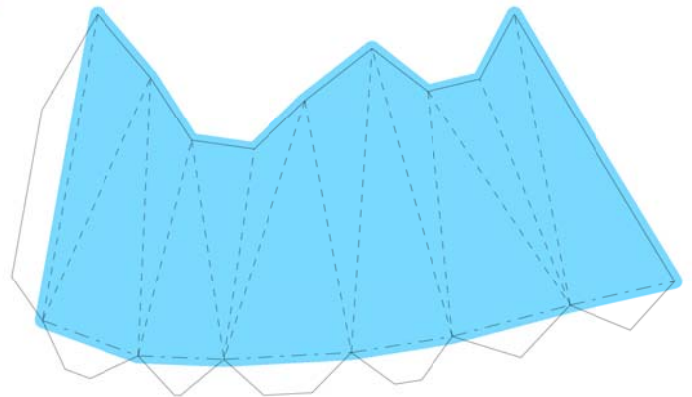




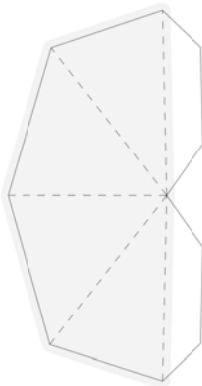
Left  
Rear  
Branch



Right  
Rear  
Branch



Join these two parts  
and attach this last.



Tummy

