

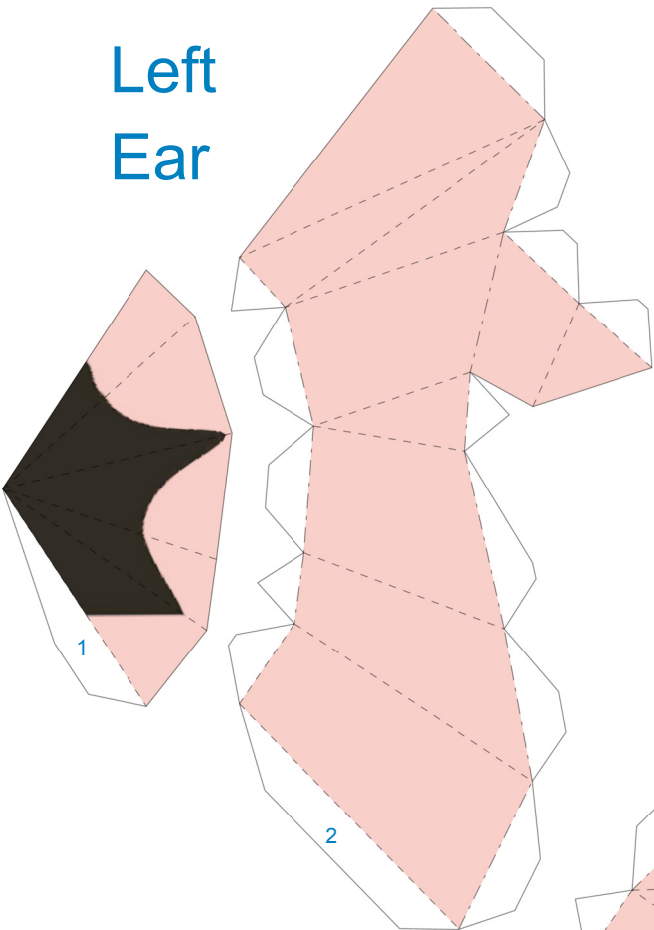
# Clefable

By PMF

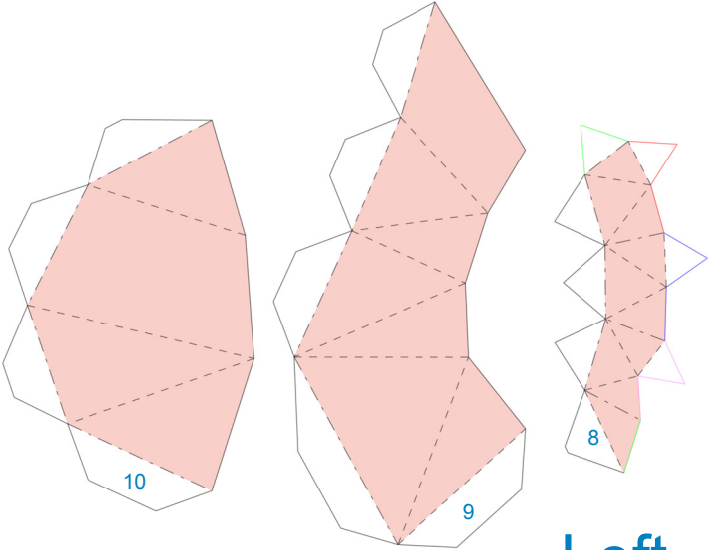


**PaperPokés**  
[www.pokemonpapercraft.com](http://www.pokemonpapercraft.com)

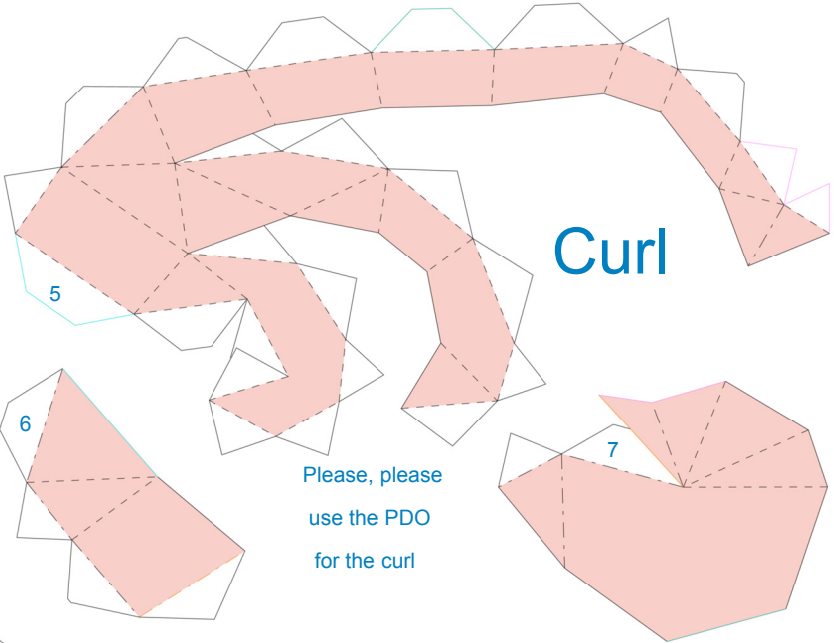
Left  
Ear



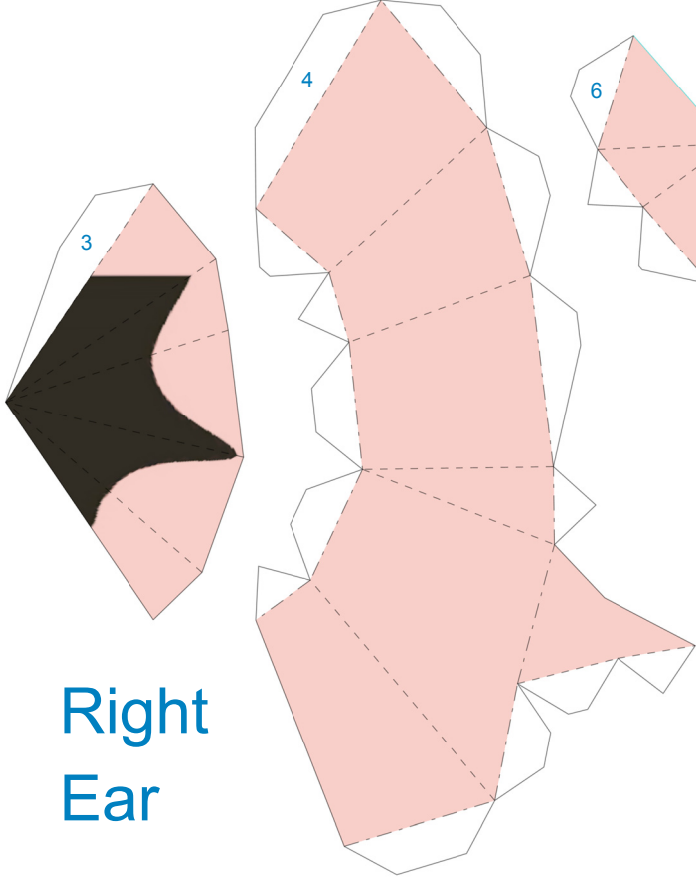
Left  
Arm



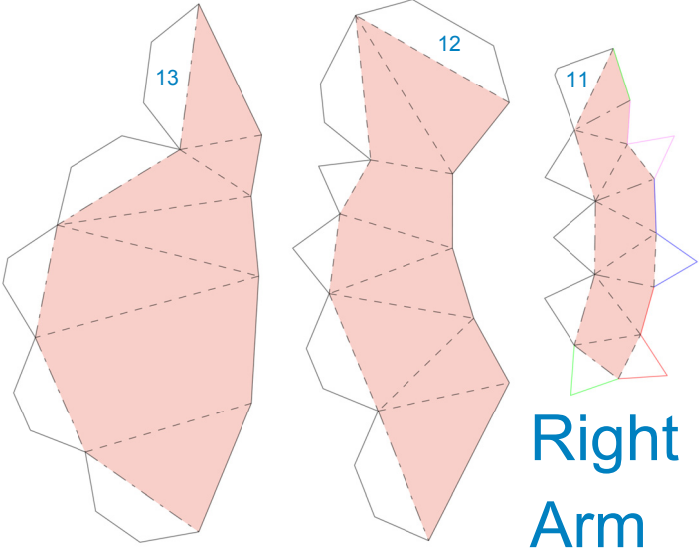
Curl

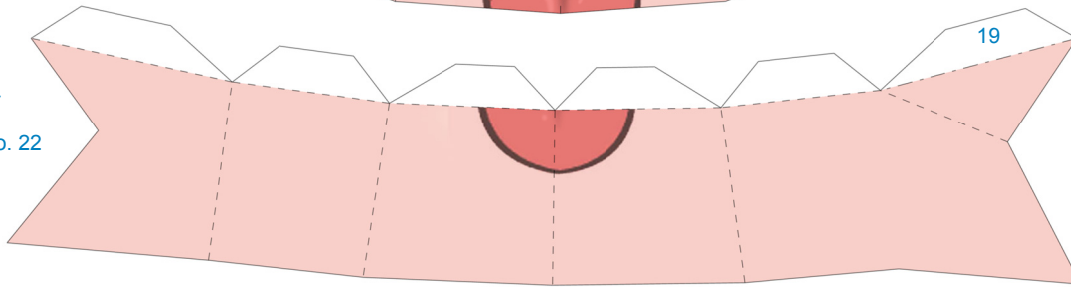
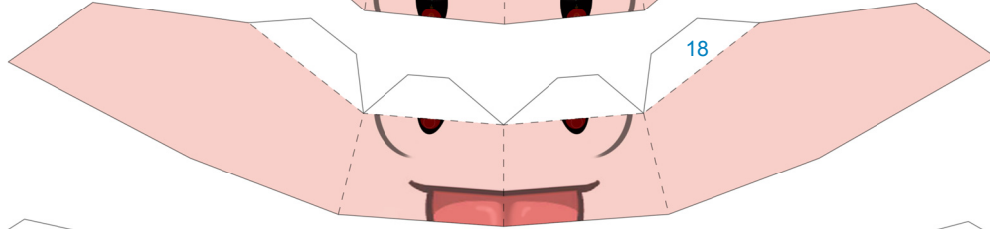
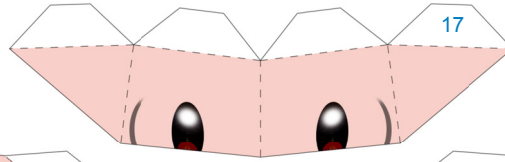
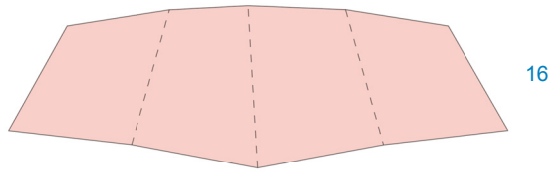


Right  
Ear



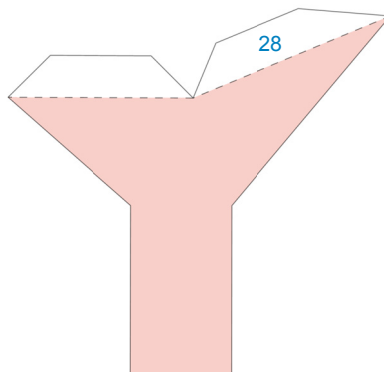
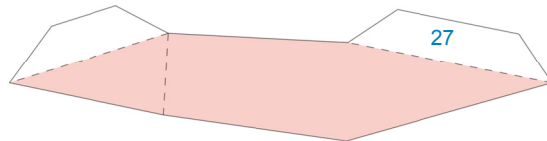
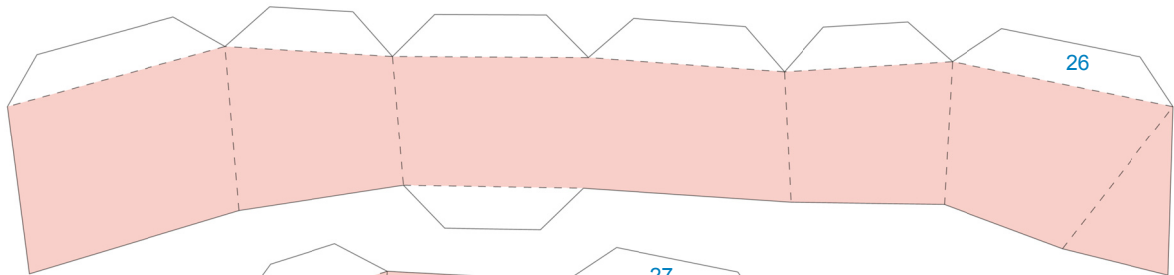
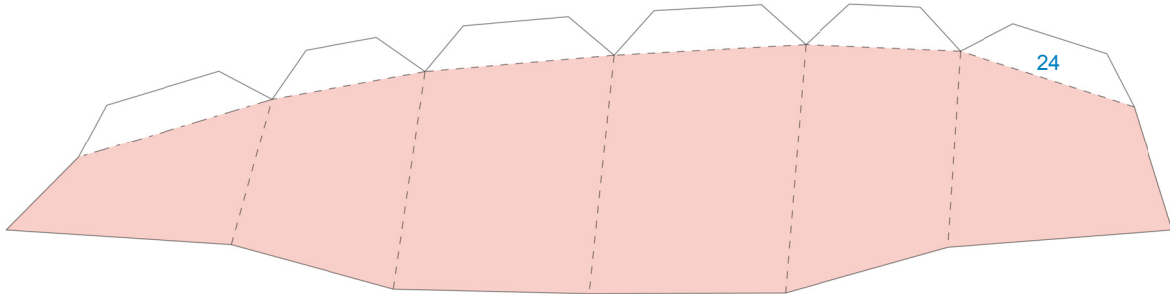
Right  
Arm

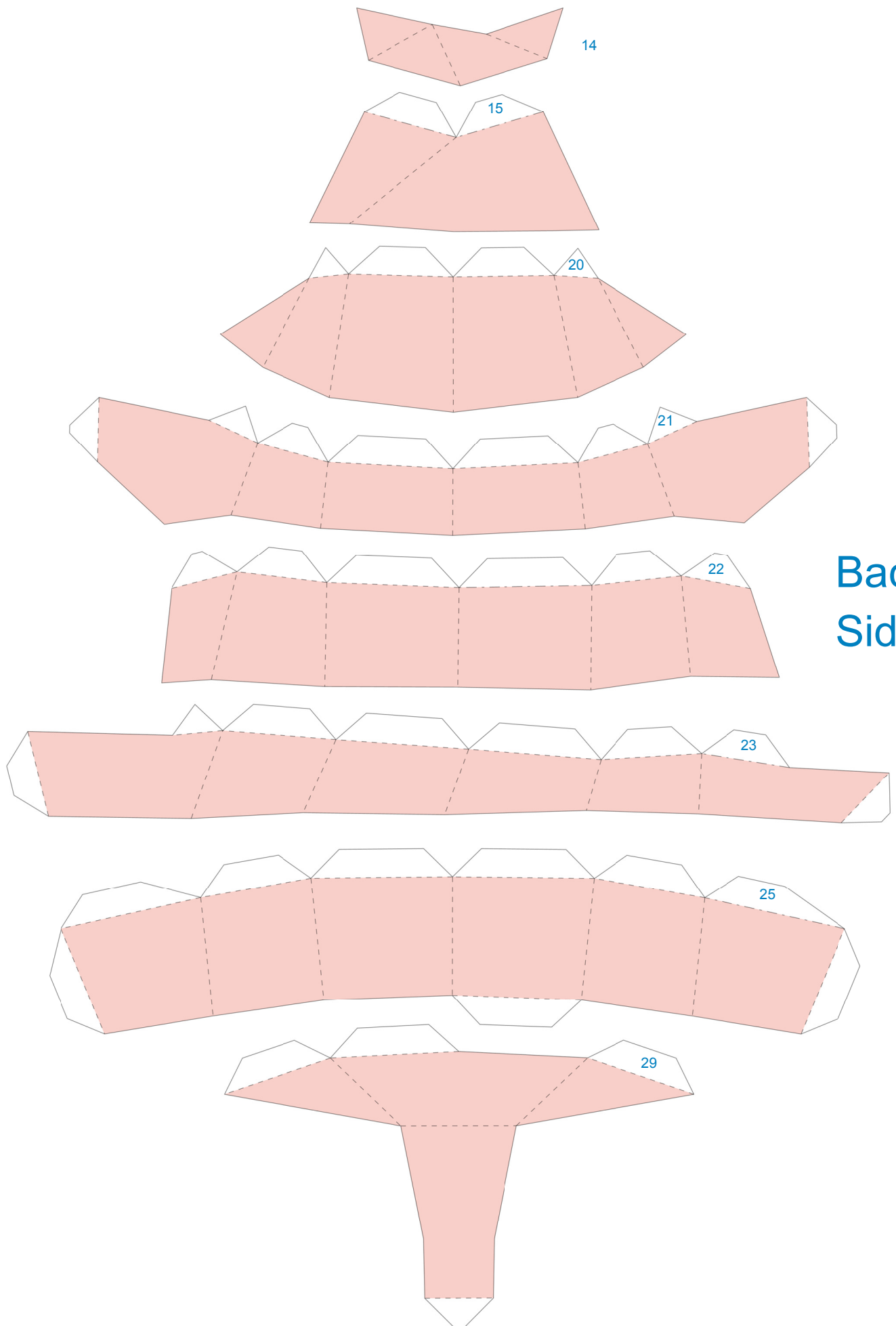


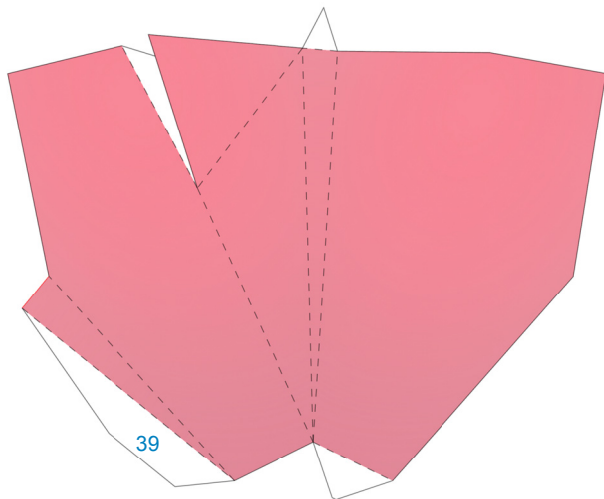


Insert arms after  
attaching piece no. 22

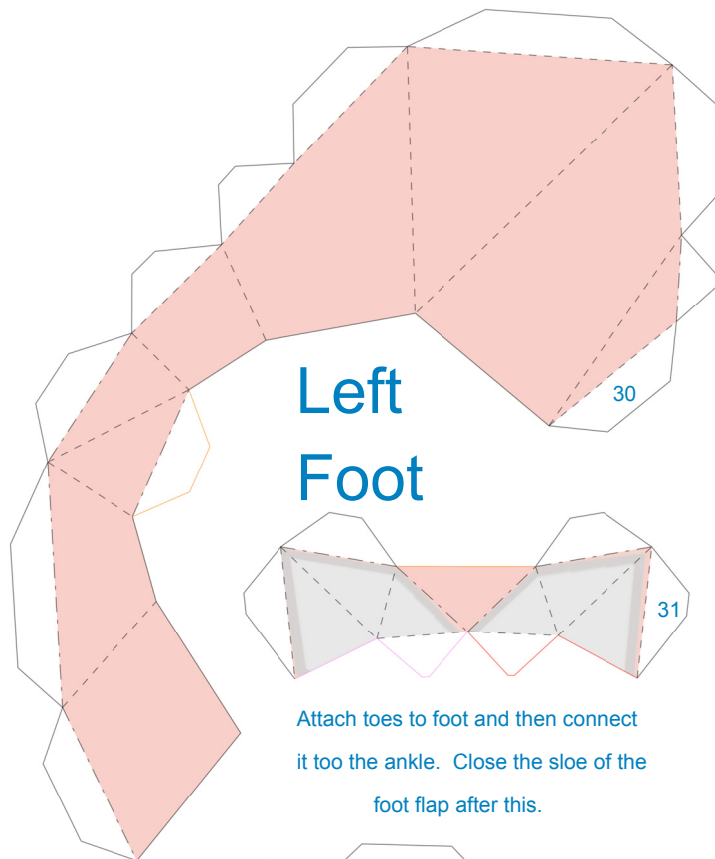
Front  
Side



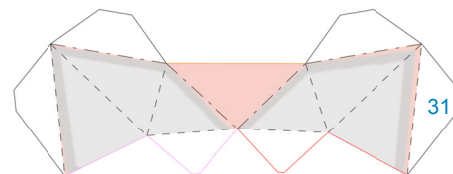




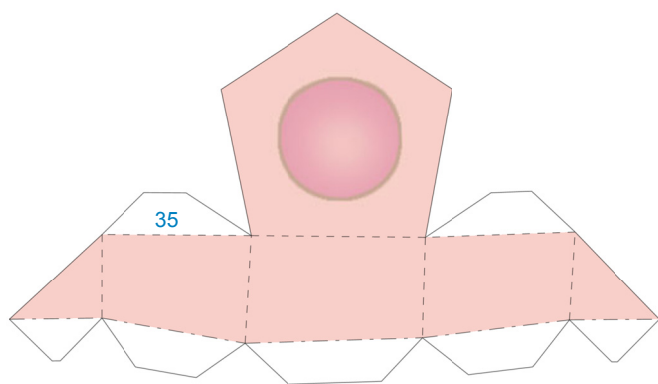
Left Wing



Left Foot

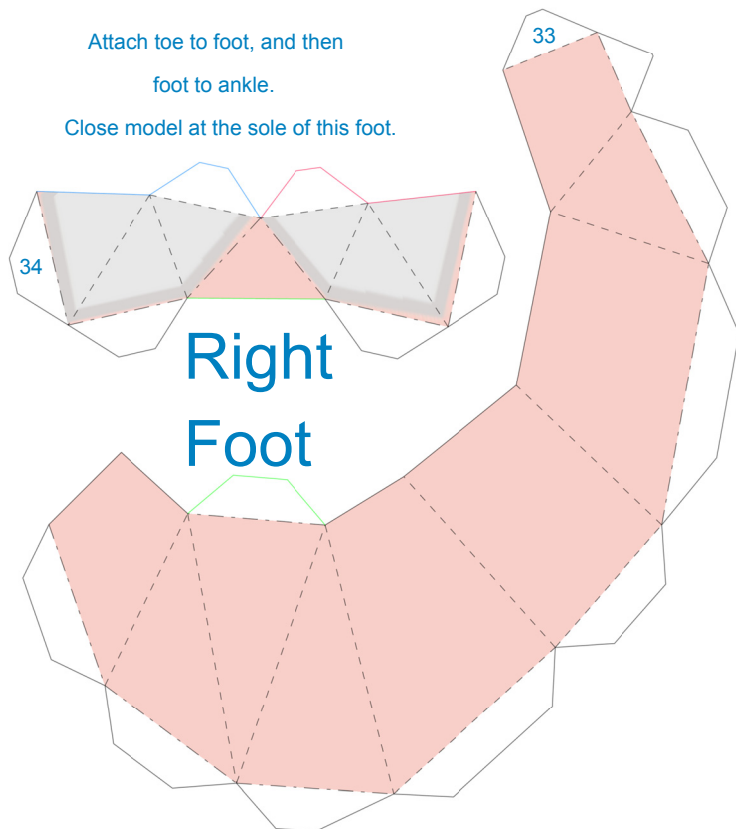


Attach toes to foot and then connect it too the ankle. Close the sloe of the foot flap after this.

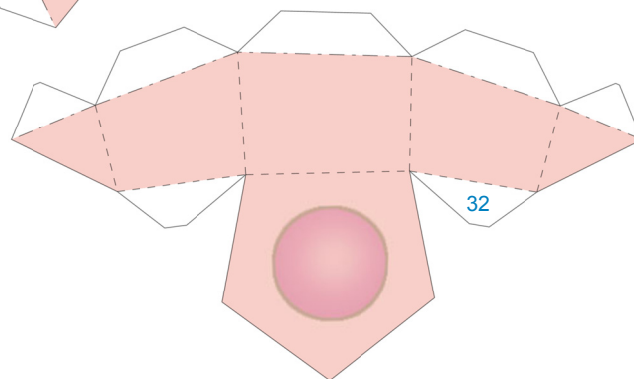


Attach toe to foot, and then foot to ankle.

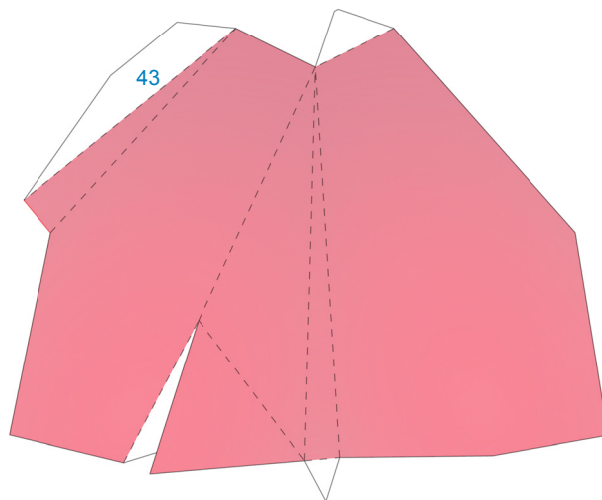
Close model at the sole of this foot.



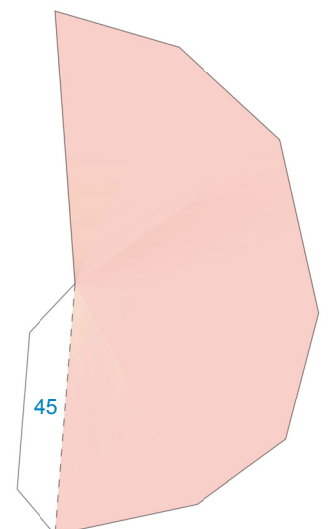
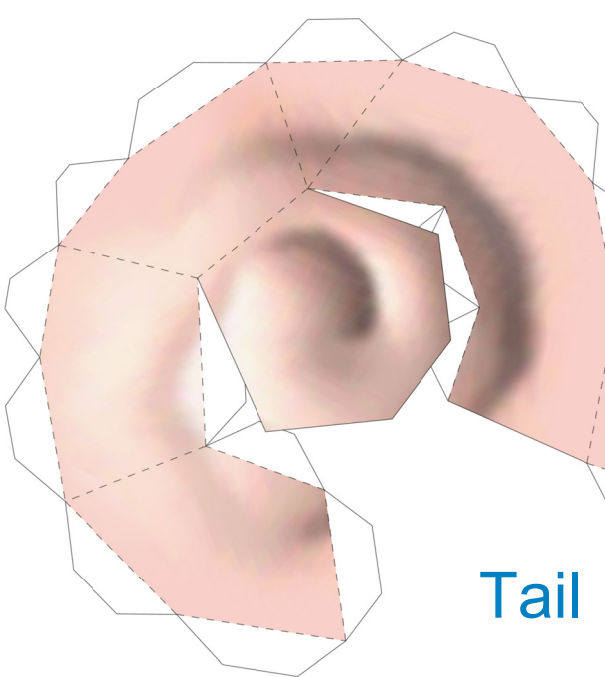
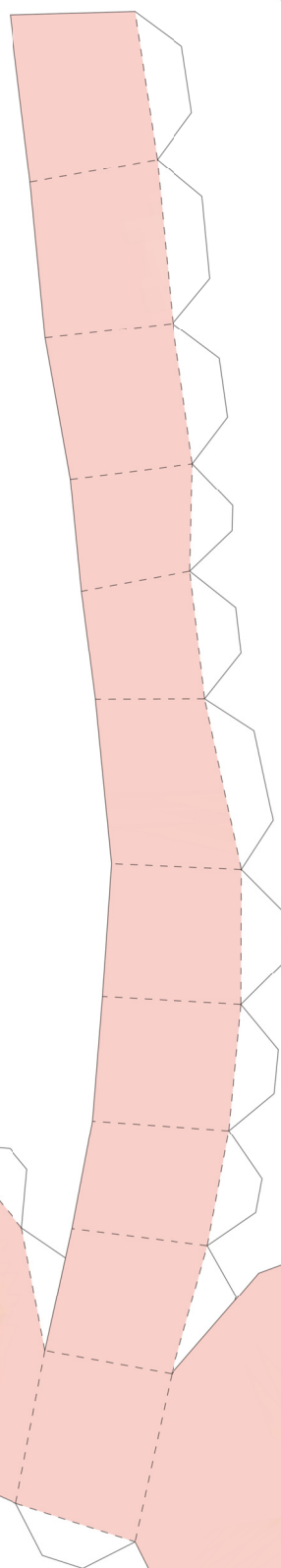
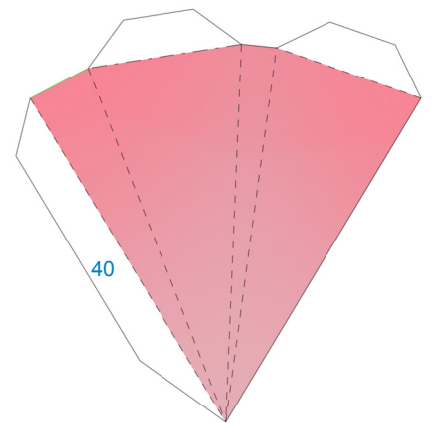
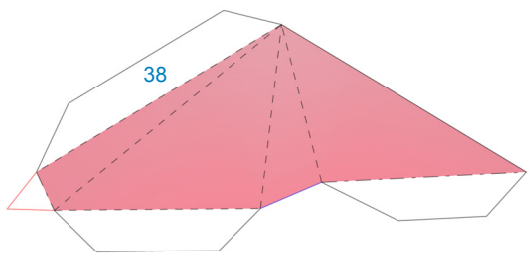
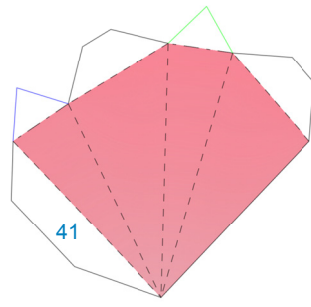
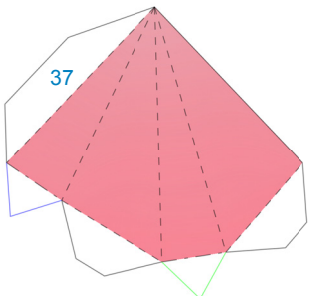
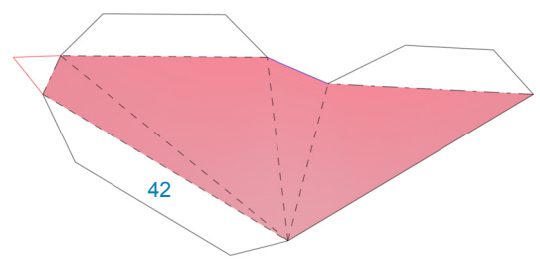
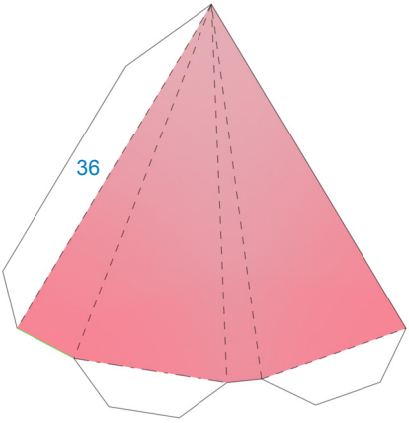
Right Foot



Right Wing







Tail