

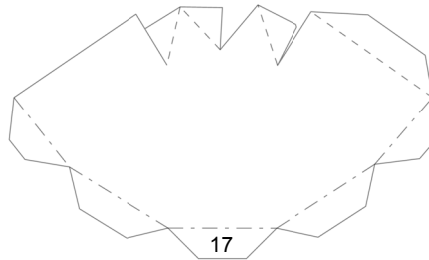
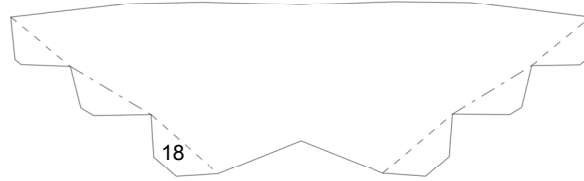
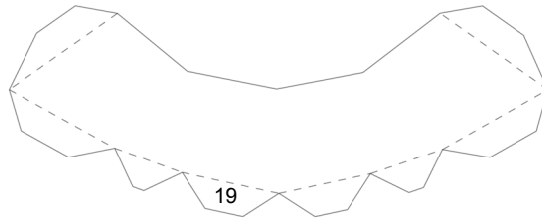
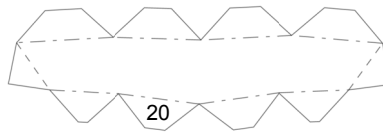
CHARMELEON

by POdragon

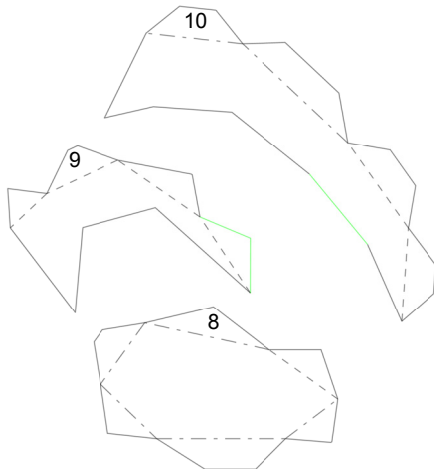


Paper Pokés
www.pokemonpapercraft.com

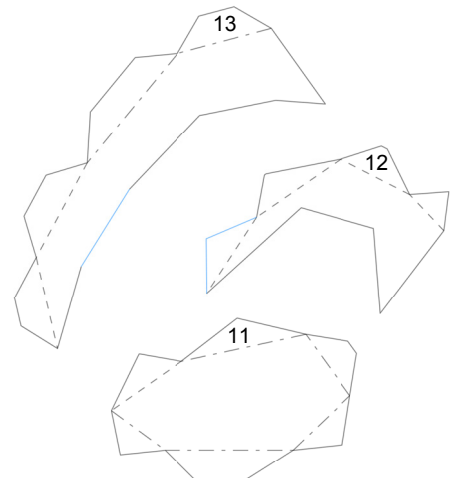
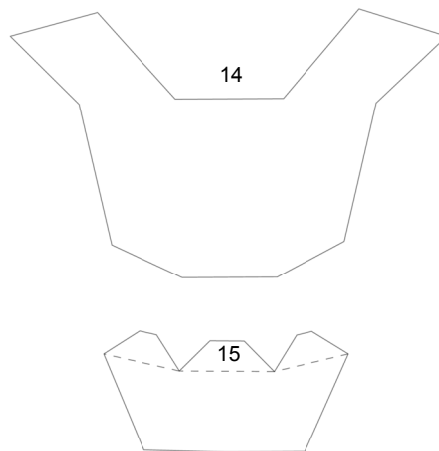
Back
of
Head



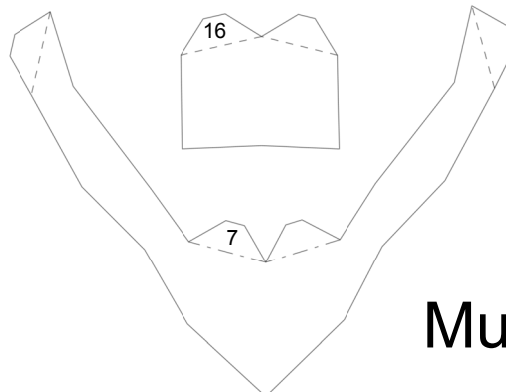
Horn



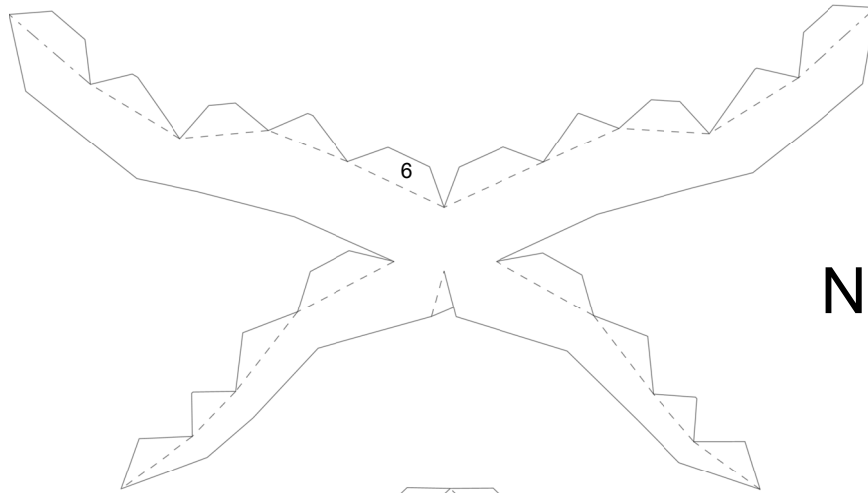
Glue 8, 9 & 10
together before
attaching to muzzle



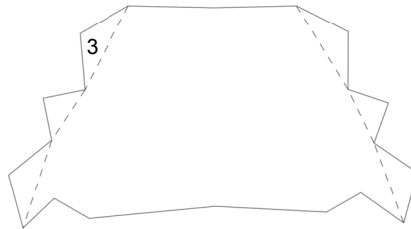
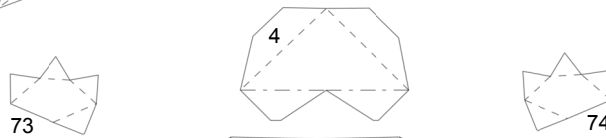
Glue 11, 12 & 13
together before
attaching to muzzle



Muzzle



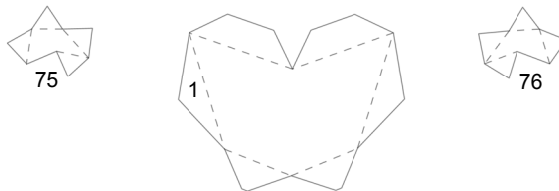
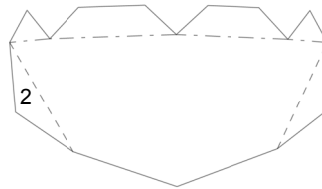
Nose



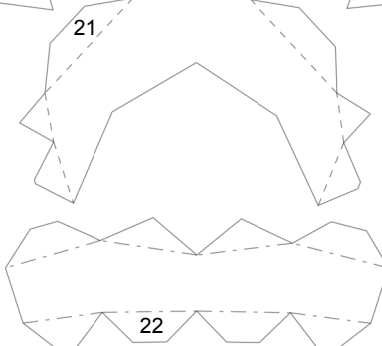
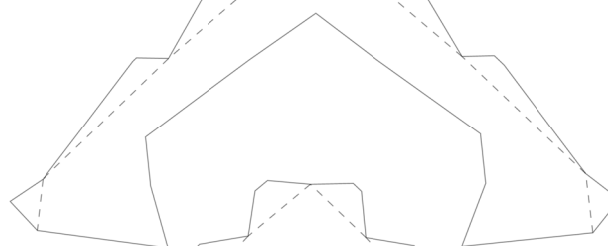
DO NOT LOOSE THE TEETH!

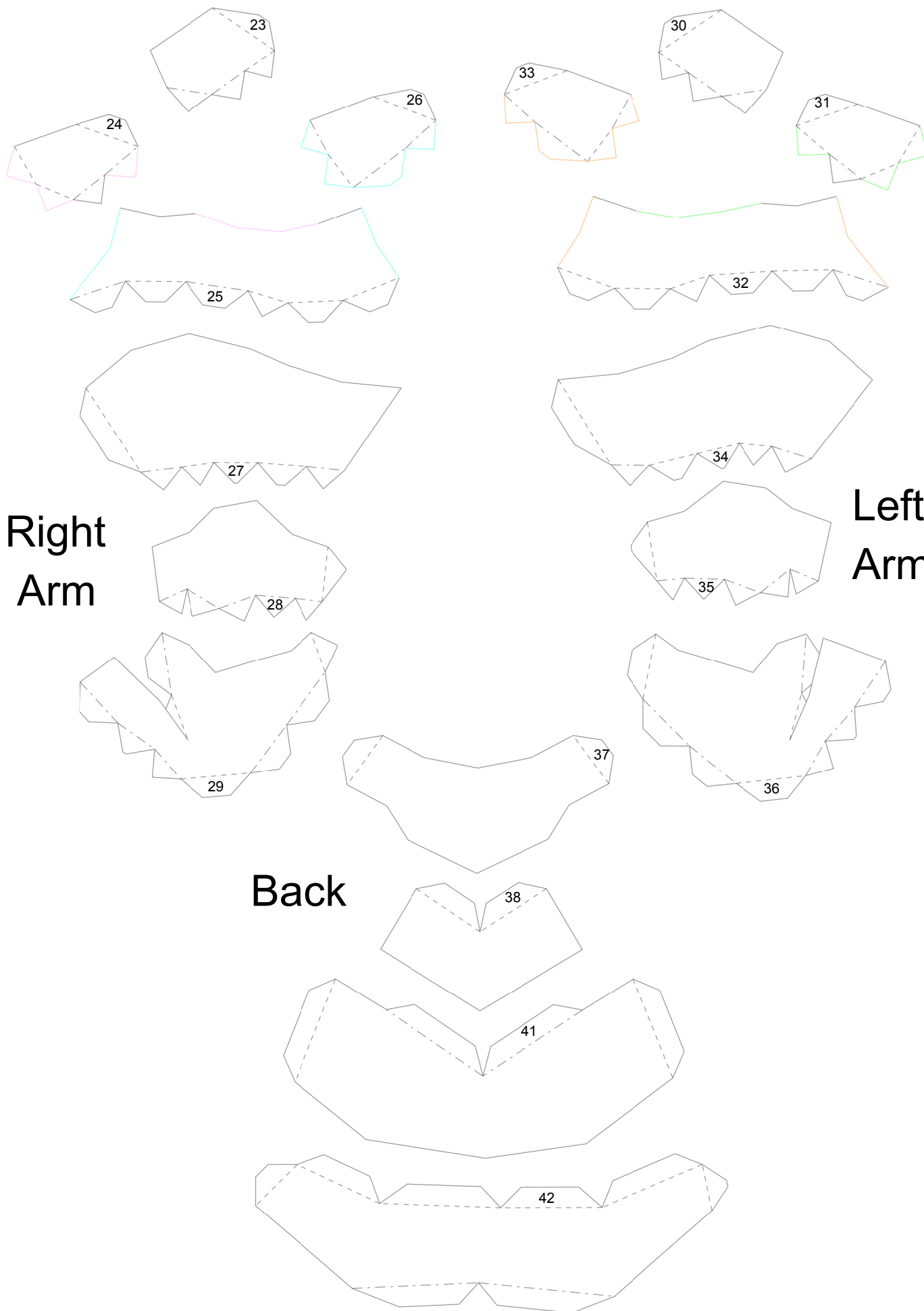
You can attach them
once you have
completed the mouth

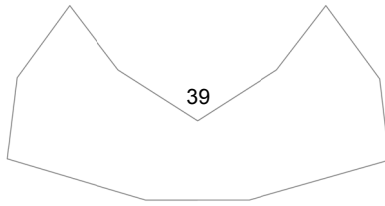
Mouth



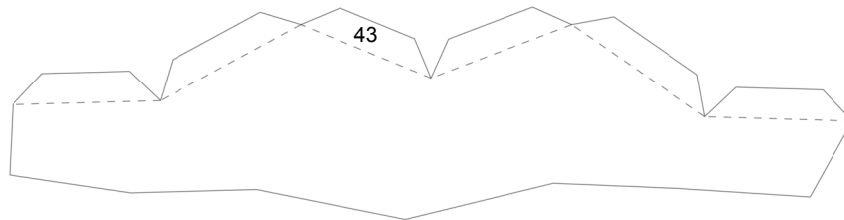
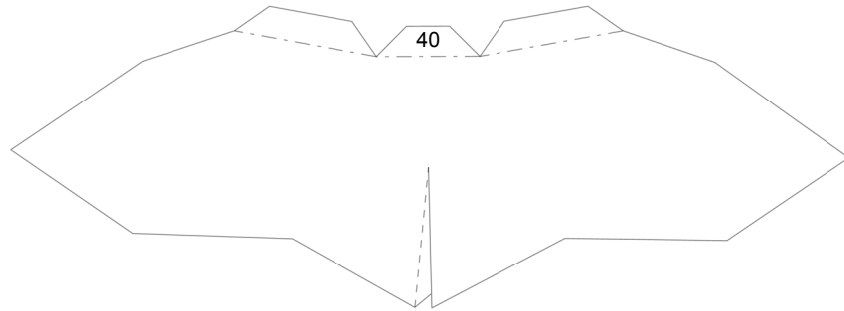
Chin



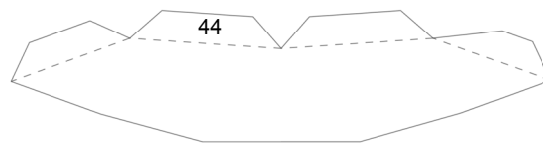




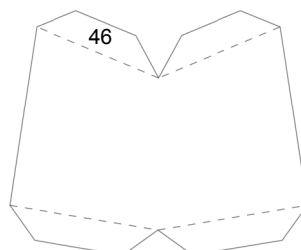
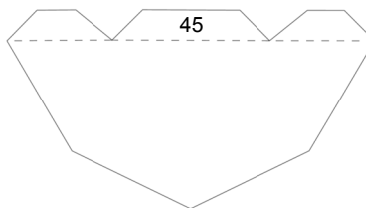
Attach arms after
gluing piece 40

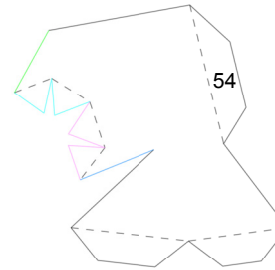
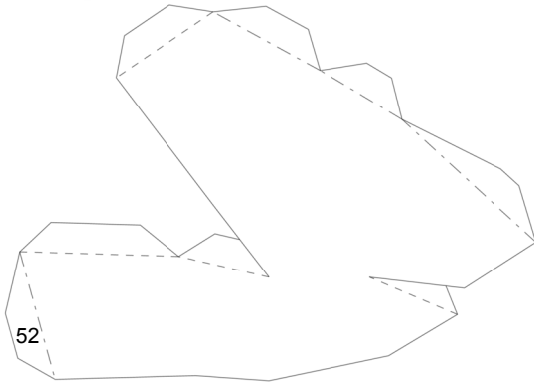
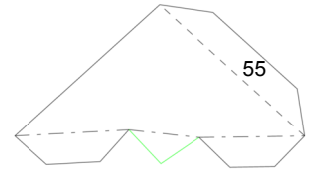
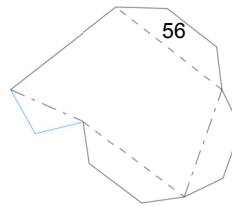
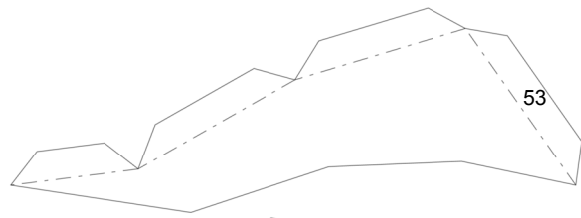


Tummy

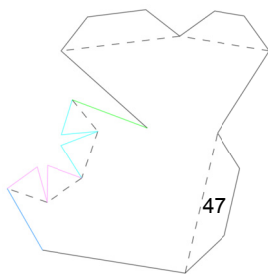
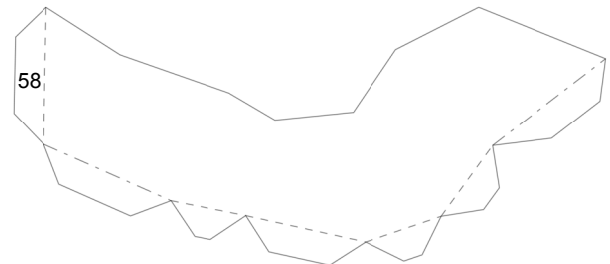
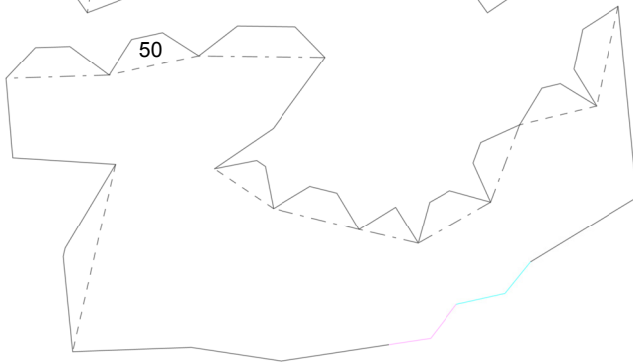
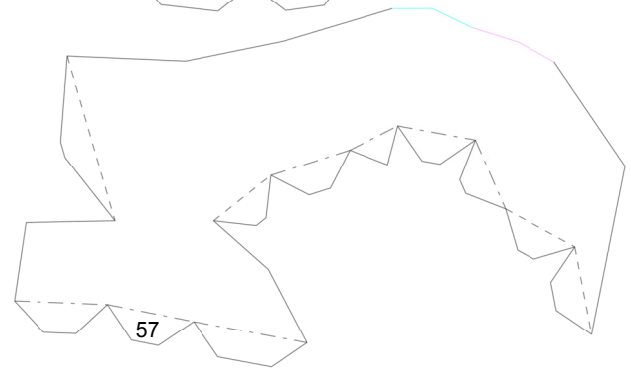
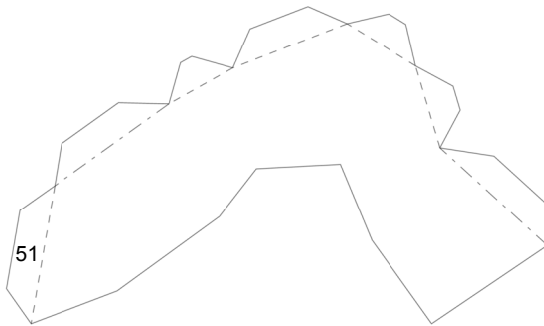


Glue
counterweight -->
here

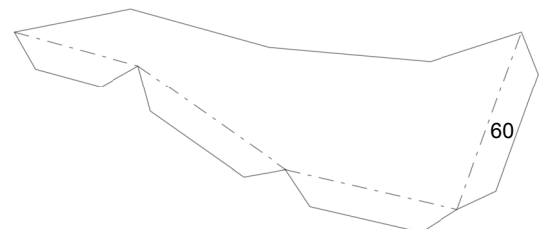
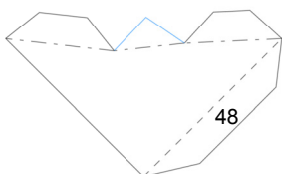
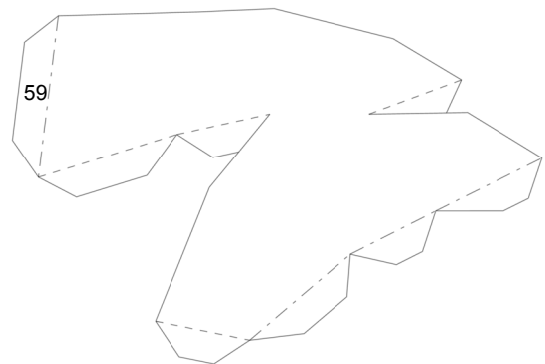
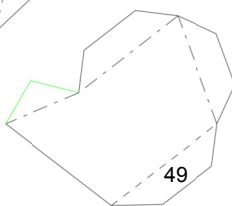




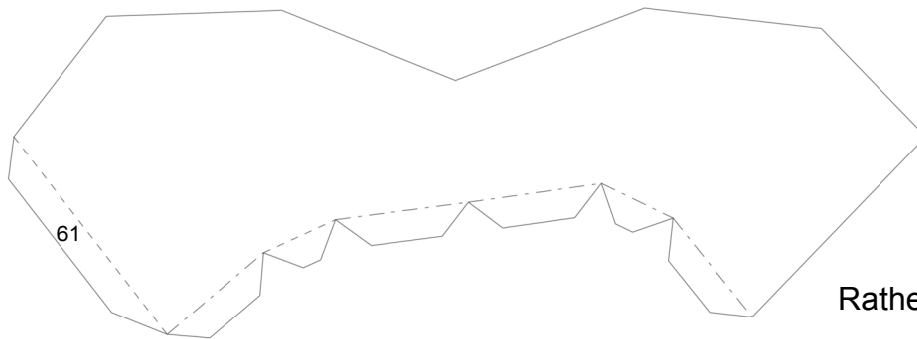
Left
Leg



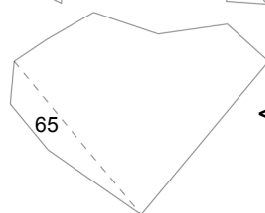
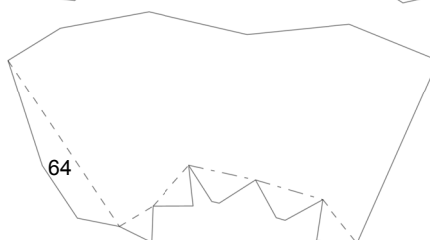
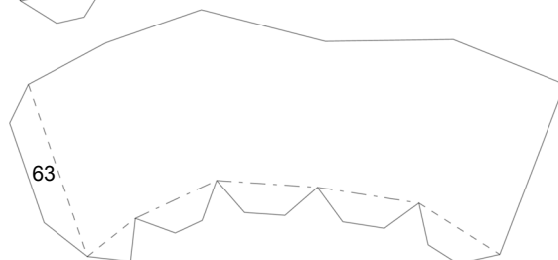
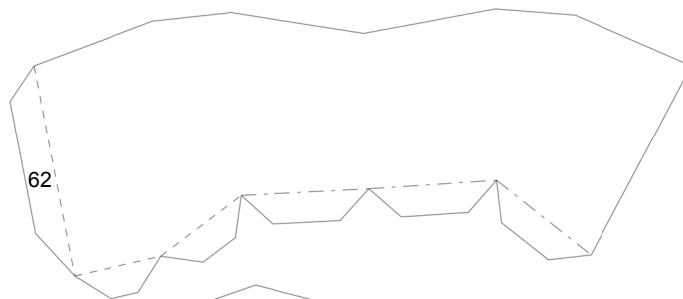
Right
Leg



Tail



Rather than attaching
complete rings
attach tab-by-tab in
a wrapping motion



<-- Close model here

Flame is tricky
It is best
constructed in
front of the PDO

Flame

