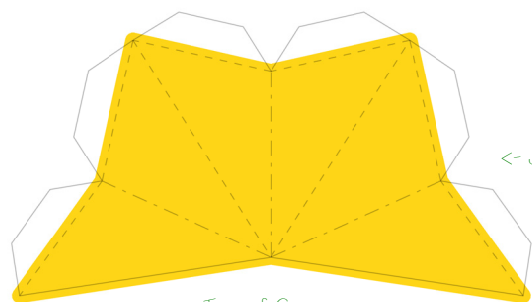


Cacnea

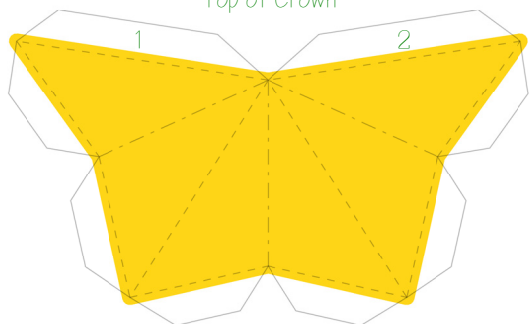
By PMF



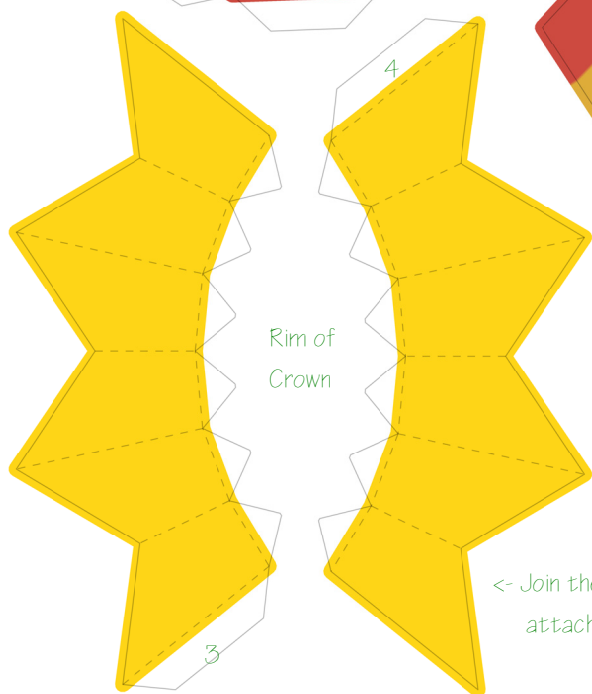
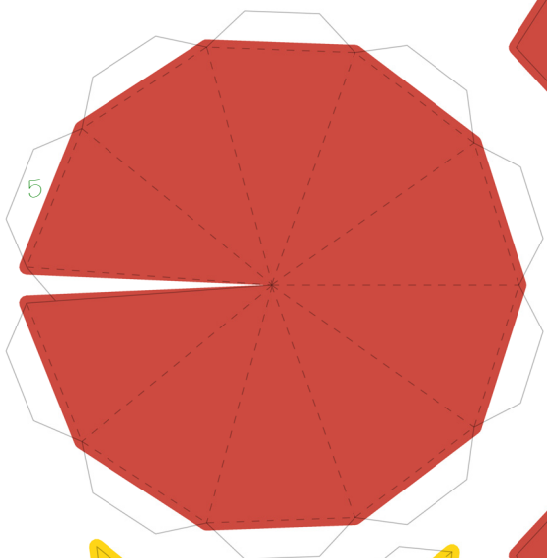
Paper Pokés
www.pokemonpapercraft.com



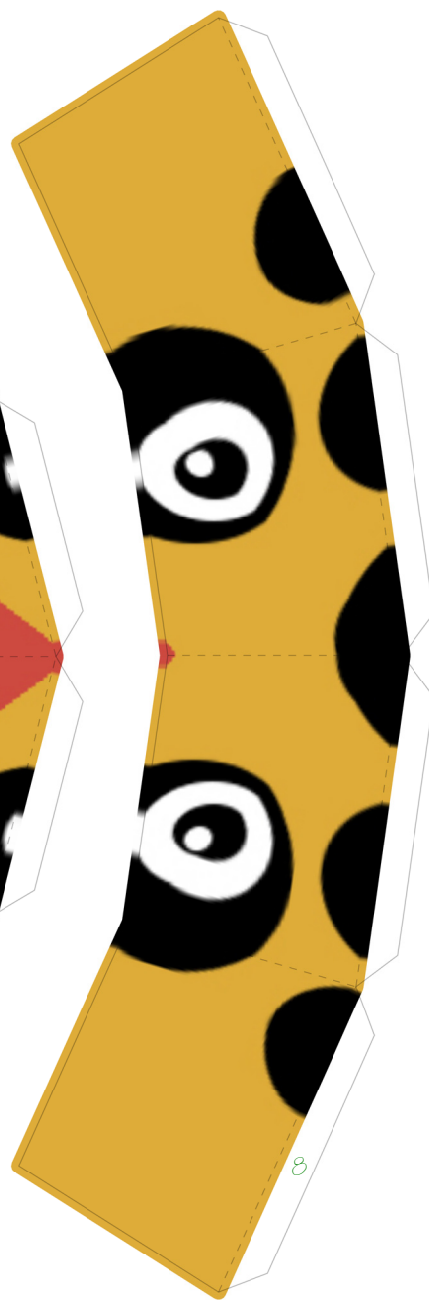
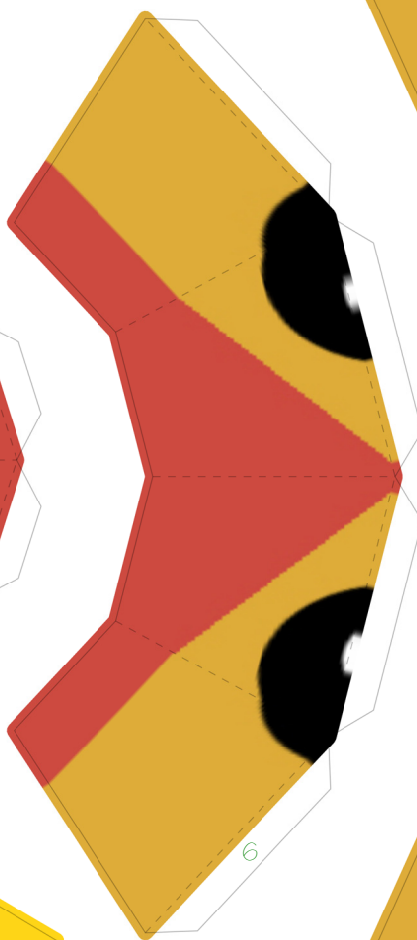
<- Join these 2 parts together first



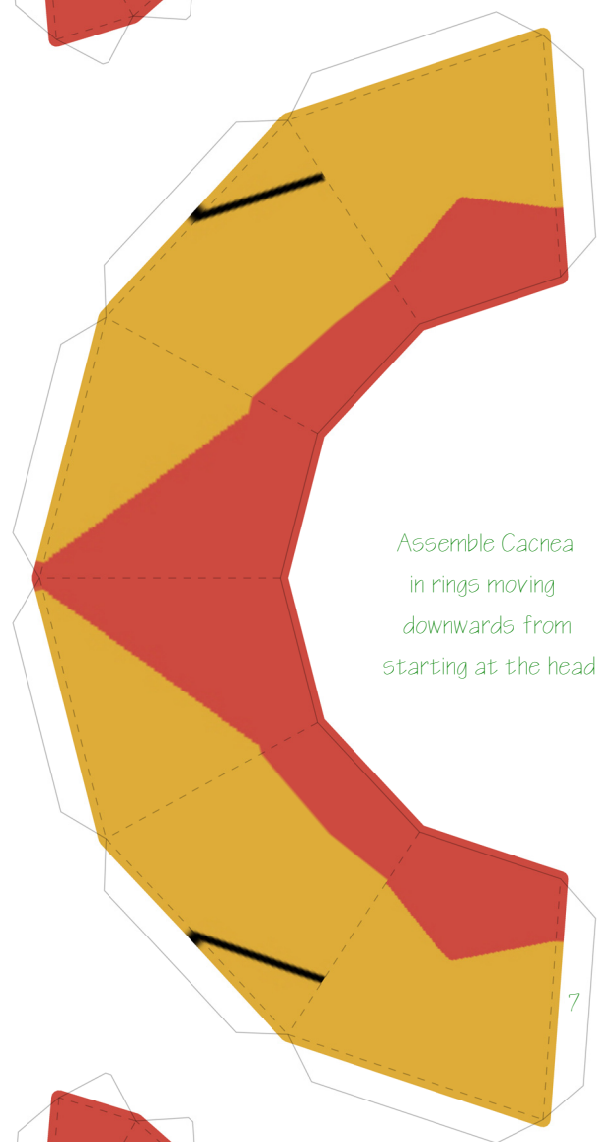
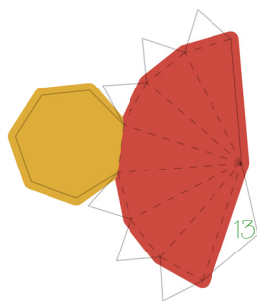
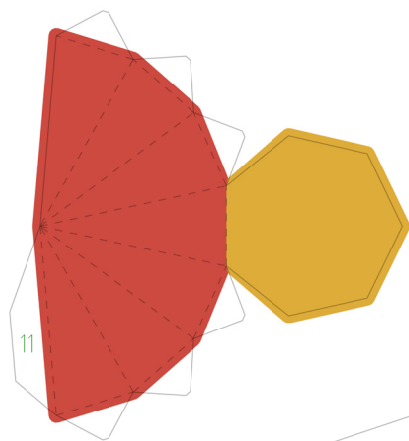
Top of Crown



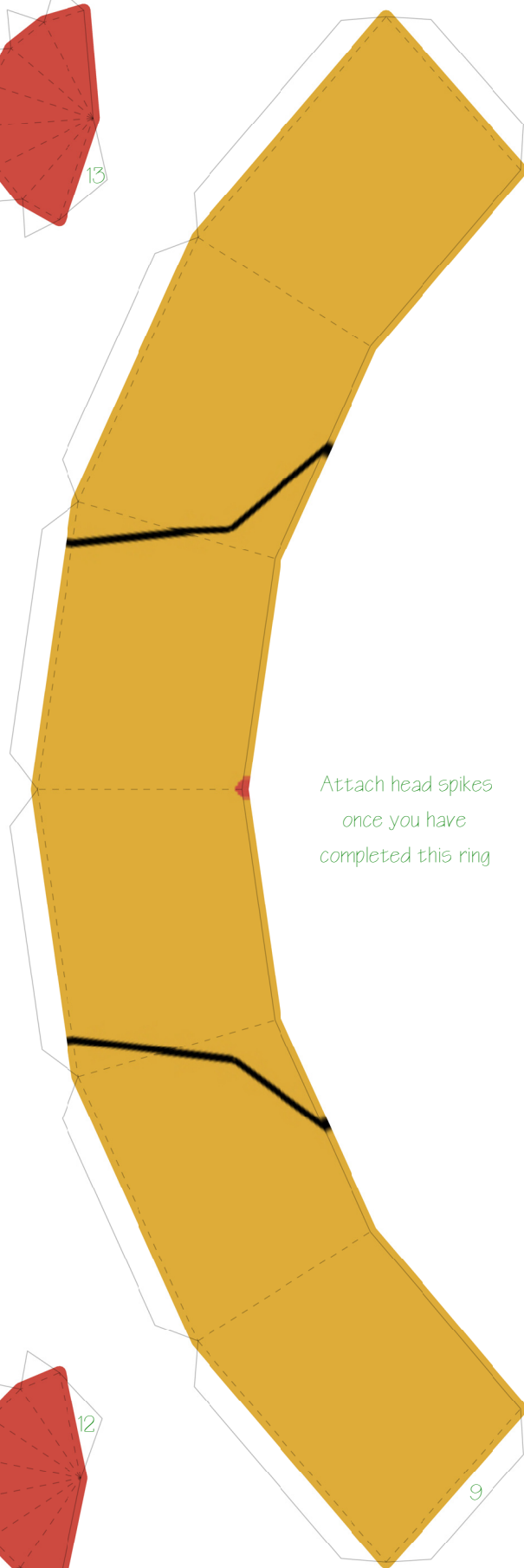
Rim of Crown



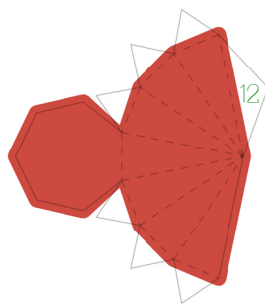
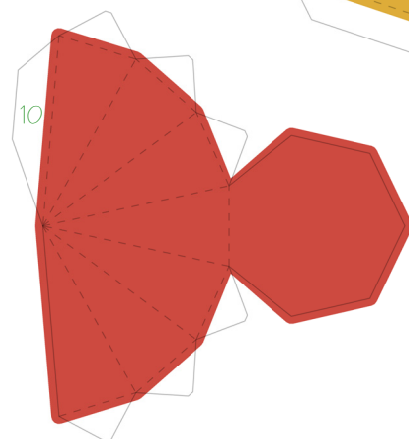
<- Join these two parts together, and then
attach to the top of the crown tab by tab

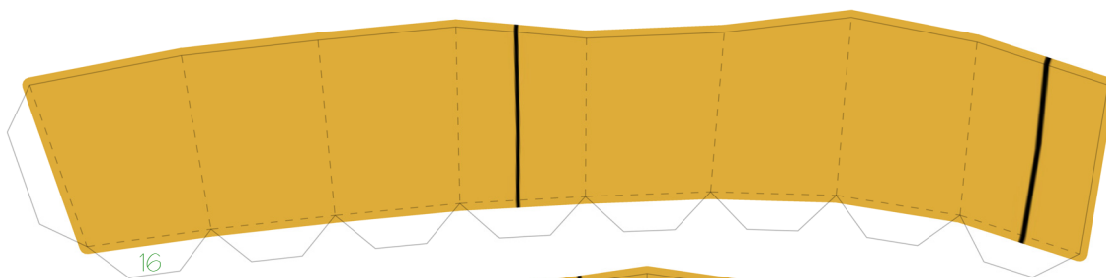
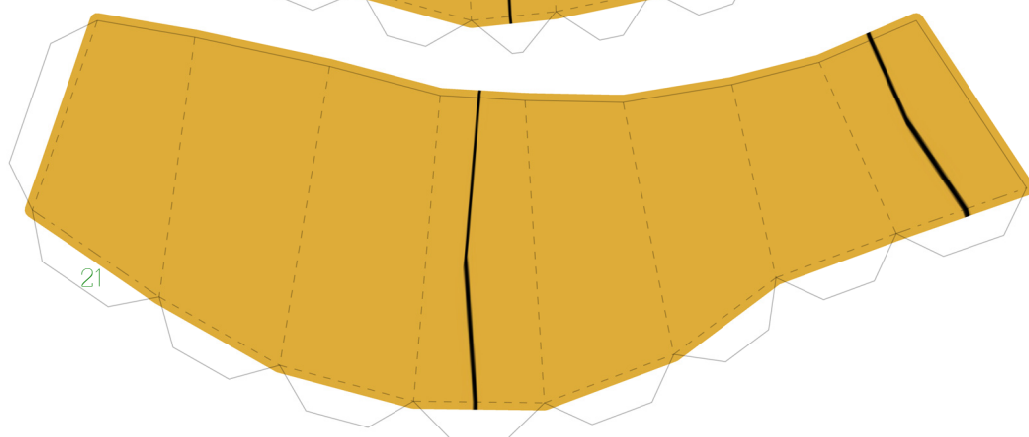
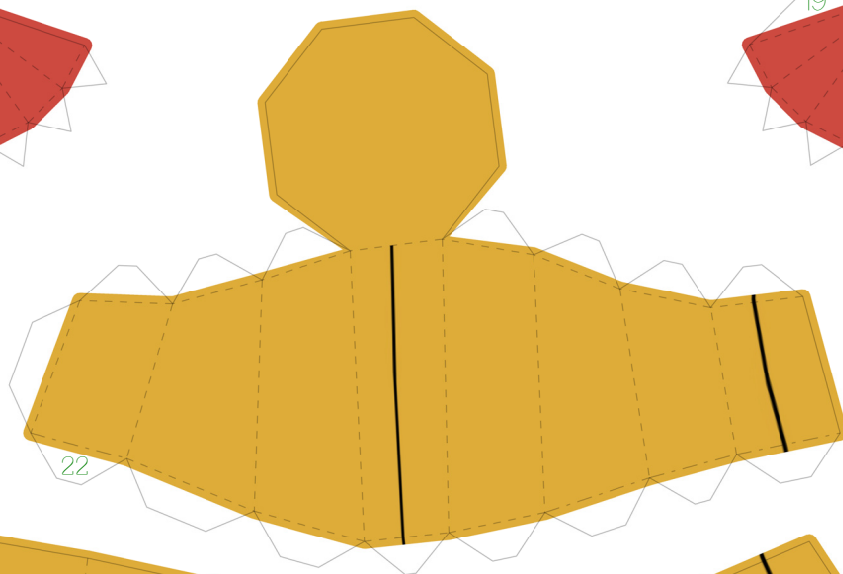
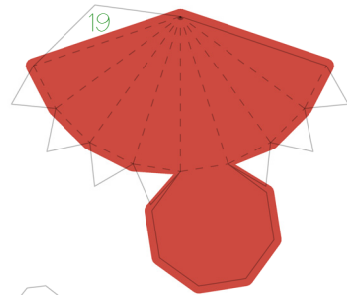
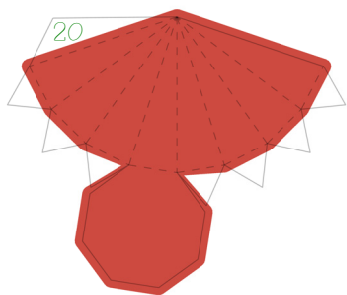


Assemble Cacnea
in rings moving
downwards from
starting at the head

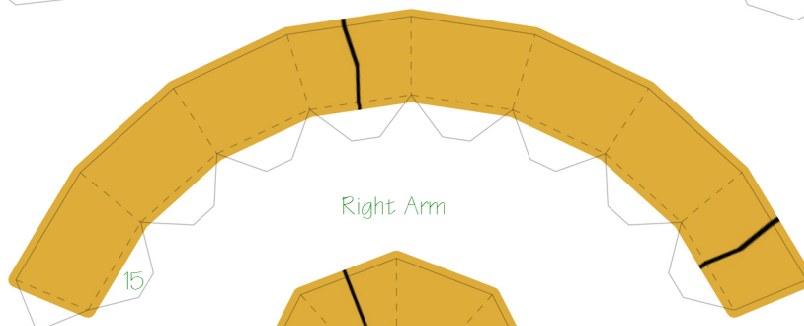


Attach head spikes
once you have
completed this ring

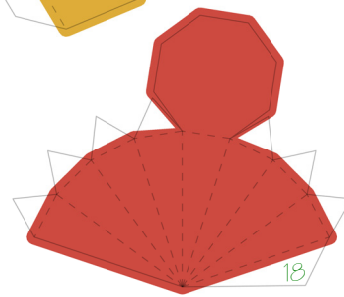
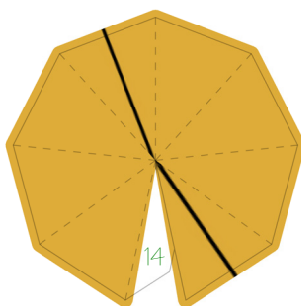
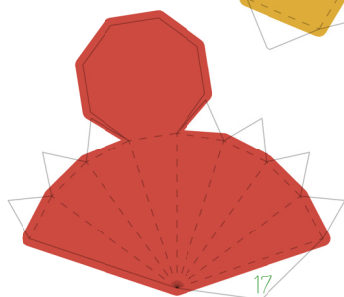


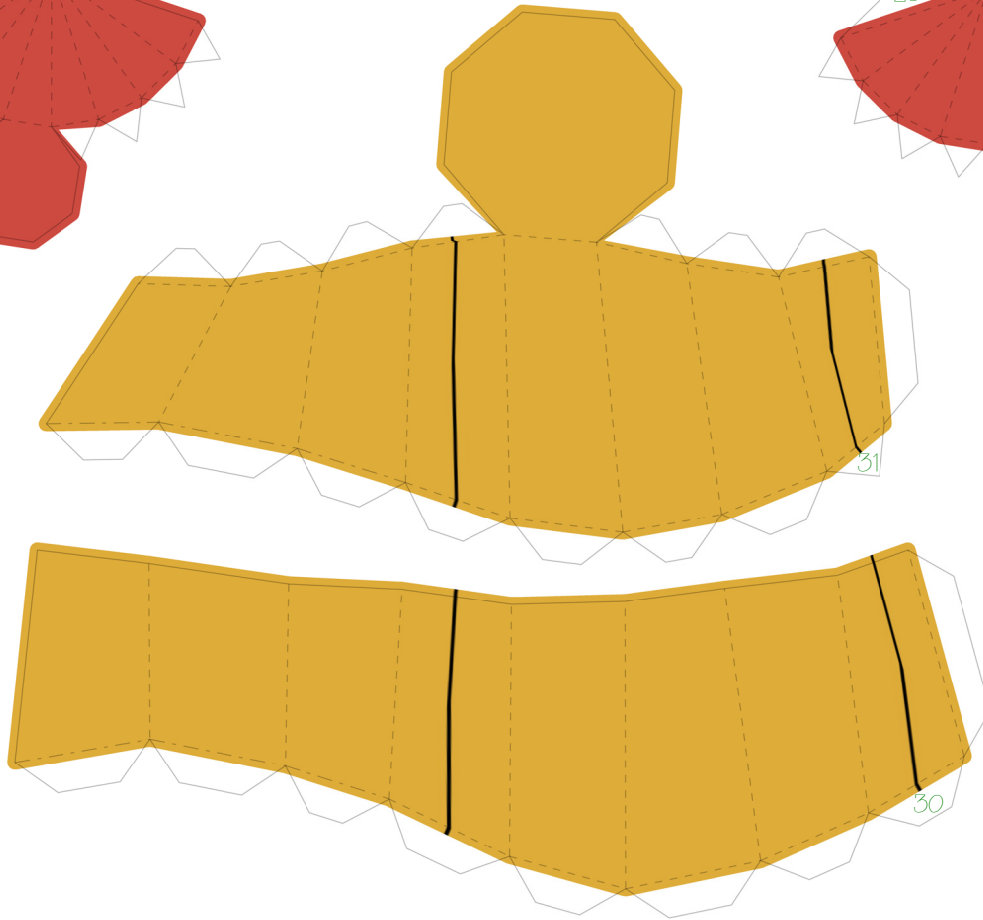
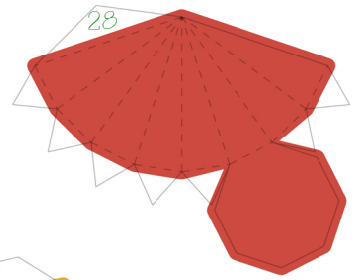
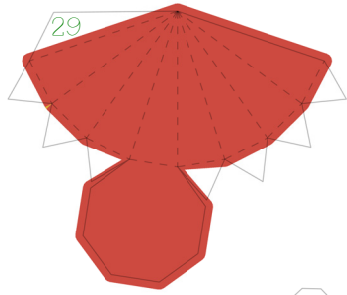


Attach spikes once
you have
connected this ring



Right Arm





Attach spike once
you have
connected this ring

