

# Cacnea

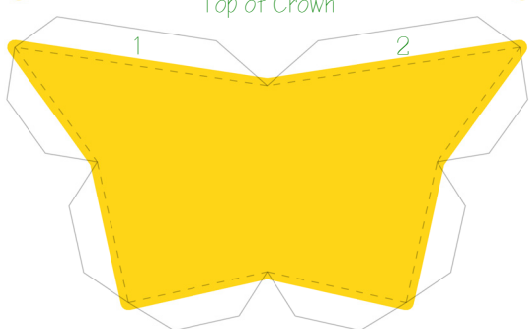
By PMF



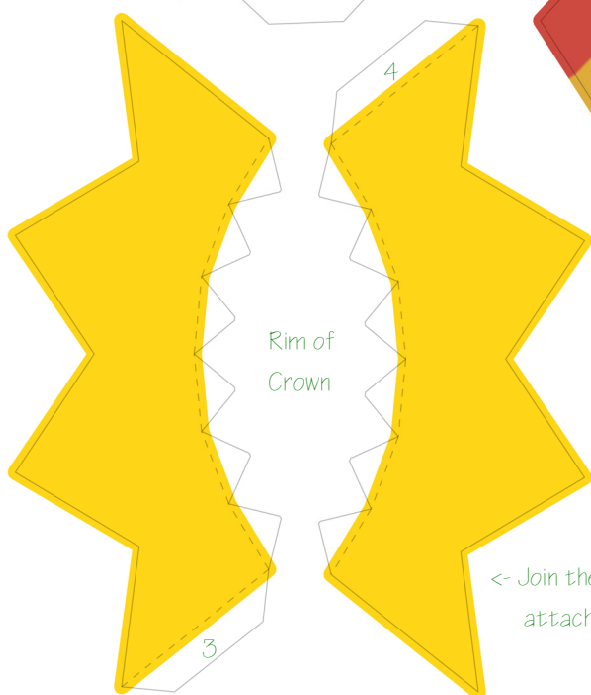
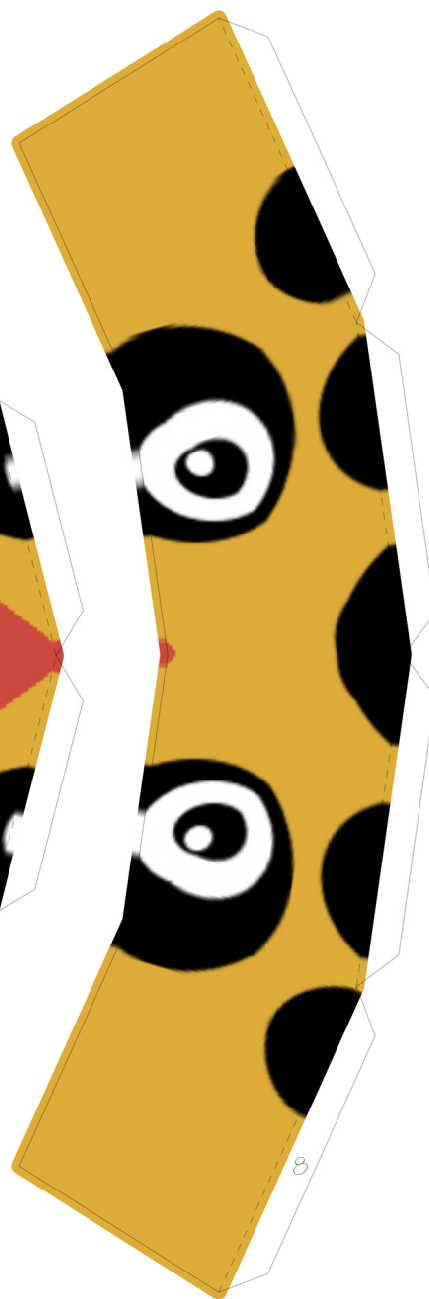
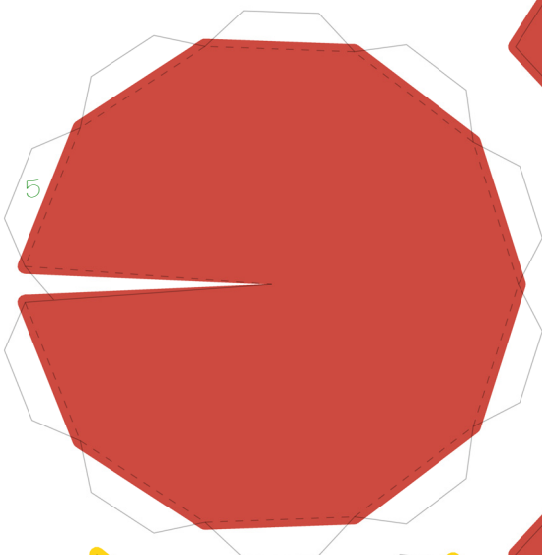
**PaperPokés**  
[www.pokemonpapercraft.com](http://www.pokemonpapercraft.com)



<- Join these 2 parts together first

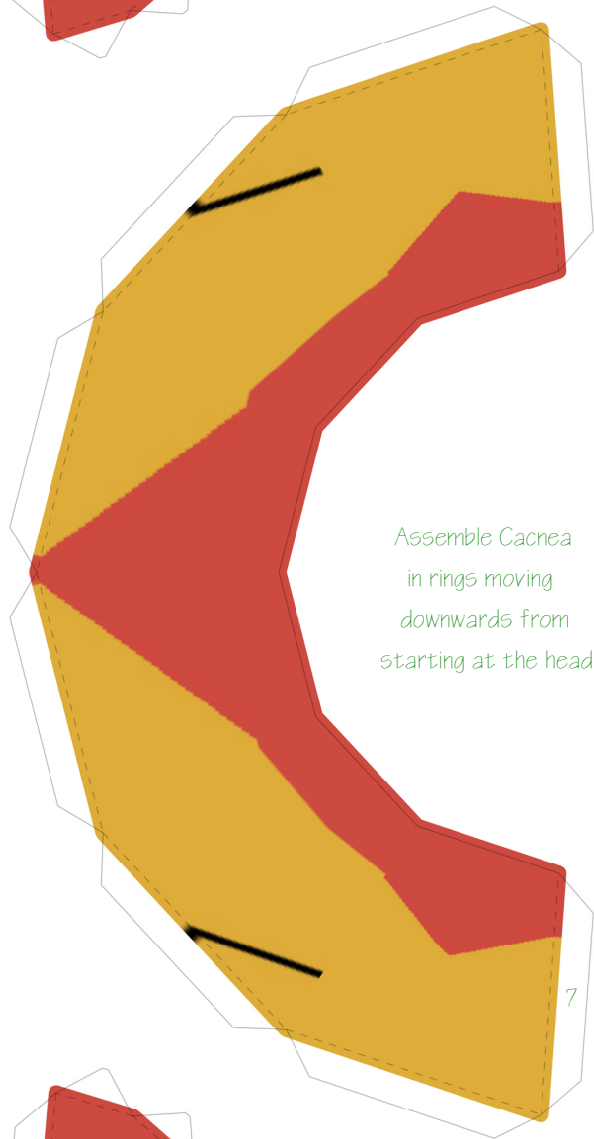
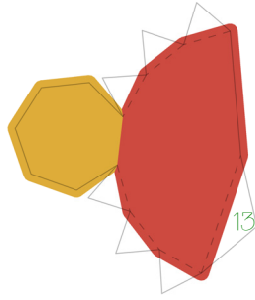
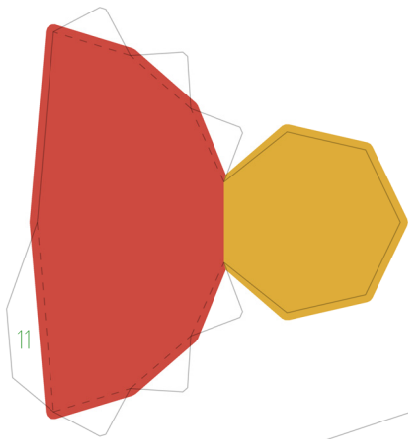


Top of Crown

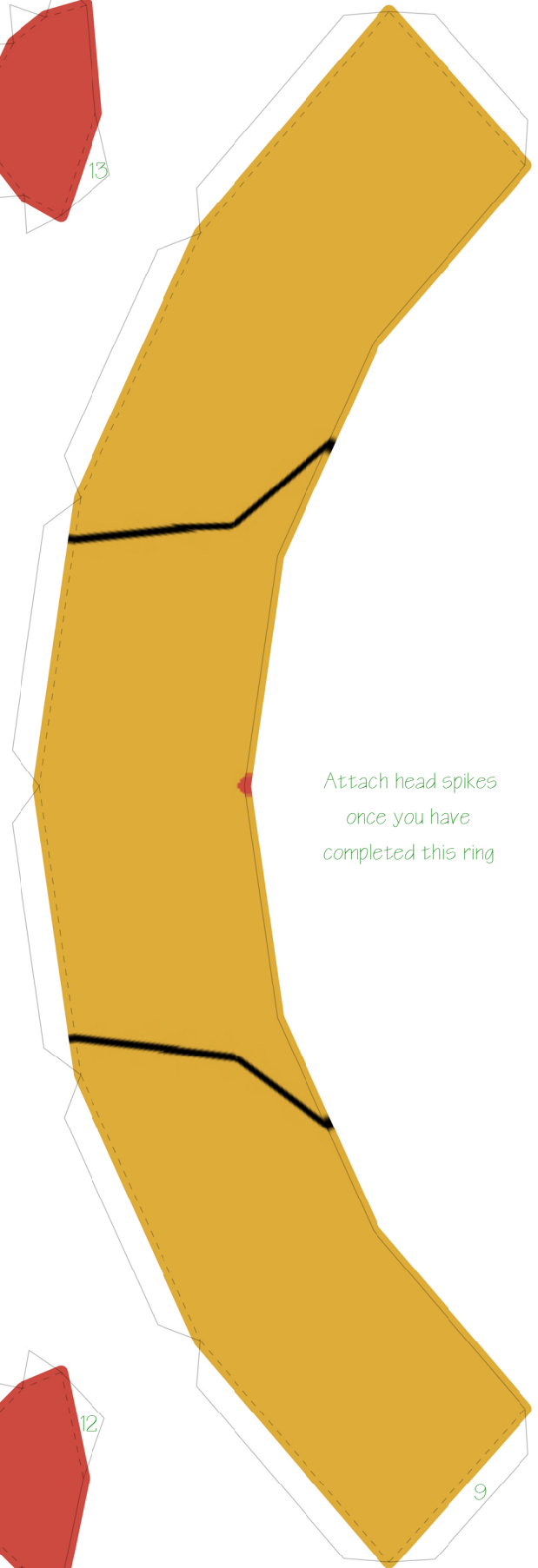
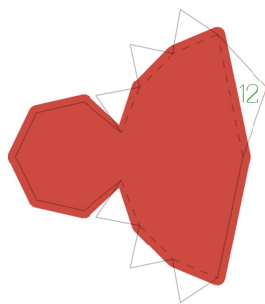
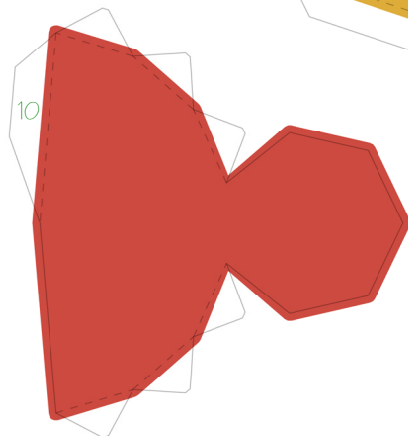


Rim of  
Crown

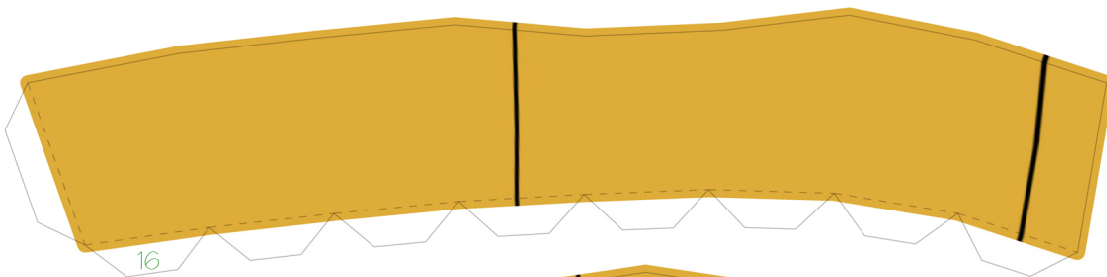
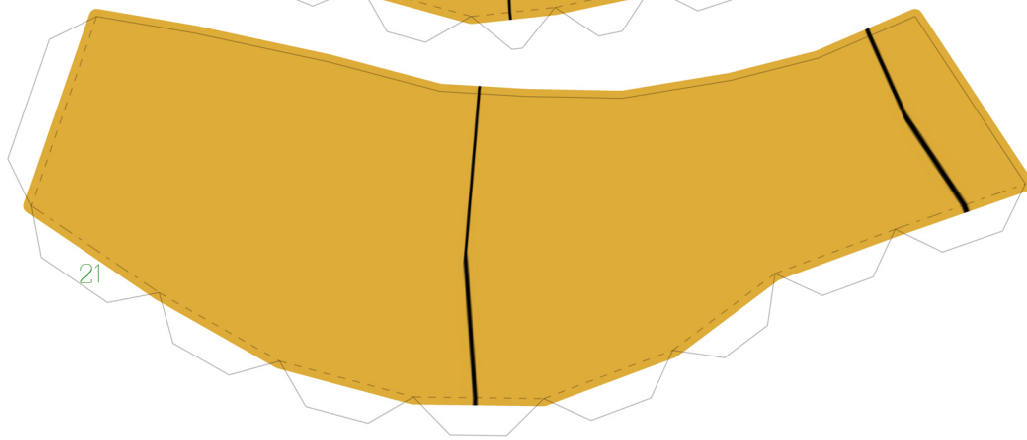
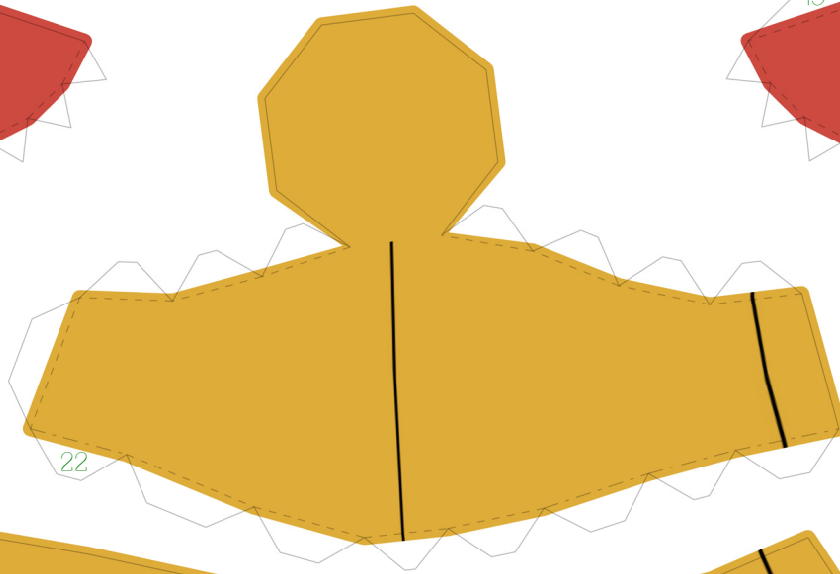
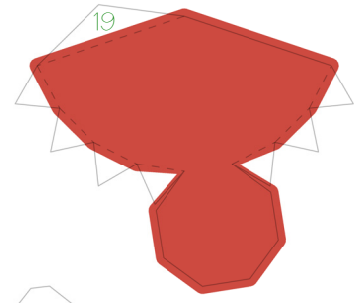
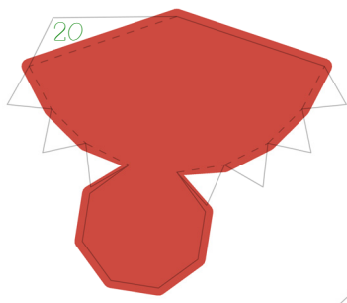
<- Join these two parts together, and then  
attach to the top of the crown tab by tab



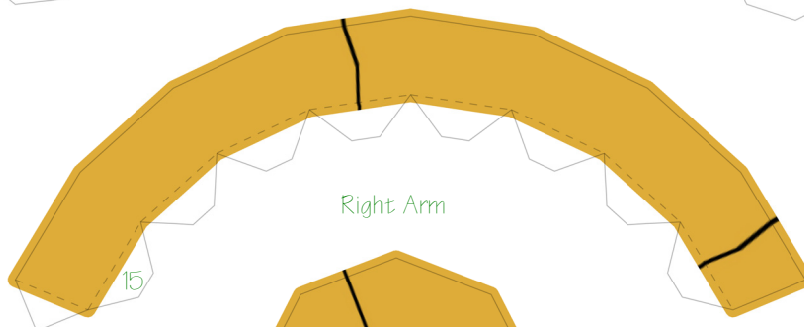
Assemble Cacnea  
in rings moving  
downwards from  
starting at the head



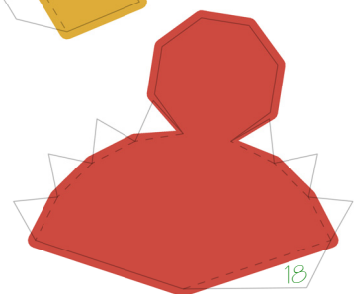
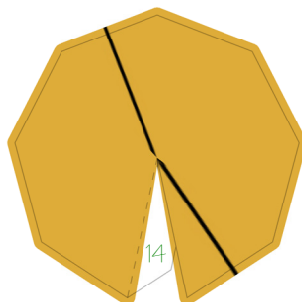
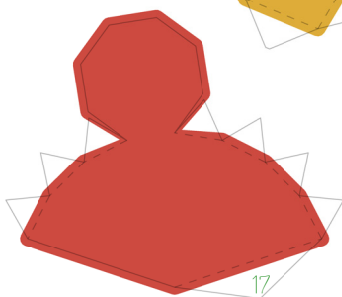
Attach head spikes  
once you have  
completed this ring

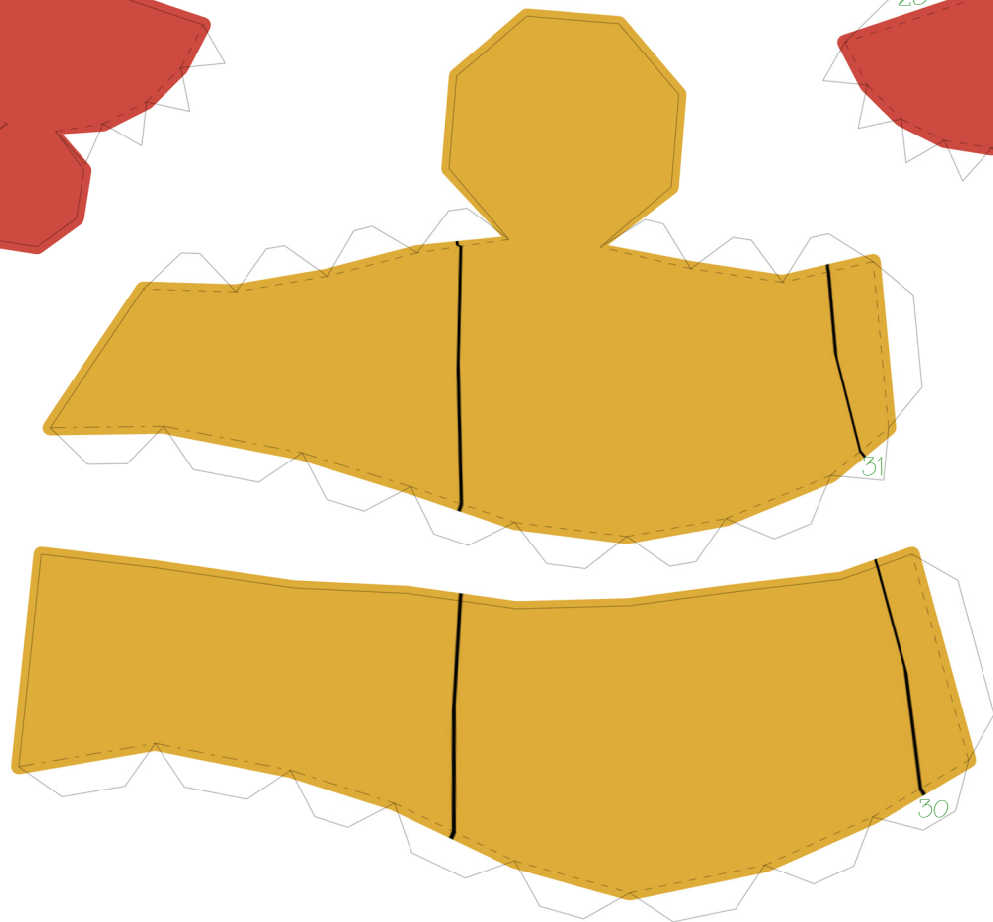
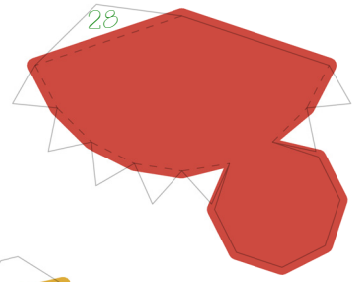
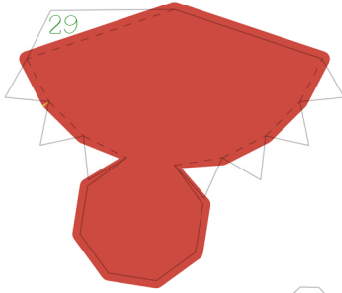


Attach spikes once  
you have  
connected this ring

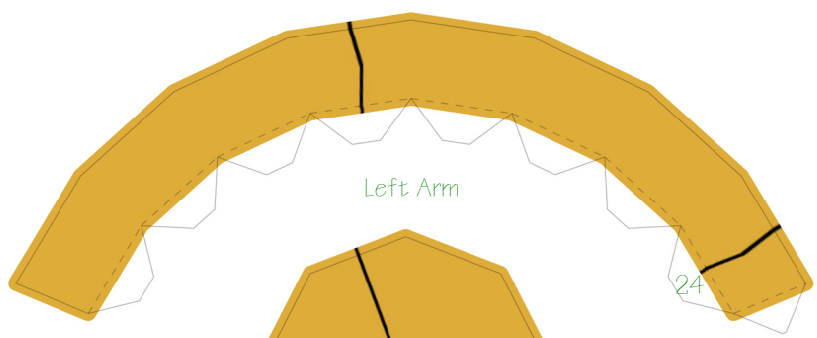
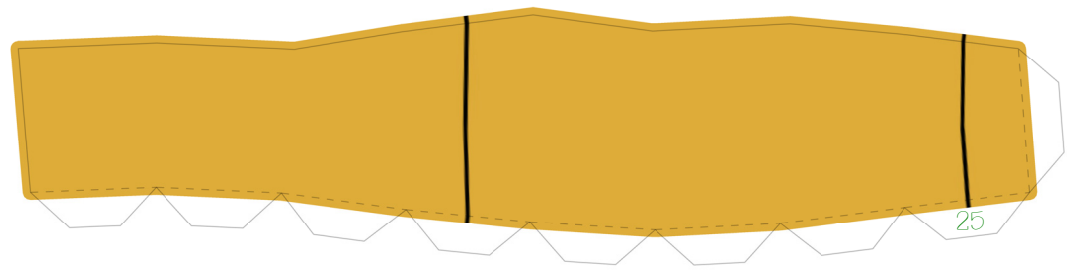


Right Arm

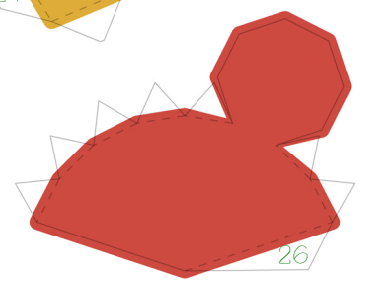
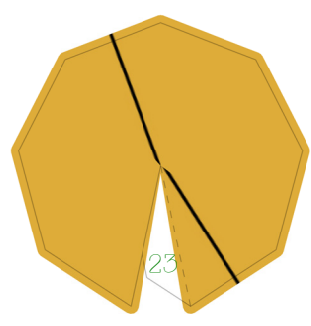
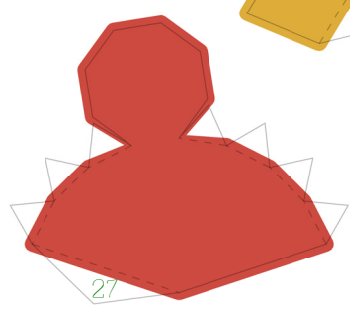


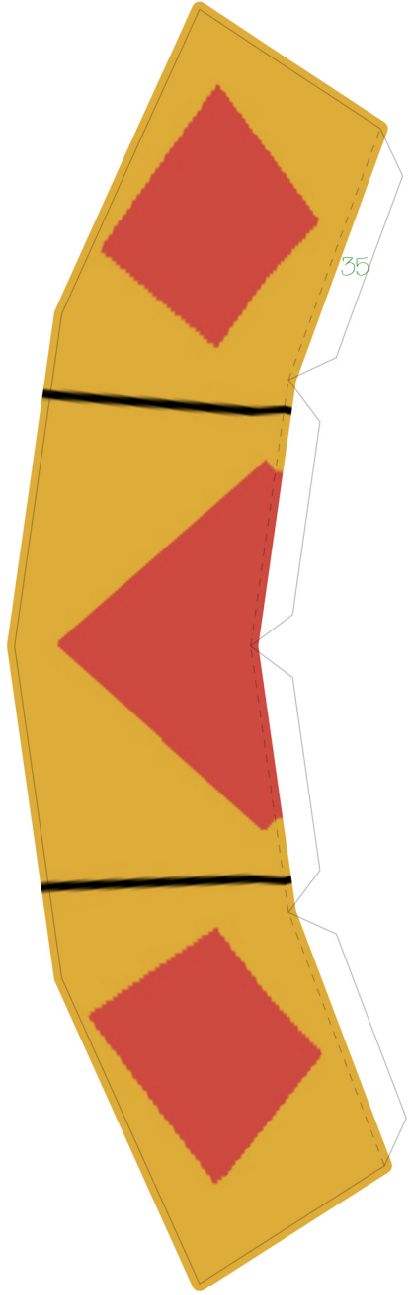
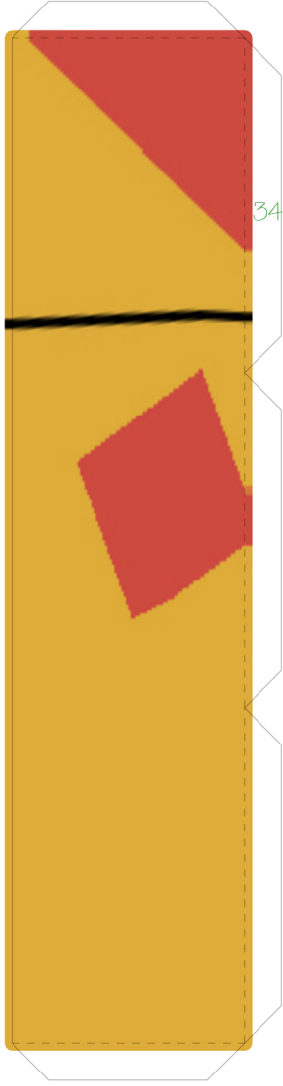
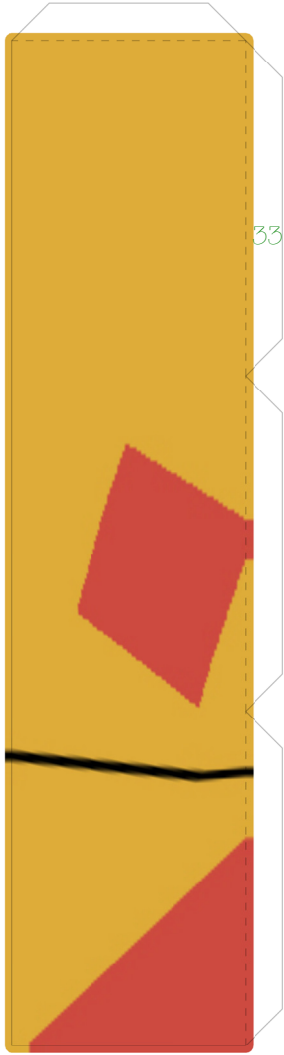
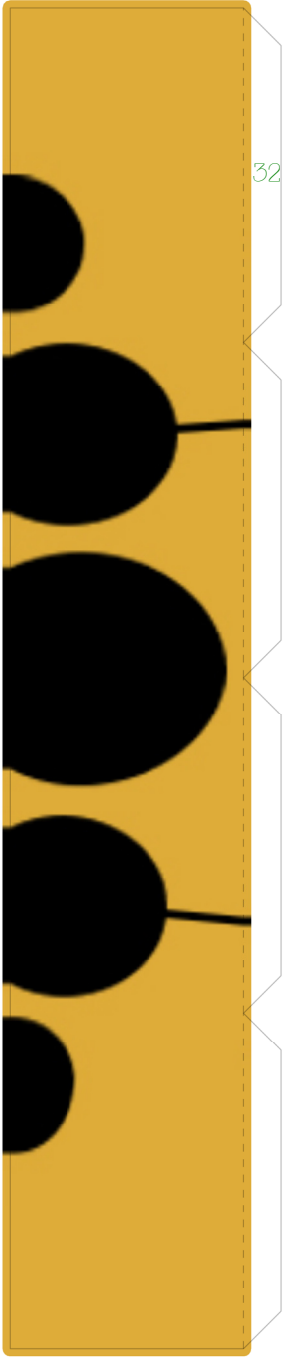


Attach spike once  
you have  
connected this ring

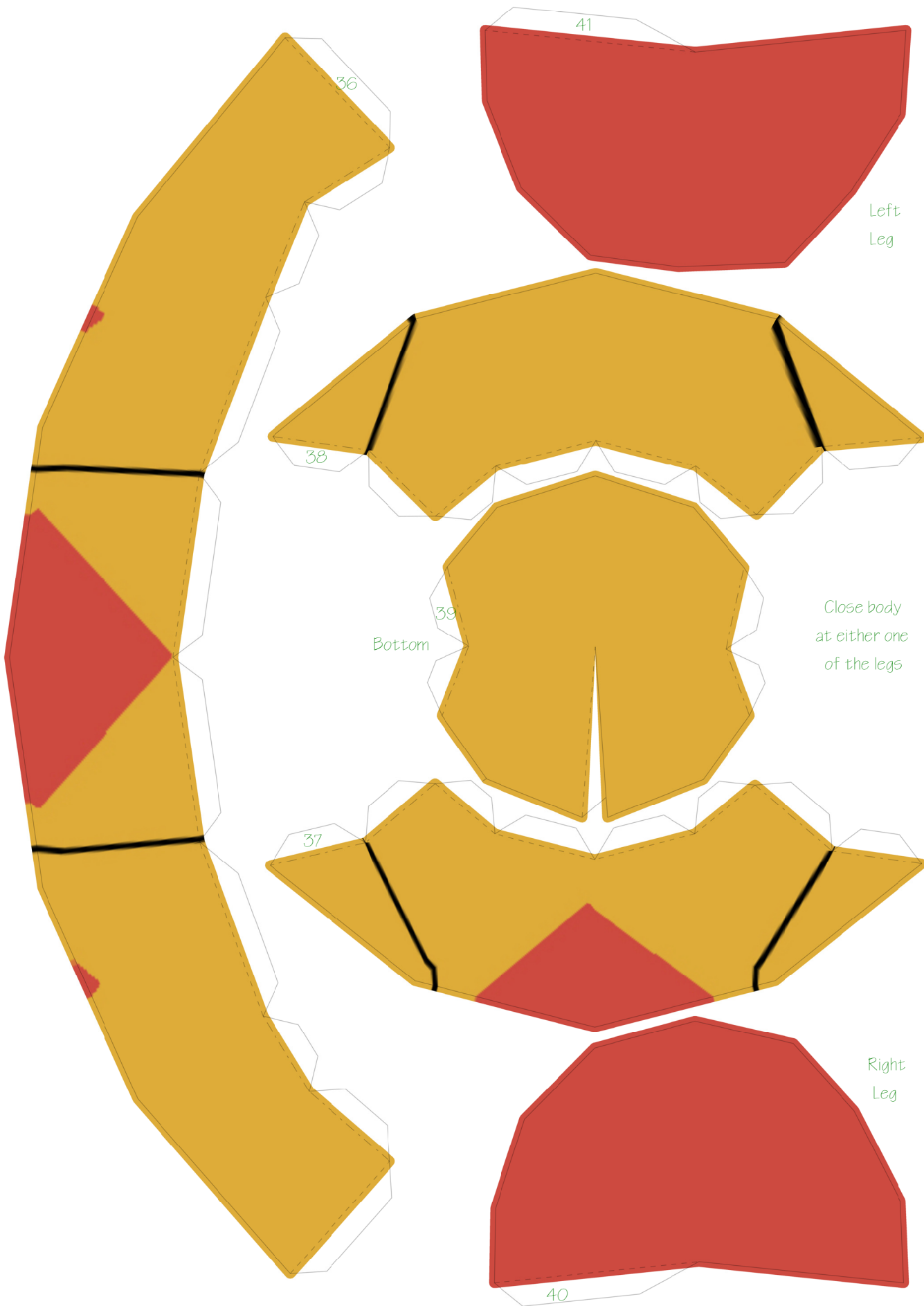


Left Arm









36

41

Left  
Leg

38

Bottom

39

Close body  
at either one  
of the legs

37

Right  
Leg

40