

Butterfree

By Brandon



Paper Pokés
paperpokes.blogspot.com

Right
Antennae

Back of Head

Left
Antennae



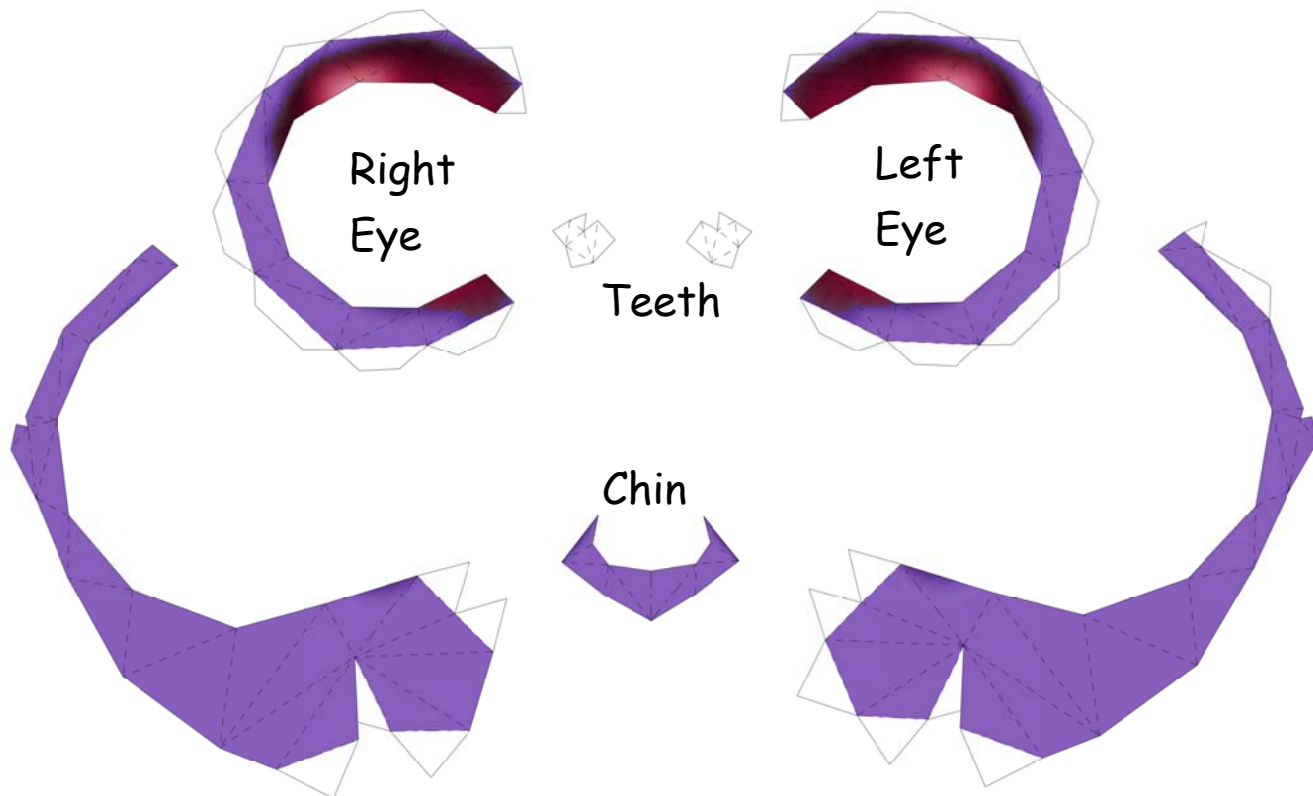
Nose

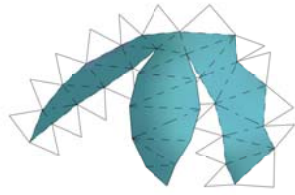
Right
Eye

Left
Eye

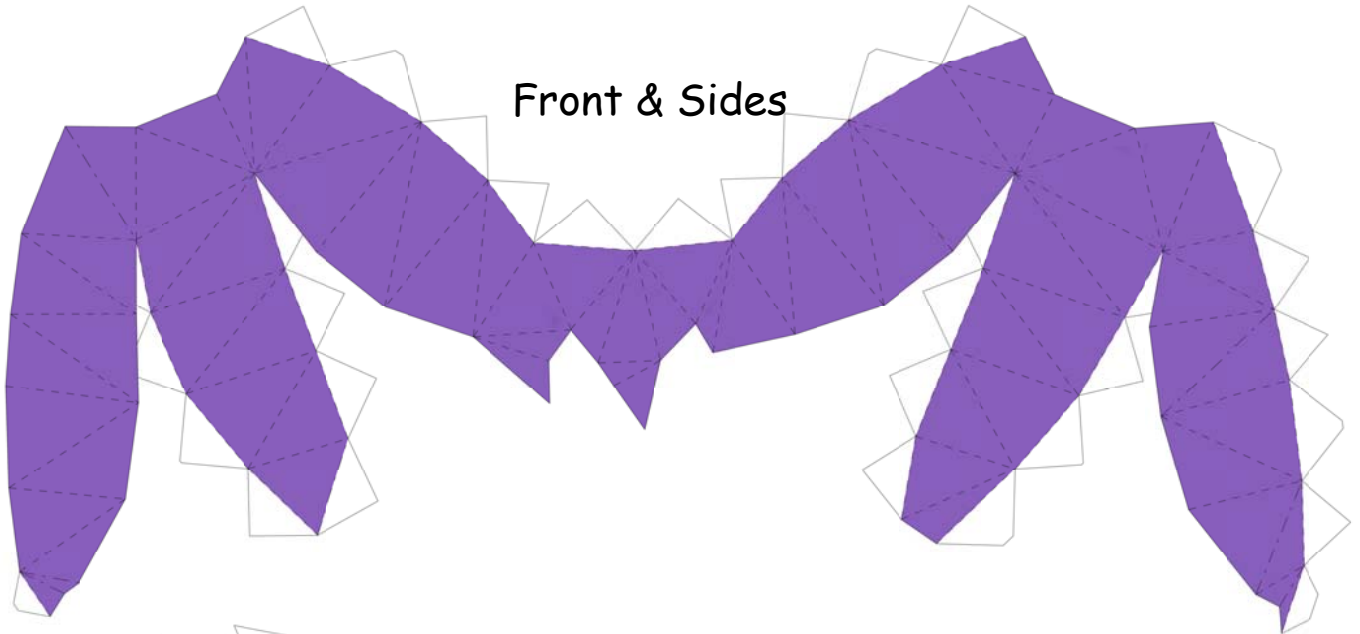
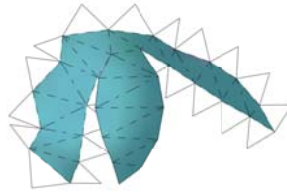
Teeth

Chin





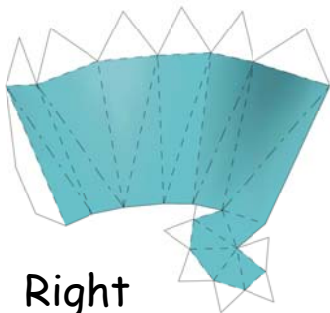
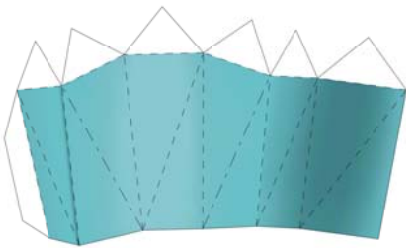
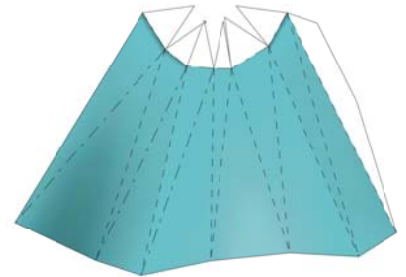
Hands



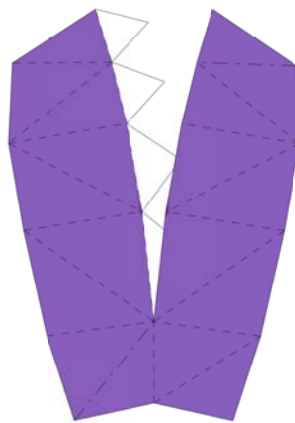
Front & Sides



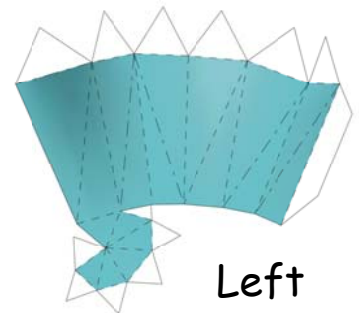
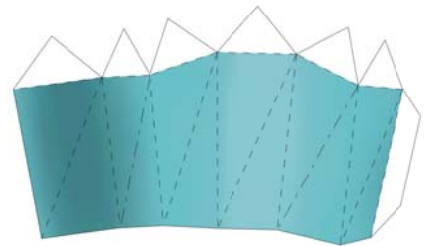
After attaching the hands and feet, close the model with the below piece last, then glue the conjoined wings onto the back.



Right Foot



Back

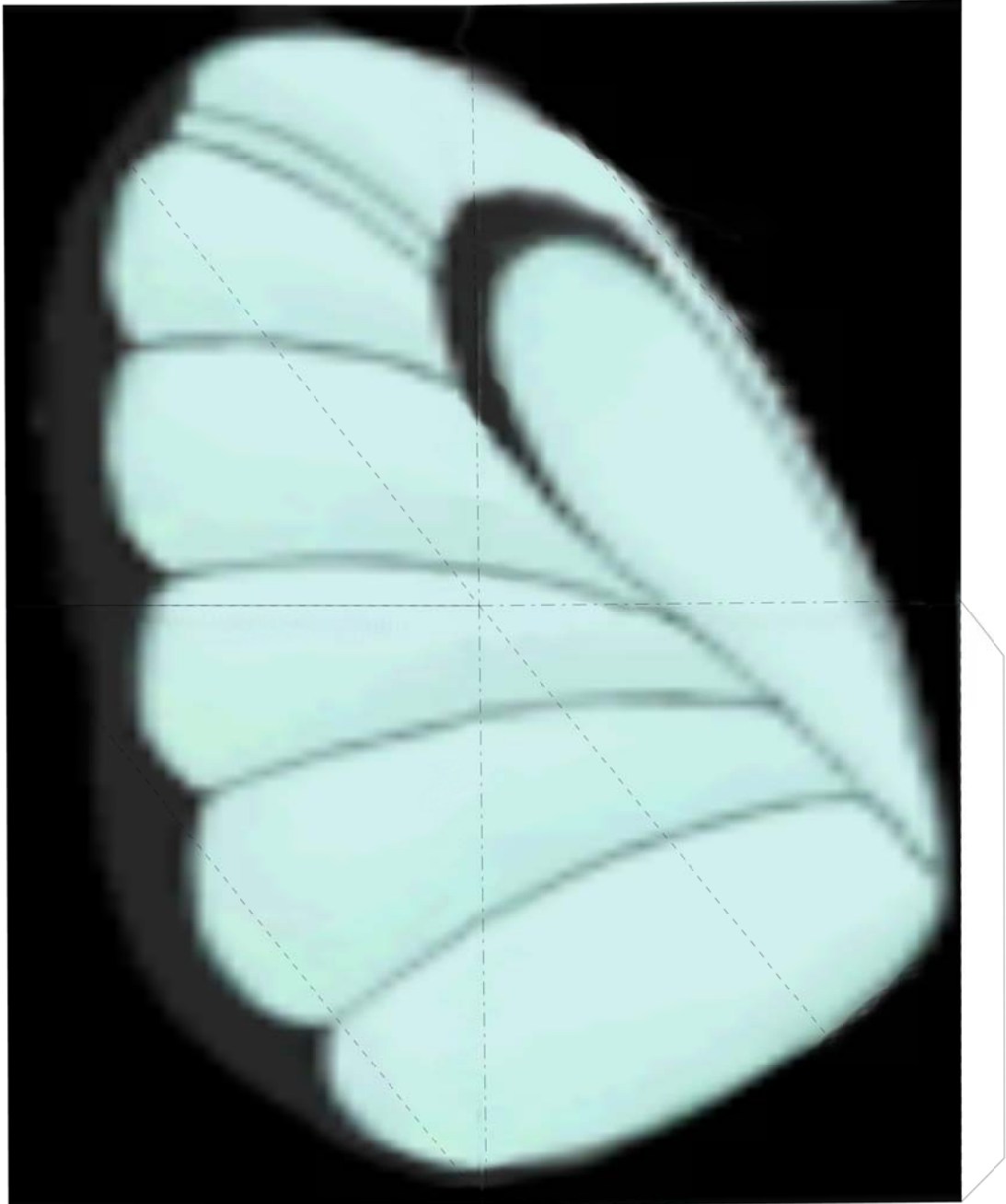


Left Foot

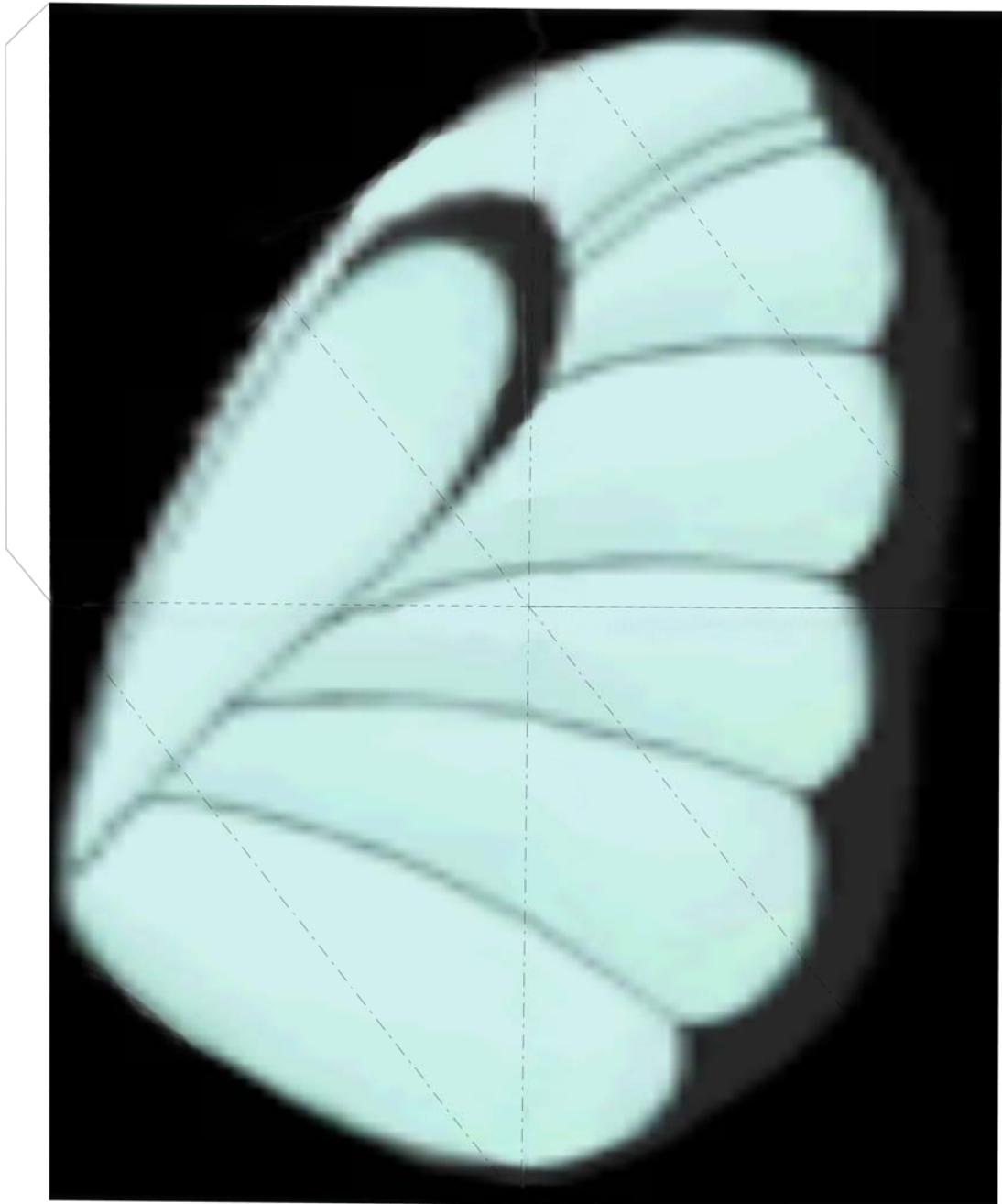
Hint:

- Print wings on standard 80gsm printer paper
- Use a "dry" glue stick for joining the mirrored sides together.

Front Side



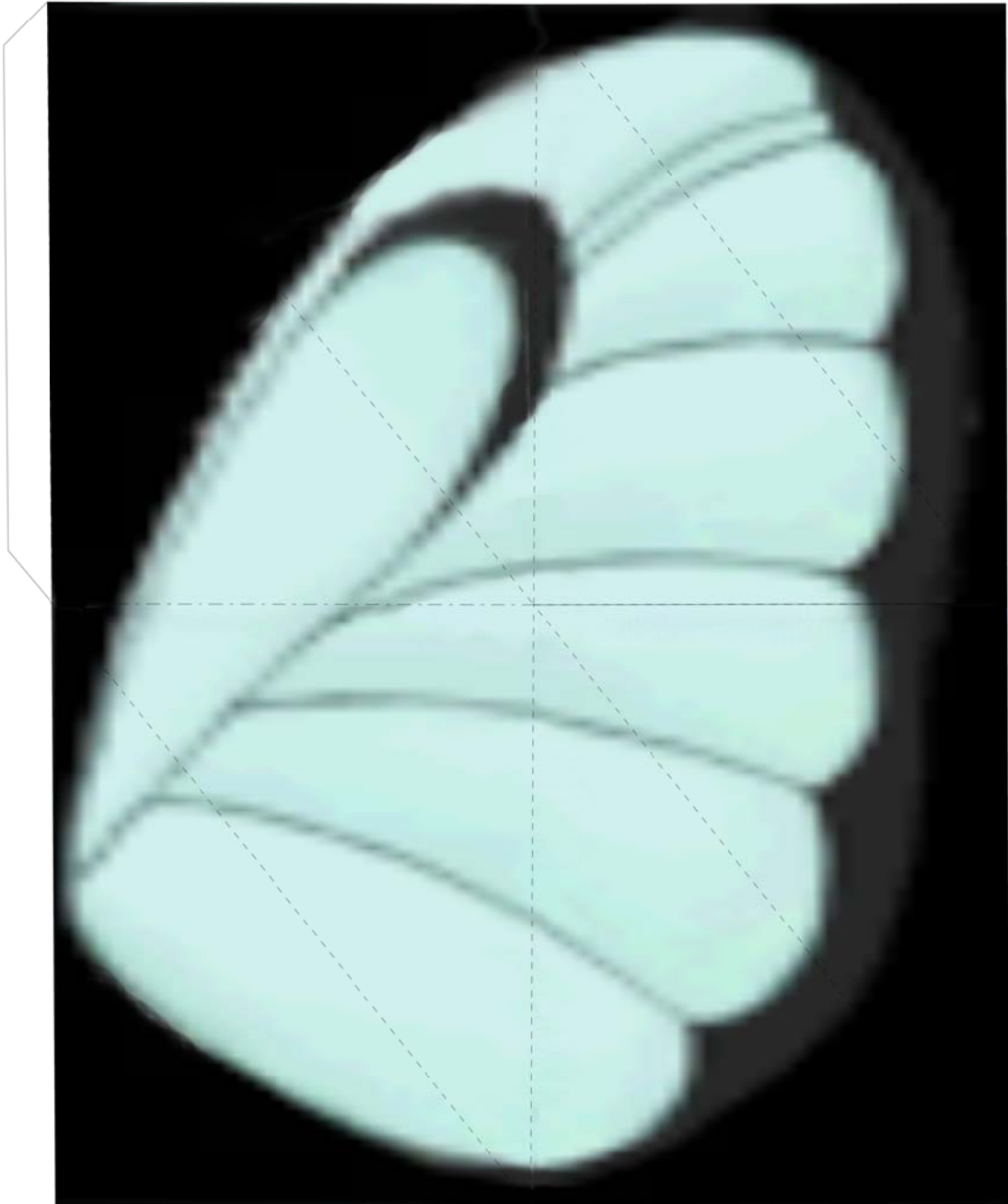
Front Side



Rear Side

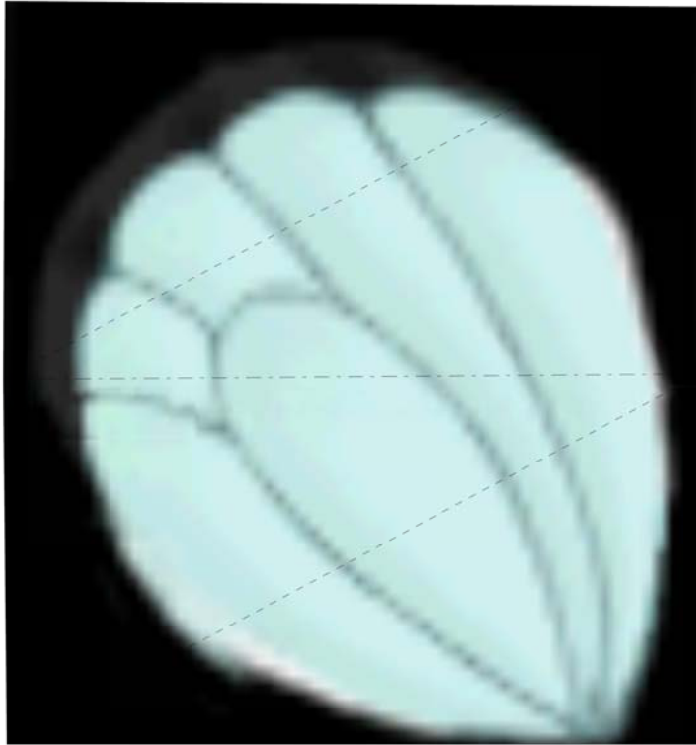


Rear Side

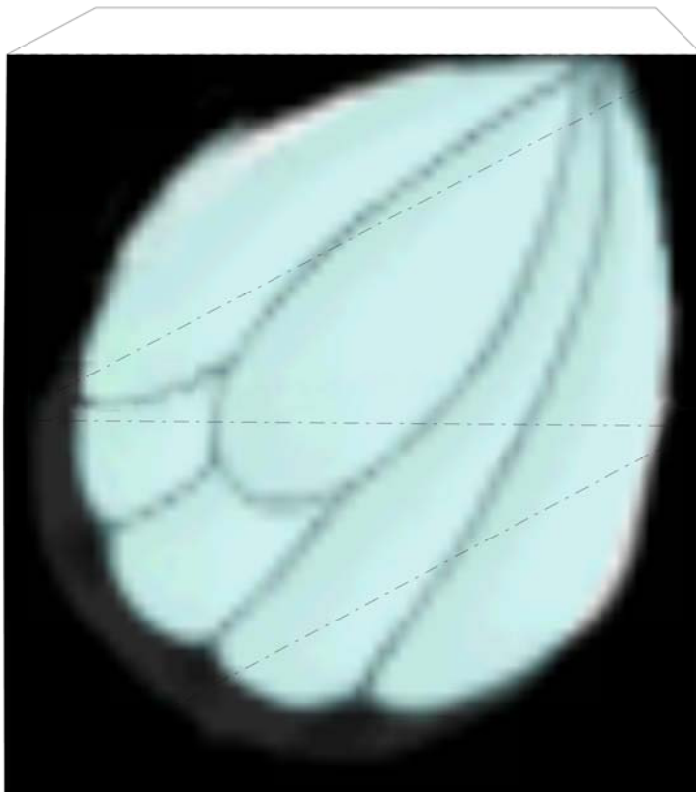


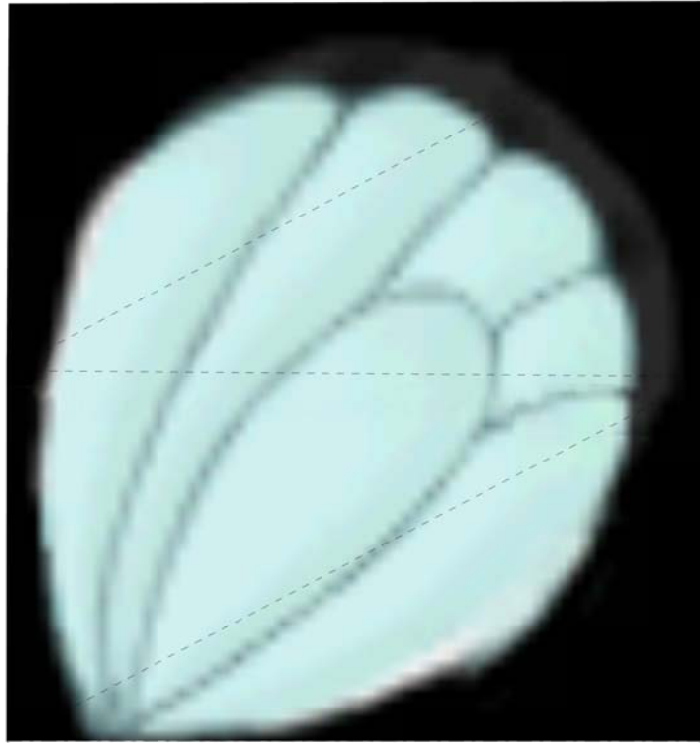
Hint:

Glue these smaller wings to the larger wings before attaching to the body.



Front Side





Rear Side

