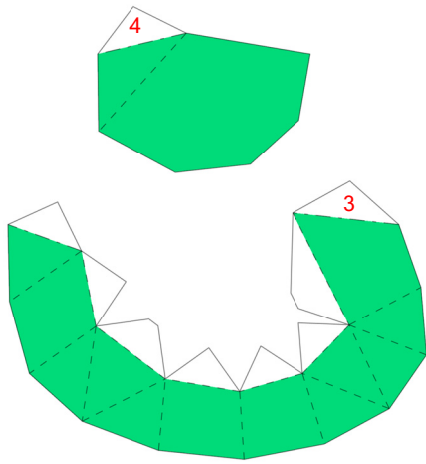


azurill

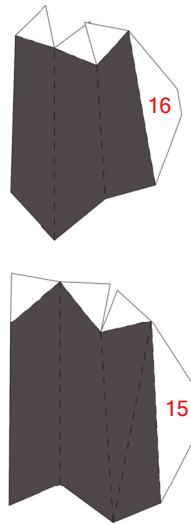
By Brandon



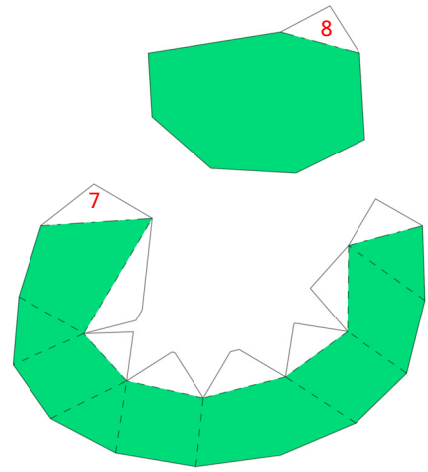
PaperPokés
www.pokemonpapercraft.com



Right Ear



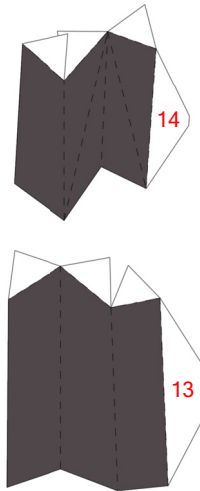
Tail



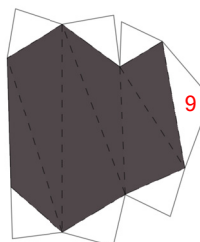
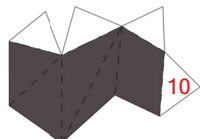
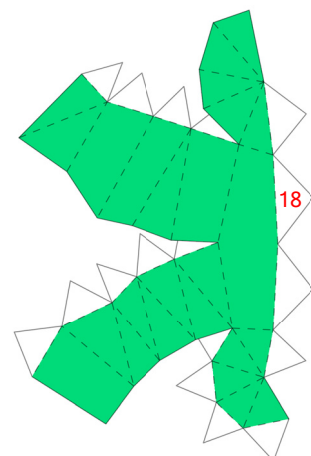
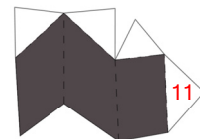
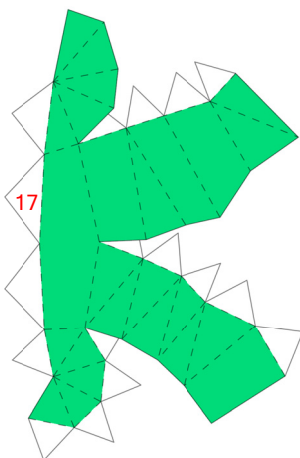
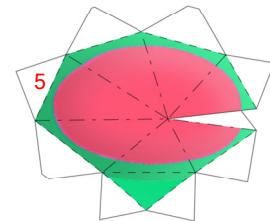
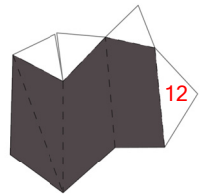
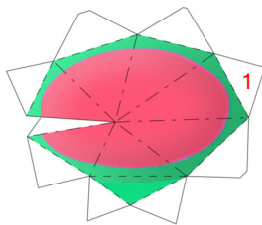
Left Ear

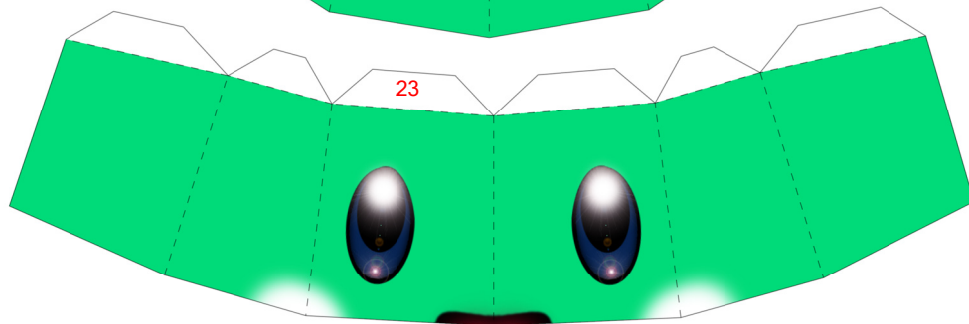
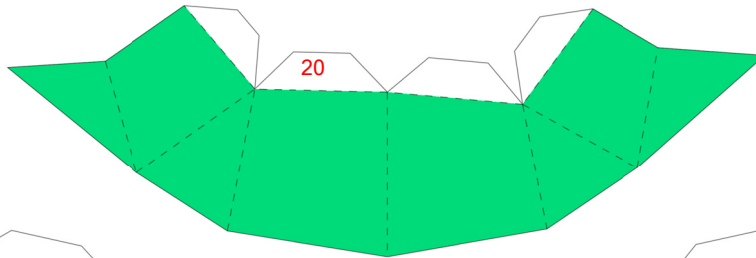
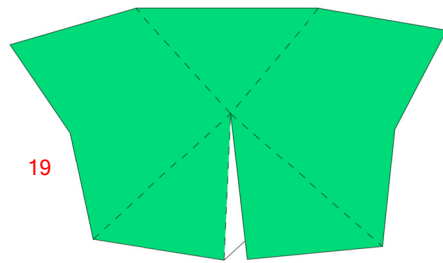


Right Foot

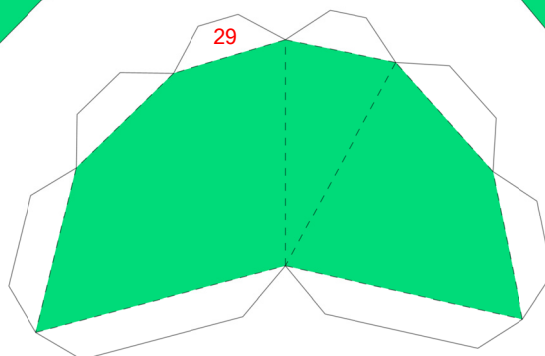
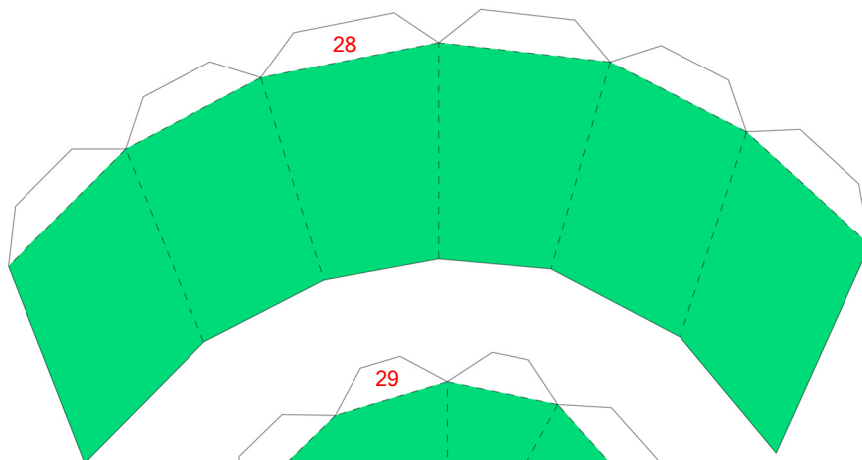
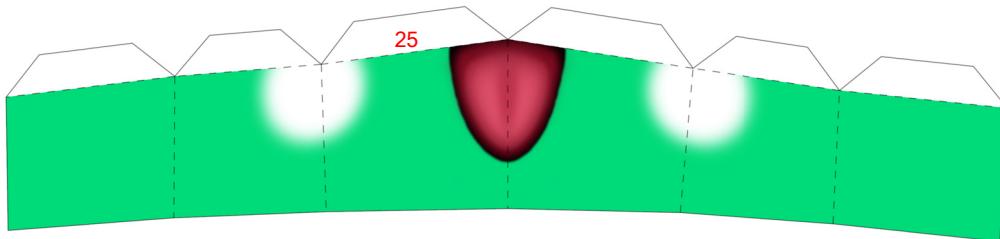


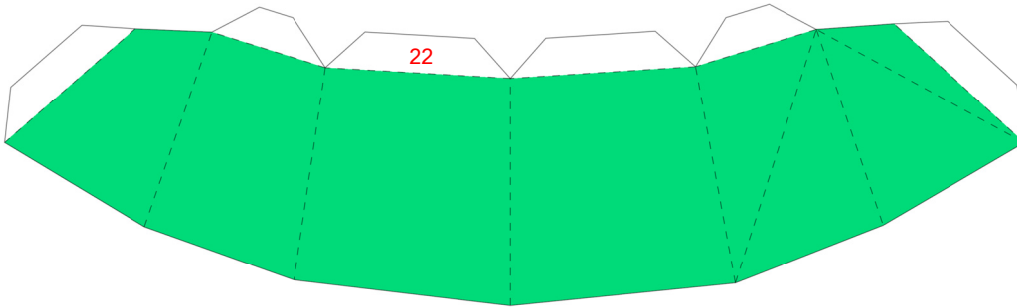
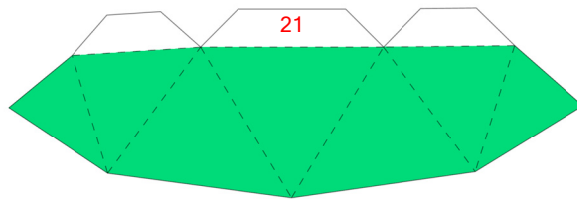
Left Foot



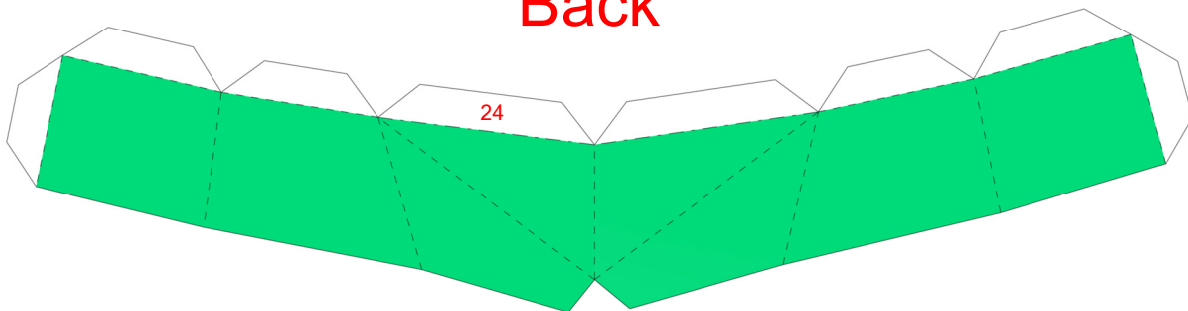


Front

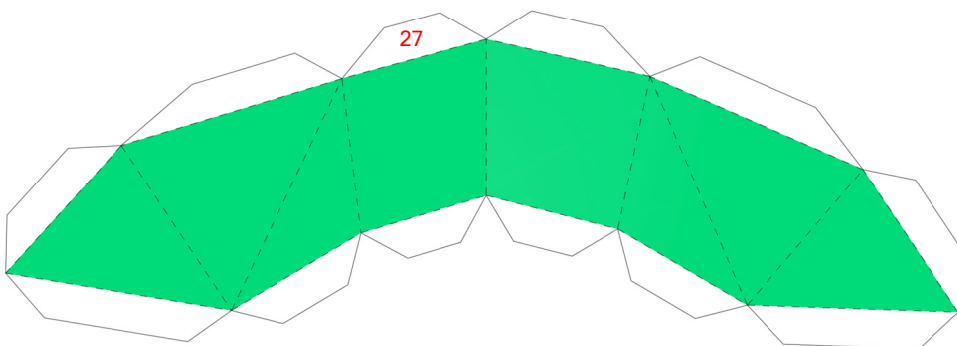
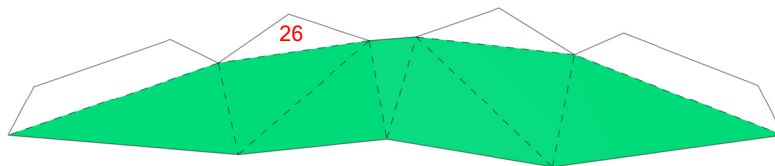




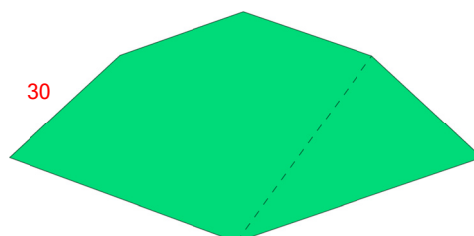
Back

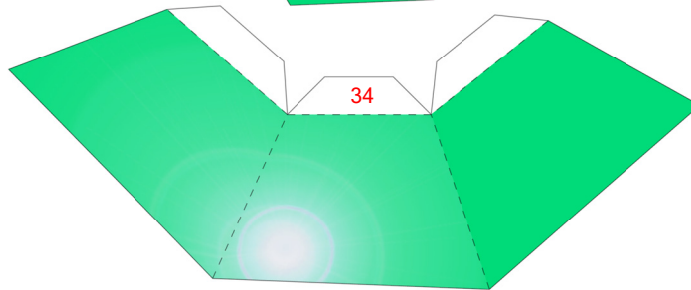
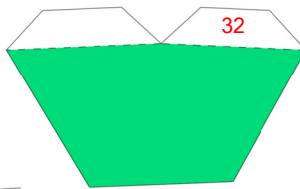
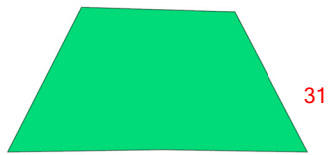


Insert and attach tail after connecting
piece no. 26 to the rest of the body

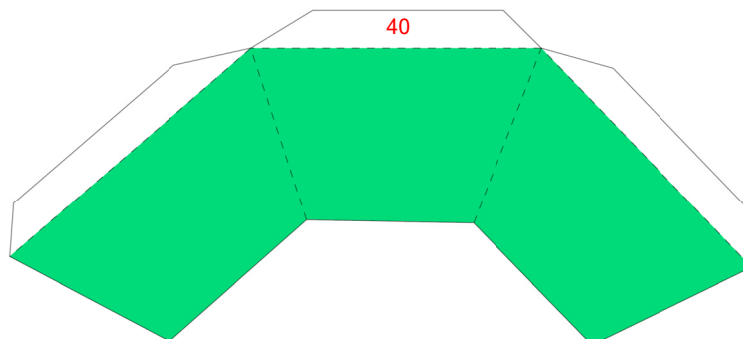
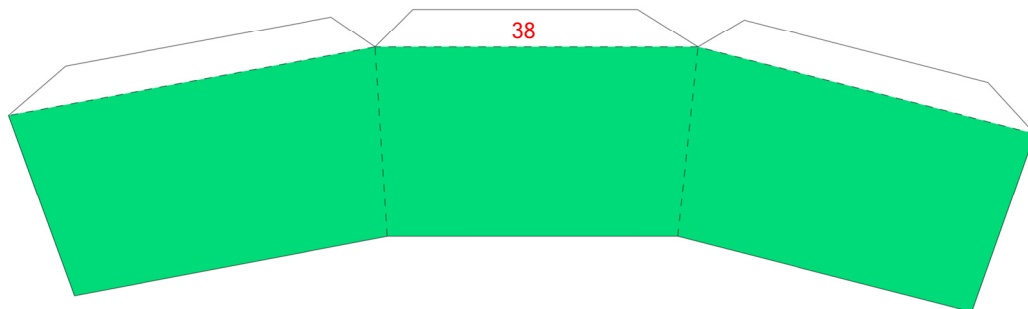
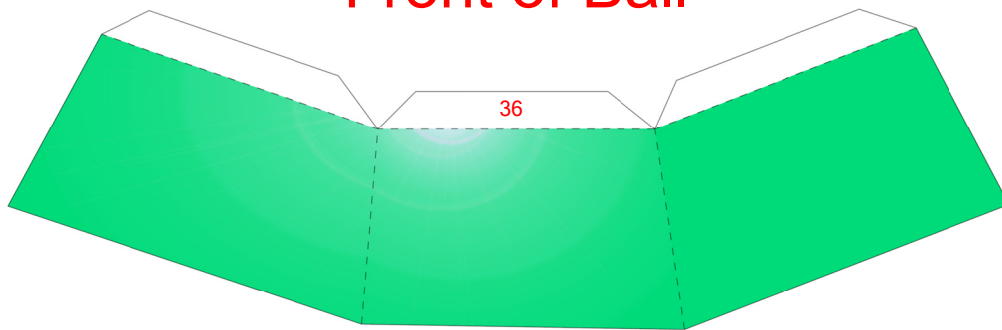


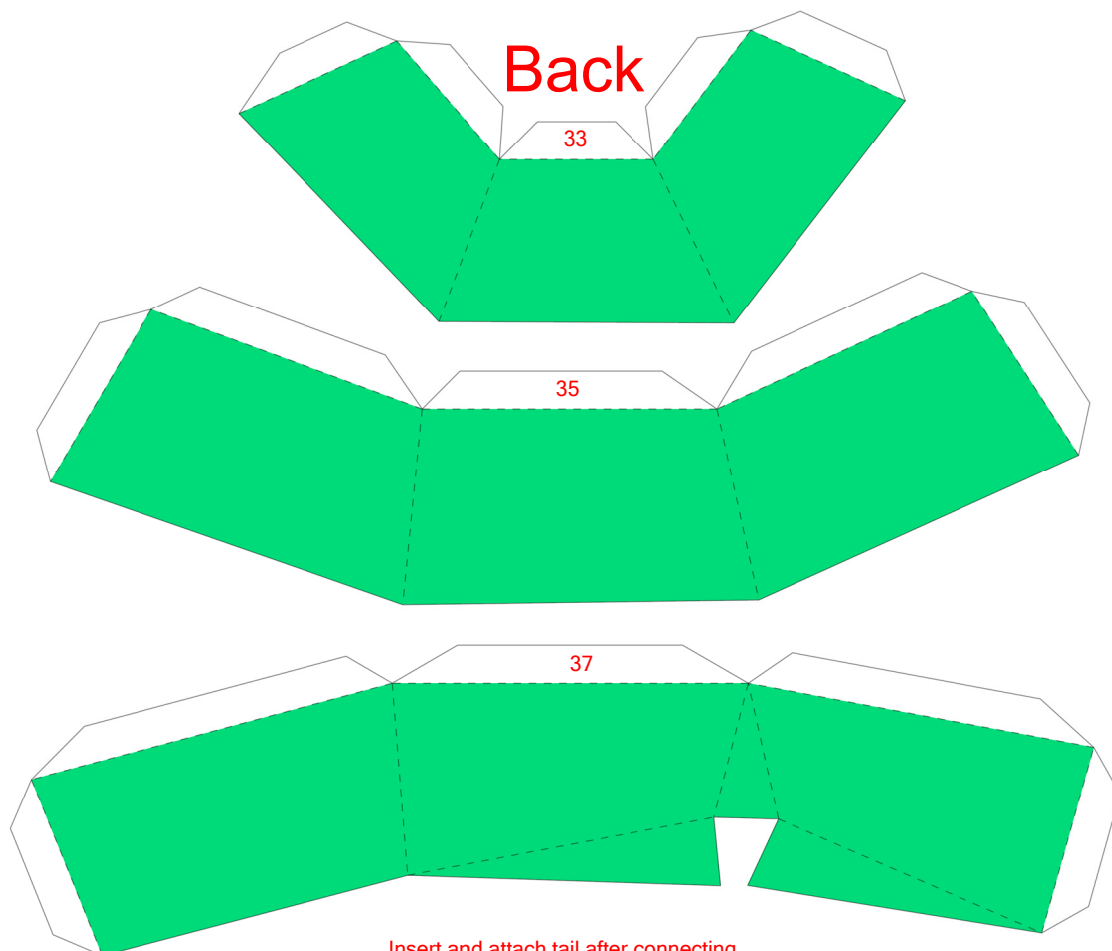
Close body here



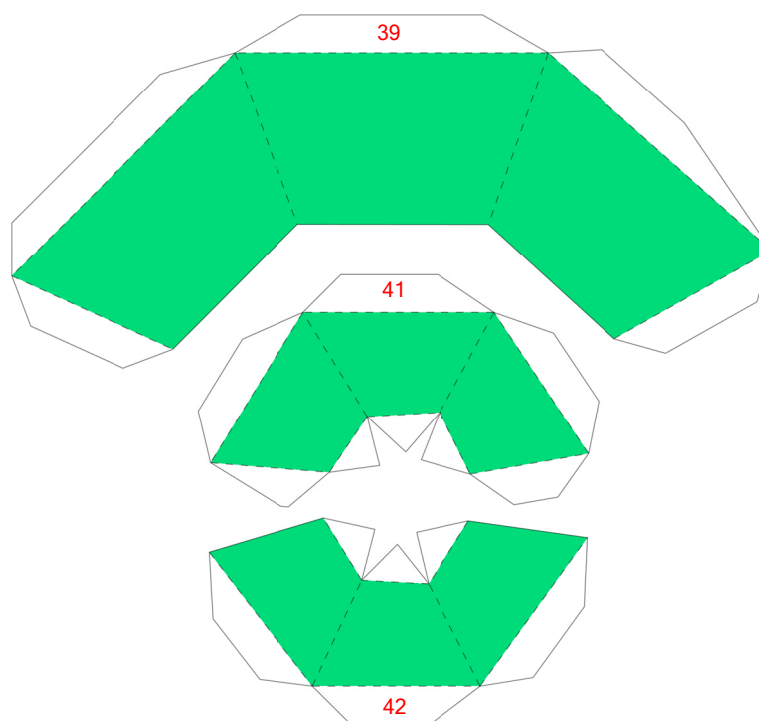


Front of Ball





Insert and attach tail after connecting
piece no. 39 to the rest of the ball



Insert counterweight
before closing the ball here

